

Anti-White spot syndrome virus VP28 antibody ab26935

3 References [画像数 1](#)

製品の概要

製品名	Anti-White spot syndrome virus VP28 antibody
製品の詳細	Rabbit polyclonal to White spot syndrome virus VP28
由来種	Rabbit
アプリケーション	適用あり: ELISA, WB
種交差性	交差種: White spot syndrome virus
免疫原	Synthetic peptide corresponding to White spot syndrome virus VP28 aa 1-150 (N terminal). Database link: Q6TFP8
特記事項	<p>The Life Science industry has been in the grips of a reproducibility crisis for a number of years. Abcam is leading the way in addressing this with our range of recombinant monoclonal antibodies and knockout edited cell lines for gold-standard validation. Please check that this product meets your needs before purchasing.</p> <p>If you have any questions, special requirements or concerns, please send us an inquiry and/or contact our Support team ahead of purchase. Recommended alternatives for this product can be found below, along with publications, customer reviews and Q&As</p>

製品の特性

製品の状態	Liquid
保存方法	Shipped at 4°C. Store at +4°C short term (1-2 weeks). Upon delivery aliquot. Store at -20°C long term. Avoid freeze / thaw cycle.
バッファー	Constituent: Whole serum
精製度	Whole antiserum
ポリ/モノ	ポリクローナル
アイソタイプ	IgG

アプリケーション

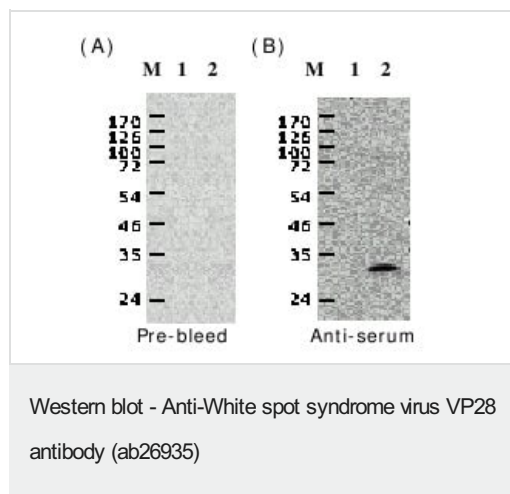
The Abpromise guarantee **Abpromise保証は、次のテスト済みアプリケーションにおけるab26935の使用に適用されます**
 アプリケーションノートには、推奨の開始希釈率がありますが、適切な希釈率につきましてはご検討ください。

アプリケーション	Abreviews	特記事項
ELISA		1/5000.
WB		1/400 - 1/1000. Detects a band of approximately 30 kDa (predicted molecular weight: 23 kDa). Use at 1/400 for tissue extracts/cell lysates, and at 1/1000 for recombinant protein.

ターゲット情報

関連性 White spot syndrome virus (WSSV) occurs worldwide and causes high mortality and considerable economic damage to the shrimp farming industry. The VP28 was one of the envelope proteins of WSSV. Almost all shrimps infected with WSSV in ponds die within 3 to 4 days after the first dead shrimp was observed with gross lesions ranging from abnormal red body discoloration to white spots in the cuticle.

画像



All lanes : Anti-White spot syndrome virus VP28 antibody (ab26935) at 1/1000 dilution

Lane 1 : Lane (A M1) Control: E.Coli total cell lysate before IPTG induction, Pre bleed

Lane 2 : Lane (A M2) Recombinant VP28 protein expression after IPTG induction, Pre Bleed

Lane 3 : Lane (B M1) Control: E.Coli total cell lysate before IPTG induction, Post immunization.

Lane 4 : Lane (B M2) Recombinant VP28 protein expression after IPTG induction, Post immunization.

Secondary

All lanes : anti rabbit IgG HRP conjugate

Predicted band size: 23 kDa

Observed band size: 30 kDa

Please note: All products are "FOR RESEARCH USE ONLY. NOT FOR USE IN DIAGNOSTIC PROCEDURES"

Our Abpromise to you: Quality guaranteed and expert technical support

- Replacement or refund for products not performing as stated on the datasheet

- Valid for 12 months from date of delivery
- Response to your inquiry within 24 hours
- We provide support in Chinese, English, French, German, Japanese and Spanish
- Extensive multi-media technical resources to help you
- We investigate all quality concerns to ensure our products perform to the highest standards

If the product does not perform as described on this datasheet, we will offer a refund or replacement. For full details of the Abpromise, please visit <https://www.abcam.co.jp/abpromise> or contact our technical team.

Terms and conditions

- Guarantee only valid for products bought direct from Abcam or one of our authorized distributors