

# Anti-WHAMM antibody ab122572

**2 References** [画像数 5](#)

### 製品の概要

---

製品名	Anti-WHAMM antibody
製品の詳細	Rabbit polyclonal to WHAMM
由来種	Rabbit
アプリケーション	<b>適用あり:</b> IHC-P, WB, ICC
種交差性	<b>交差種:</b> Human
免疫原	antigen sequence: RALSSSSQAA THQNLGFRAP VKDDQPRPLV CESP AERPRD SLESFSCPGS MDEVLASLRH GRAPLRKVEV PAVRPPHASI NEHILAAIR, corresponding to internal sequence amino acids 660-748 of Human WHAMM. <a href="#">Run BLAST with ExpASY</a> <a href="#">Run BLAST with NCBI</a>
ポジティブ・コントロール	IHC-P: Human endometrium, placenta, and lymph node tissues; ICC: A431 cells; WB: U-138 MG cell lysate.
特記事項	<p>The Life Science industry has been in the grips of a reproducibility crisis for a number of years. Abcam is leading the way in addressing this with our range of recombinant monoclonal antibodies and knockout edited cell lines for gold-standard validation. Please check that this product meets your needs before purchasing.</p> <p>If you have any questions, special requirements or concerns, please send us an inquiry and/or contact our Support team ahead of purchase. Recommended alternatives for this product can be found below, along with publications, customer reviews and Q&amp;As</p>

### 製品の特性

---

製品の状態	Liquid
保存方法	Shipped at 4°C. Store at -20°C or -80°C. Avoid freeze / thaw cycle. Store undiluted.
バッファー	pH: 7.20 Preservative: 0.02% Sodium azide Constituents: 59% PBS, 40% Glycerol (glycerin, glycerine)
精製度	Immunogen affinity purified
ポリ/モノ	ポリクローナル
アイソタイプ	IgG

## アプリケーション

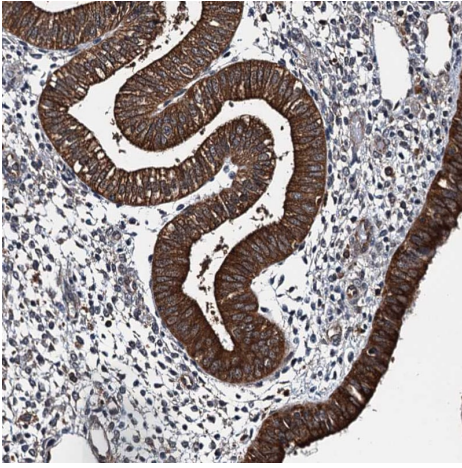
The Abpromise guarantee **Abpromise保証は、次のテスト済みアプリケーションにおけるab122572の使用に適用されます**  
アプリケーションノートには、推奨の開始希釈率がありますが、適切な希釈率につきましてはご検討ください。

アプリケーション	Abreviews	特記事項
IHC-P		1/200 - 1/500. Perform heat mediated antigen retrieval with citrate buffer pH 6 before commencing with IHC staining protocol.
WB		Use a concentration of 0.04 - 0.4 µg/ml.
ICC		Use a concentration of 0.25 - 2 µg/ml.

## ターゲット情報

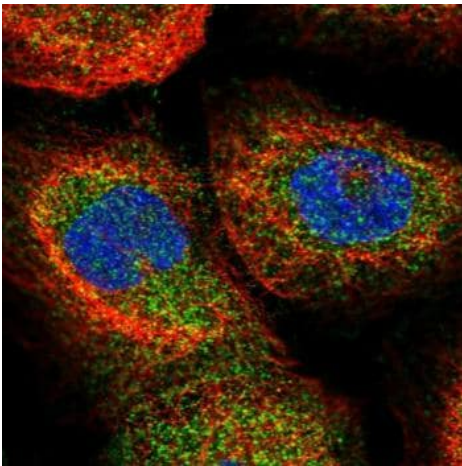
機能	Acts as a nucleation-promoting factor (NPF) that stimulates Arp2/3-mediated actin polymerization both at the Golgi apparatus and along tubular membranes. Involved as a regulator of Golgi positioning and morphology. Participates in vesicle transport between the reticulum endoplasmic and the Golgi complex.
組織特異性	Expressed in brain, lung, heart, colon and kidney (at protein level).
配列類似性	Contains 2 WH2 domains.
ドメイン	The N-terminal region associates with membranes, the coiled-coil region binds to microtubules and the WH2 domains promotes actin nucleation.
細胞内局在	Cytoplasm. Endoplasmic reticulum-Golgi intermediate compartment. Cytoplasmic vesicle membrane. Golgi apparatus > cis-Golgi network. Localized to a perinuclear compartment near the microtubule-organizing center (MTOC). Also detected on tubulo-vesicular structures in the cell periphery that frequently localized along microtubules.

## 画像



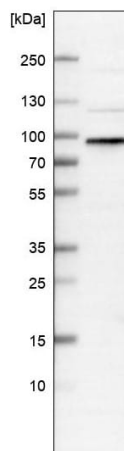
Immunohistochemistry (Formalin/PFA-fixed paraffin-embedded sections) - Anti-WHAMM antibody (ab122572)

Immunohistochemistry (Formalin/PFA-fixed paraffin-embedded sections) analysis of human endometrium tissue labelling WHAMM with ab122572 at 1/200 dilution. Heat mediated antigen retrieval performed with citrate buffer pH 6 before commencing with IHC staining protocol.



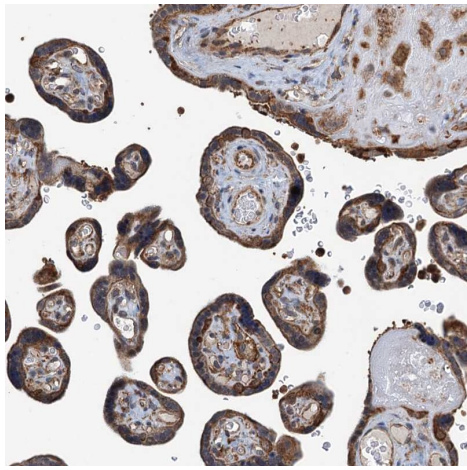
Immunocytochemistry - Anti-WHAMM antibody (ab122572)

ab122572, at 4  $\mu\text{g/ml}$ , staining WHAMM in PFA/Triton X-100 fixed/permeabilized A431 cells by Immunofluorescence (green).



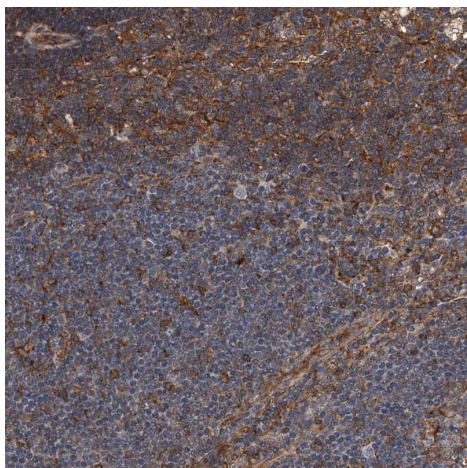
Western blot - Anti-WHAMM antibody (ab122572)

Anti-WHAMM antibody (ab122572) at 0.4  $\mu\text{g/ml}$  + U-138 MG (human brain glioblastoma cell line) cell lysate



Immunohistochemistry (Formalin/PFA-fixed paraffin-embedded sections) - Anti-WHAMM antibody (ab122572)

Immunohistochemistry (Formalin/PFA-fixed paraffin-embedded sections) analysis of human placenta tissue labelling WHAMM with ab122572 at 1/200 dilution. Heat mediated antigen retrieval performed with citrate buffer pH 6 before commencing with IHC staining protocol.



Immunohistochemistry (Formalin/PFA-fixed paraffin-embedded sections) - Anti-WHAMM antibody (ab122572)

Immunohistochemistry (Formalin/PFA-fixed paraffin-embedded sections) analysis of human lymph node tissue labelling WHAMM with ab122572 at 1/200 dilution. Heat mediated antigen retrieval performed with citrate buffer pH 6 before commencing with IHC staining protocol.

**Please note:** All products are "FOR RESEARCH USE ONLY. NOT FOR USE IN DIAGNOSTIC PROCEDURES"

### Our Abpromise to you: Quality guaranteed and expert technical support

---

- Replacement or refund for products not performing as stated on the datasheet
- Valid for 12 months from date of delivery
- Response to your inquiry within 24 hours
- We provide support in Chinese, English, French, German, Japanese and Spanish
- Extensive multi-media technical resources to help you
- We investigate all quality concerns to ensure our products perform to the highest standards

If the product does not perform as described on this datasheet, we will offer a refund or replacement. For full details of the Abpromise,

please visit <https://www.abcam.co.jp/abpromise> or contact our technical team.

## **Terms and conditions**

---

- Guarantee only valid for products bought direct from Abcam or one of our authorized distributors