

Anti-WDR5 antibody [2C2] ab56919

★★★★★ **2 Abreviews** **33 References** 画像数 4

製品の概要

製品名	Anti-WDR5 antibody [2C2]
製品の詳細	Mouse monoclonal [2C2] to WDR5
由来種	Mouse
アプリケーション	適用あり: WB, ICC/IF, ChIP, Flow Cyt
種交差性	交差種: Human
免疫原	Recombinant fragment, corresponding to amino acids 16-121 of Human WDR5
特記事項	<p>This product was changed from ascites to tissue culture supernatant on 24/1/19. Please note that the dilutions may need to be adjusted accordingly. If you have any questions, please do not hesitate to contact our scientific support team.</p> <p>The Life Science industry has been in the grips of a reproducibility crisis for a number of years. Abcam is leading the way in addressing this with our range of recombinant monoclonal antibodies and knockout edited cell lines for gold-standard validation. Please check that this product meets your needs before purchasing.</p> <p>If you have any questions, special requirements or concerns, please send us an inquiry and/or contact our Support team ahead of purchase. Recommended alternatives for this product can be found below, along with publications, customer reviews and Q&As</p>

製品の特性

製品の状態	Liquid
保存方法	Shipped at 4°C. Store at +4°C short term (1-2 weeks). Upon delivery aliquot. Store at -20°C or -80°C. Avoid freeze / thaw cycle.
バッファー	pH: 7.4
精製度	Tissue culture supernatant
特記事項(精製)	Purified from TCS.
ポリ/モノ	モノクローナル
クローン名	2C2
アイソタイプ	IgG2b
軽鎖の種類	kappa

アプリケーション

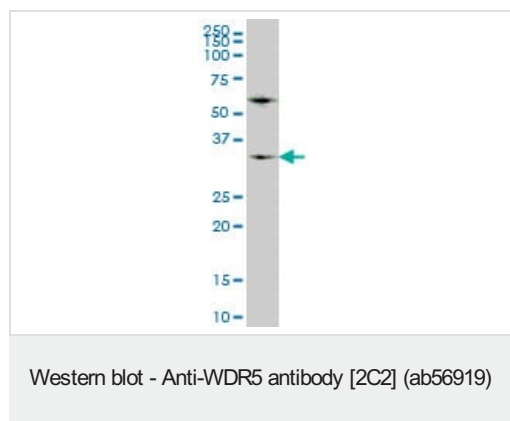
The Abpromise guarantee Abpromise保証は、次のテスト済みアプリケーションにおけるab56919の使用に適用されます
アプリケーションノートには、推奨の開始希釈率がありますが、適切な希釈率につきましてはご確認ください。

アプリケーション	Abreviews	特記事項
WB	★★★★★ (1)	Use at an assay dependent concentration. Predicted molecular weight: 36 kDa.
ICC/IF		Use at an assay dependent concentration.
ChIP		Use at an assay dependent concentration. PubMed: 20864036
Flow Cyt		Use at an assay dependent concentration. ab170192 - Mouse monoclonal IgG2b, is suitable for use as an isotype control with this antibody.

ターゲット情報

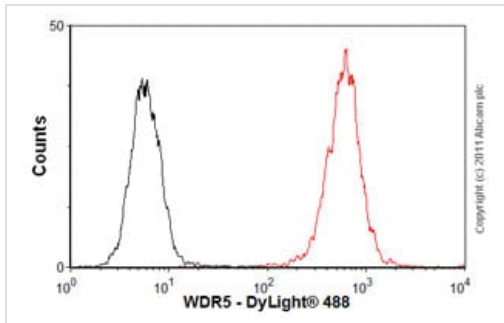
機能	Contributes to histone modification. May position the N-terminus of histone H3 for efficient trimethylation at 'Lys-4'. As part of the MLL1/MLL complex it is involved in methylation and dimethylation at 'Lys-4' of histone H3. H3 'Lys-4' methylation represents a specific tag for epigenetic transcriptional activation. As part of the NSL complex it may be involved in acetylation of nucleosomal histone H4 on several lysine residues. May regulate osteoblasts differentiation.
配列類似性	Belongs to the WD repeat WDR5/wds family. Contains 7 WD repeats.
細胞内局在	Nucleus.

画像



WDR5 antibody (ab56919) at 1µg/lane + Hs 181 S cell lysate at 25µg/lane.

This image was generated using the ascites version of the product.

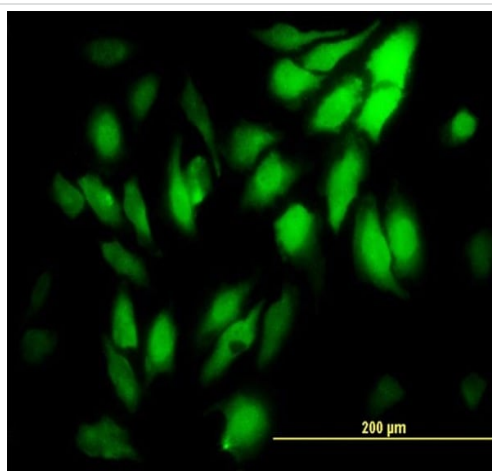


Flow Cytometry - Anti-WDR5 antibody [2C2]
(ab56919)

Overlay histogram showing HeLa cells stained with ab56919 (red line). The cells were fixed with 80% methanol (5 min) and then permeabilized with 0.1% PBS-Tween for 20 min. The cells were then incubated in 1x PBS / 10% normal goat serum / 0.3M glycine to block non-specific protein-protein interactions followed by the antibody (ab56919, 1µg/1x10⁶ cells) for 30 min at 22°C. The secondary antibody used was DyLight® 488 goat anti-mouse IgG (H+L) ([ab96879](#)) at 1/500 dilution for 30 min at 22°C. Isotype control antibody (black line) was mouse IgG2b [PLPV219] ([ab91366](#), 2µg/1x10⁶ cells) used under the same conditions.

Acquisition of >5,000 events was performed. This antibody gave a positive signal in HeLa cells fixed with 4% paraformaldehyde/permeabilized in 0.1% PBS-Tween used under the same conditions.

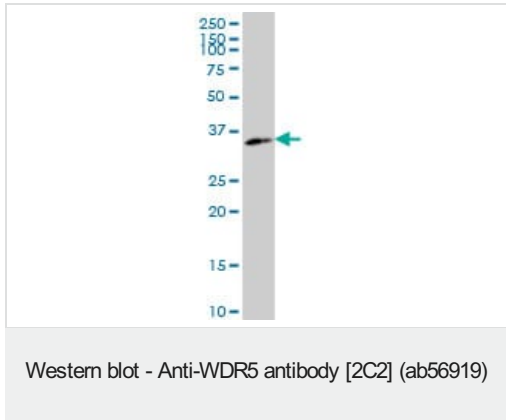
This image was generated using the ascites version of the product.



Immunocytochemistry/ Immunofluorescence - Anti-WDR5 antibody [2C2] (ab56919)

HeLa (human epithelial cell line from cervix adenocarcinoma) cells stained for WDR5 (green) using ab56919 at 10 µg/ml in ICC/IF.

This image was generated using the ascites version of the product.



Anti-WDR5 antibody [2C2] (ab56919) at 1 µg/ml + Hs 181.Tes cell lysate

Predicted band size: 36 kDa

This image was generated using the ascites version of the product.

Please note: All products are "FOR RESEARCH USE ONLY. NOT FOR USE IN DIAGNOSTIC PROCEDURES"

Our Abpromise to you: Quality guaranteed and expert technical support

- Replacement or refund for products not performing as stated on the datasheet
- Valid for 12 months from date of delivery
- Response to your inquiry within 24 hours
- We provide support in Chinese, English, French, German, Japanese and Spanish
- Extensive multi-media technical resources to help you
- We investigate all quality concerns to ensure our products perform to the highest standards

If the product does not perform as described on this datasheet, we will offer a refund or replacement. For full details of the Abpromise, please visit <https://www.abcam.co.jp/abpromise> or contact our technical team.

Terms and conditions

- Guarantee only valid for products bought direct from Abcam or one of our authorized distributors