

Anti-WDR4 antibody [EPR11052] ab169526

KO 評価済 リコンビナント RabMAb

★★★★★ **3 Abreviews** **2 References** 画像数 7

製品の概要

製品名	Anti-WDR4 antibody [EPR11052]
製品の詳細	Rabbit monoclonal [EPR11052] to WDR4
由来種	Rabbit
アプリケーション	適用あり: Flow Cyt (Intra), WB, IHC-P, ICC/IF
種交差性	交差種: Human
免疫原	Synthetic peptide. This information is proprietary to Abcam and/or its suppliers.
ポジティブ・コントロール	WB: HeLa, A549, MCF7, and HepG2 cell lysates. ICC/IF: HeLa cells. Flow Cyt (Intra): HeLa cells. IHC-P: Human prostatic hyperplasia and Human breast carcinoma tissues.
特記事項	<p>This product is a recombinant monoclonal antibody, which offers several advantages including:</p> <ul style="list-style-type: none"> - High batch-to-batch consistency and reproducibility - Improved sensitivity and specificity - Long-term security of supply - Animal-free production <p>For more information see here.</p> <p>Our RabMAb[®] technology is a patented hybridoma-based technology for making rabbit monoclonal antibodies. For details on our patents, please refer to RabMAb[®] patents.</p>

製品の特性

製品の状態	Liquid
保存方法	Shipped at 4°C. Store at +4°C short term (1-2 weeks). Upon delivery aliquot. Store at -20°C long term. Avoid freeze / thaw cycle.
バッファー	<p>pH: 7.20</p> <p>Preservative: 0.01% Sodium azide</p> <p>Constituents: 59% PBS, 40% Glycerol (glycerin, glycerine), 0.05% BSA</p>
精製度	Protein A purified
ポリ/モノ	モノクローナル
クローン名	EPR11052
アイソタイプ	IgG

アプリケーション

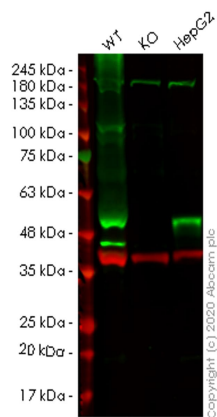
The Abpromise guarantee **Abpromise保証は、**次のテスト済みアプリケーションにおけるab169526の使用に適用されます
アプリケーションノートには、推奨の開始希釈率がありますが、適切な希釈率につきましてはご検討ください。

アプリケーション	Abreviews	特記事項
Flow Cyt (Intra)		1/100 - 1/500. ab172730 - Rabbit monoclonal IgG, is suitable for use as an isotype control with this antibody.
WB	★★★★★ (2)	1/1000. Detects a band of approximately 45 kDa (predicted molecular weight: 45 kDa). For unpurified use at 1/10000 - 1/50000.
IHC-P		1/1000. Perform heat mediated antigen retrieval with citrate buffer pH 6 before commencing with IHC staining protocol. For unpurified use at 1/250 - 1/500.
ICC/IF	★★★★★ (1)	1/50 - 1/2000.

ターゲット情報

機能	Required for the formation of N(7)-methylguanine at position 46 (m7G46) in tRNA. In the complex, it is required to stabilize and induce conformational change of the catalytic subunit.
パスウェイ	tRNA modification; N(7)-methylguanine-tRNA biosynthesis.
配列類似性	Belongs to the WD repeat TRM82 family. Contains 4 WD repeats.
細胞内局在	Nucleus.

画像



Western blot - Anti-WDR4 antibody [EPR11052]
(ab169526)

All lanes : Anti-WDR4 antibody [EPR11052] (ab169526) at 1/1000 dilution

Lane 1 : Wild-type HeLa cell lysate

Lane 2 : WDR4 knockout HeLa cell lysate

Lane 3 : HepG2 cell lysate

Lysates/proteins at 20 µg per lane.

Secondary

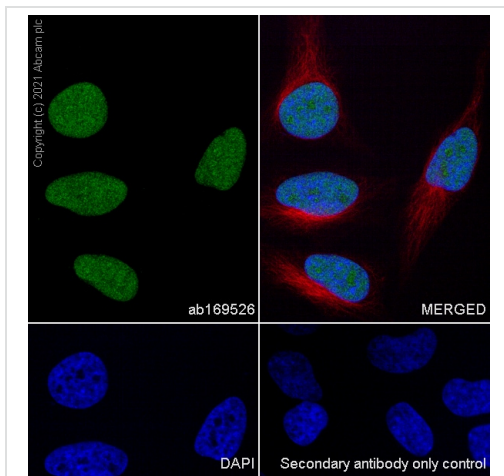
All lanes : Goat anti-Rabbit IgG H&L (IRDye® 800CW) preadsorbed ([ab216773](#)) at 1/10000 dilution

Predicted band size: 45 kDa

Observed band size: 49 kDa

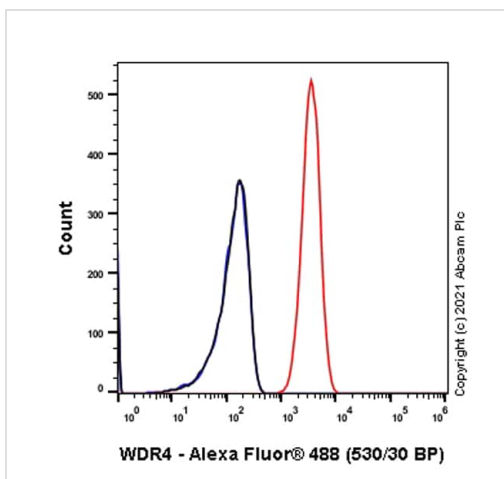
Lanes 1-3: Merged signal (red and green). Green - ab169526 observed at 49 kDa. Red - loading control [ab8245](#) observed at 36 kDa.

ab169526 Anti-WDR4 antibody [EPR11052] was shown to specifically react with WDR4 in wild-type HeLa cells. Loss of signal was observed when knockout cell line [ab265109](#) (knockout cell lysate [ab258285](#)) was used. Wild-type and WDR4 knockout samples were subjected to SDS-PAGE. ab169526 and Anti-GAPDH antibody [6C5] - Loading Control ([ab8245](#)) were incubated overnight at 4°C at 1 in 1000 dilution and 1 in 20000 dilution respectively. Blots were developed with Goat anti-Rabbit IgG H&L (IRDye® 800CW) preadsorbed ([ab216773](#)) and Goat anti-Mouse IgG H&L (IRDye® 680RD) preadsorbed ([ab216776](#)) secondary antibodies at 1 in 20000 dilution for 1 hour at room temperature before imaging.



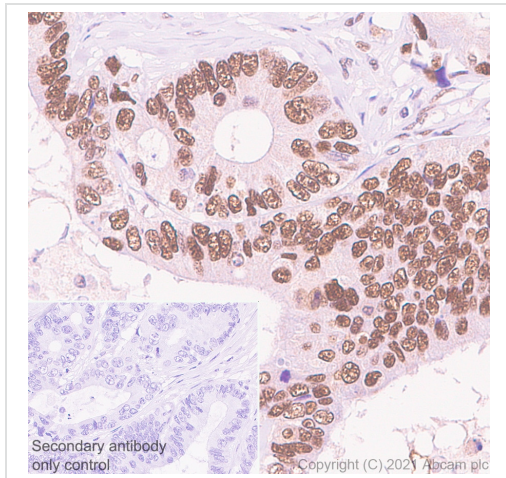
Immunocytochemistry/ Immunofluorescence - Anti-WDR4 antibody [EPR11052] (ab169526)

Immunocytochemistry analysis of HeLa (Human cervix adenocarcinoma epithelial cell) cells labeling WDR4 with purified ab169526 at 1:100 dilution (10.2 µg/ml). Cells were fixed in 4% Paraformaldehyde and permeabilized with 0.1% tritonX-100. Cells were counterstained with Anti-alpha Tubulin antibody [DM1A] - Microtubule Marker (Alexa Fluor® 594) at 1/200 dilution (2.5 µg/ml) (**ab195889**) (red). Goat anti-rabbit IgG (Alexa Fluor® 488) (**ab150077**) was used as the secondary antibody at 1:1000 (2 µg/ml) dilution. DAPI (blue) was used as a nuclear counterstain. PBS instead of the primary antibody was used as the secondary antibody only control.



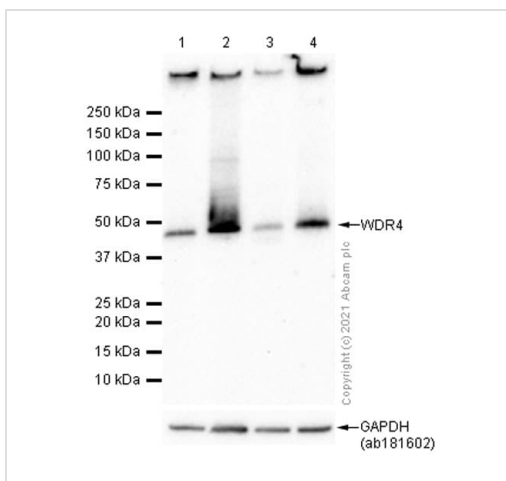
Flow Cytometry (Intracellular) - Anti-WDR4 antibody [EPR11052] (ab169526)

Flow Cytometry analysis of HeLa (Human cervix adenocarcinoma epithelial cell) cells labelling WDR4 with purified ab169526 at 1/100 dilution (10 µg/ml) (red). Cells were fixed with 4% Paraformaldehyde and permeabilised with 90% Methanol. A Goat anti-rabbit IgG (Alexa Fluor® 488) (**ab150081**) secondary antibody was used at 1/2000. Isotype control - Rabbit monoclonal IgG (black). Unlabelled control - Cell without incubation with primary antibody and secondary antibody (blue).



Immunohistochemistry (Formalin/PFA-fixed paraffin-embedded sections) - Anti-WDR4 antibody [EPR11052] (ab169526)

Immunohistochemistry (Formalin/PFA-fixed paraffin-embedded sections) analysis of human prostatic hyperplasia tissue sections labeling WDR4 with purified ab169526 at 1:1000 (1.026 µg/ml). Heat mediated antigen retrieval was performed using Bond™ Epitope Retrieval Solution 1 (pH 6.0). Tissue was counterstained with Hematoxylin. Rabbit specific IHC polymer detection kit HRP/DAB ([ab209101](#)) was used at 1:0 dilution. PBS instead of the primary antibody was used as the negative control. The immunostaining was performed on a Leica Biosystems BOND® RX instrument.



Western blot - Anti-WDR4 antibody [EPR11052] (ab169526)

Lanes 1-2 : Anti-WDR4 antibody [EPR11052] (ab169526) at 1/1000 dilution (Purified)

Lanes 3-4 : Anti-WDR4 antibody [EPR11052] (ab169526) at 1/1000 dilution

Lane 1 : HepG2 (Human hepatocellular carcinoma epithelial cell) whole cell lysate

Lane 2 : HeLa (Human cervix adenocarcinoma epithelial cell) whole cell lysate

Lane 3 : A549 (Human lung carcinoma epithelial cell) whole cell lysate

Lane 4 : MCF7 (Human breast adenocarcinoma epithelial cell) whole cell lysate

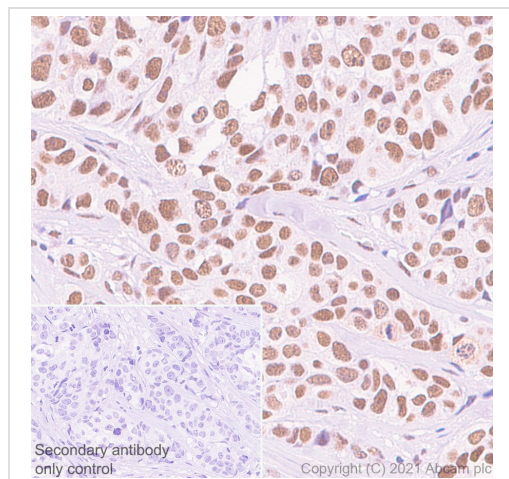
Lysates/proteins at 20 µg per lane.

Secondary

All lanes : Goat Anti-Rabbit IgG H&L (HRP) ([ab97051](#)) at 1/100000 dilution

Predicted band size: 45 kDa





Observed band size: 45 kDa



Immunohistochemistry (Formalin/PFA-fixed paraffin-embedded sections) - Anti-WDR4 antibody
[EPR11052] (ab169526)

Immunohistochemistry (Formalin/PFA-fixed paraffin-embedded sections) analysis of human breast carcinoma tissue sections labeling WDR4 with purified ab169526 at 1:1000 (1.026 µg/ml). Heat mediated antigen retrieval was performed using Bond™ Epitope Retrieval Solution 1 (pH 6.0). Tissue was counterstained with Hematoxylin. Rabbit specific IHC polymer detection kit HRP/DAB (**ab209101**) was used at 1:0 dilution. PBS instead of the primary antibody was used as the negative control. The immunostaining was performed on a Leica Biosystems BOND® RX instrument.

Why choose a recombinant antibody?

 <p>Research with confidence Consistent and reproducible results</p>	 <p>Long-term and scalable supply Recombinant technology</p>
 <p>Success from the first experiment Confirmed specificity</p>	 <p>Ethical standards compliant Animal-free production</p>

Anti-WDR4 antibody [EPR11052] (ab169526)

Please note: All products are "FOR RESEARCH USE ONLY. NOT FOR USE IN DIAGNOSTIC PROCEDURES"

Our Abpromise to you: Quality guaranteed and expert technical support

- Replacement or refund for products not performing as stated on the datasheet
- Valid for 12 months from date of delivery
- Response to your inquiry within 24 hours
- We provide support in Chinese, English, French, German, Japanese and Spanish
- Extensive multi-media technical resources to help you
- We investigate all quality concerns to ensure our products perform to the highest standards

If the product does not perform as described on this datasheet, we will offer a refund or replacement. For full details of the Abpromise, please visit <https://www.abcam.co.jp/abpromise> or contact our technical team.

Terms and conditions

- Guarantee only valid for products bought direct from Abcam or one of our authorized distributors