


Anti-WDR33 antibody ab72115

画像数 2

製品の概要

製品名	Anti-WDR33 antibody
製品の詳細	Rabbit polyclonal to WDR33
由来種	Rabbit
アプリケーション	適用あり: WB, IP
種交差性	交差種: Human 交差が予測される動物種: Horse, Chicken, Cow, Dog, Turkey, Pig, Chimpanzee, Rhesus monkey, Gorilla, Orangutan, Platypus 
免疫原	Synthetic peptide corresponding to a region between residues 1286 and 1336 of human WDR33 (NP_060853.3).
ポジティブ・コントロール	HeLa and 293T whole cell lysates.
特記事項	<p>The Life Science industry has been in the grips of a reproducibility crisis for a number of years. Abcam is leading the way in addressing this with our range of recombinant monoclonal antibodies and knockout edited cell lines for gold-standard validation. Please check that this product meets your needs before purchasing.</p> <p>If you have any questions, special requirements or concerns, please send us an inquiry and/or contact our Support team ahead of purchase. Recommended alternatives for this product can be found below, along with publications, customer reviews and Q&As</p>

製品の特性

製品の状態	Liquid
保存方法	Shipped at 4°C. Upon delivery aliquot and store at -20°C. Avoid freeze / thaw cycles.
バッファー	pH: 6.8 Preservative: 0.09% Sodium azide Constituents: 0.1% BSA, Tris buffered saline
精製度	Immunogen affinity purified
特記事項(精製)	ab72115 was affinity purified using an epitope specific to WDR33 immobilized on solid support.
ポリモノ	ポリクローナル
アイソタイプ	IgG

アプリケーション

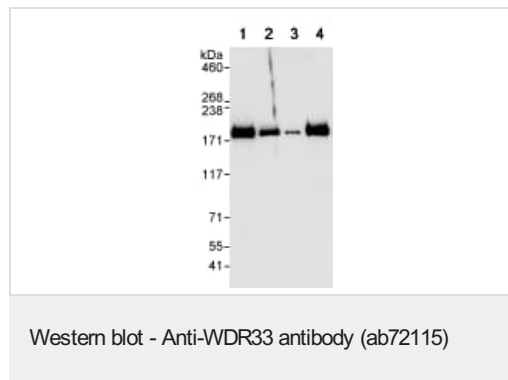
The Abpromise guarantee Abpromise保証は、次のテスト済みアプリケーションにおけるab72115の使用に適用されず
アプリケーションノートには、推奨の開始希釈率がありますが、適切な希釈率につきましてはご検討ください。

アプリケーション	Abreviews	特記事項
WB		1/2000 - 1/10000. Detects a band of approximately 180 kDa (predicted molecular weight: 146 kDa).
IP		Use at 2-5 µg/mg of lysate.

ターゲット情報

組織特異性	Most highly expressed in testis.
配列類似性	Contains 1 collagen-like domain. Contains 7 WD repeats.
細胞内局在	Nucleus.

画像



All lanes : Anti-WDR33 antibody (ab72115) at 0.04 µg/ml

Lane 1 : HeLa whole cell lysate at 50 µg/ml

Lane 2 : HeLa whole cell lysate at 15 µg/ml

Lane 3 : HeLa whole cell lysate at 5 µg/ml

Lane 4 : 293T whole cell lysate at 50 µg/ml

Developed using the ECL technique.

Predicted band size: 146 kDa

Observed band size: 180 kDa

Exposure time: 10 seconds



Detection of WDR33 by Western Blot of Immunoprecipitate.

ab72115 at 1µg/ml staining WDR33 in HeLa whole cell lysate immunoprecipitated using ab72115 at 3µg/mg lysate (1 mg/IP; 20% of IP loaded/lane).

Detection: Chemiluminescence with exposure time of 10 seconds.

Please note: All products are "FOR RESEARCH USE ONLY. NOT FOR USE IN DIAGNOSTIC PROCEDURES"

Our Abpromise to you: Quality guaranteed and expert technical support

- Replacement or refund for products not performing as stated on the datasheet
- Valid for 12 months from date of delivery
- Response to your inquiry within 24 hours
- We provide support in Chinese, English, French, German, Japanese and Spanish
- Extensive multi-media technical resources to help you
- We investigate all quality concerns to ensure our products perform to the highest standards

If the product does not perform as described on this datasheet, we will offer a refund or replacement. For full details of the Abpromise, please visit <https://www.abcam.co.jp/abpromise> or contact our technical team.

Terms and conditions

- Guarantee only valid for products bought direct from Abcam or one of our authorized distributors