

### Anti-WDR11 antibody ab93871

★★★★☆ [4 Abreviews](#) [4 References](#) [画像数 2](#)

#### 製品の概要

製品名	Anti-WDR11 antibody
製品の詳細	Rabbit polyclonal to WDR11
由来種	Rabbit
アプリケーション	<b>適用あり:</b> WB, IP
種交差性	<b>交差種:</b> Human <b>交差が予測される動物種:</b> Chimpanzee, Gorilla 
免疫原	Synthetic peptide corresponding to Human WDR11 aa 1150-1250. Database link: <a href="#">Q9BZH6</a>
ポジティブ・コントロール	Whole cell lysate from HeLa and 293T cells
特記事項	<p>The Life Science industry has been in the grips of a reproducibility crisis for a number of years. Abcam is leading the way in addressing this with our range of recombinant monoclonal antibodies and knockout edited cell lines for gold-standard validation. Please check that this product meets your needs before purchasing.</p> <p>If you have any questions, special requirements or concerns, please send us an inquiry and/or contact our Support team ahead of purchase. Recommended alternatives for this product can be found below, along with publications, customer reviews and Q&amp;As</p>

#### 製品の特性

製品の状態	Liquid
保存方法	Shipped at 4°C. Upon delivery aliquot and store at -20°C. Avoid freeze / thaw cycles.
バッファー	pH: 6.8 Preservative: 0.09% Sodium azide Constituents: 0.1% BSA, Tris buffered saline
精製度	Immunogen affinity purified
ポリ/モノ	ポリクローナル
アイソタイプ	IgG

#### アプリケーション

**The Abpromise guarantee**      Abpromise保証は、 次のテスト済みアプリケーションにおけるab93871の使用に適用されます  
 アプリケーションノートには、推奨の開始希釈率がありますが、適切な希釈率につきましてはご検討ください。

アプリケーション	Abreviews	特記事項
WB	★★★★★ (2)	1/2000 - 1/10000. Predicted molecular weight: 137 kDa.
IP		Use at 2-5 µg/mg of lysate.

## ターゲット情報

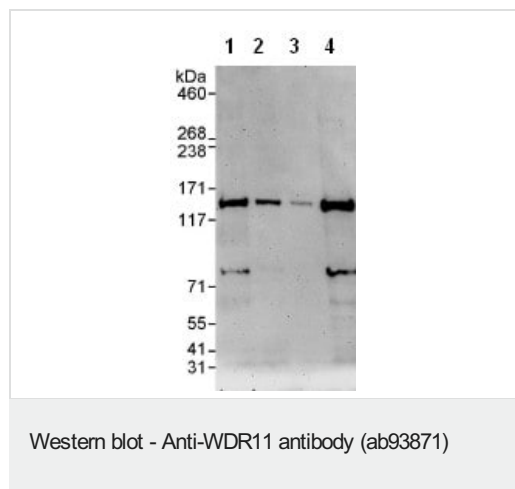
関連性

WDR11 is a member of the WD repeat protein family. WD repeats are minimally conserved regions of approximately 40 amino acids typically bracketed by gly-his and trp-asp (GH-WD), which may facilitate formation of heterotrimeric or multiprotein complexes. Members of this family are involved in a variety of cellular processes, including cell cycle progression, signal transduction, apoptosis, and gene regulation. The WDR11 gene is located in the chromosome 10q25-26 region, which is frequently deleted in gliomas and tumors of other tissues, and is disrupted by the t(10;19) translocation rearrangement in glioblastoma cells. The gene location suggests that it is a candidate gene for the tumor suppressor locus.

細胞内局在

Membrane; Single-pass membrane protein, Cytoplasmic and Nuclear

## 画像



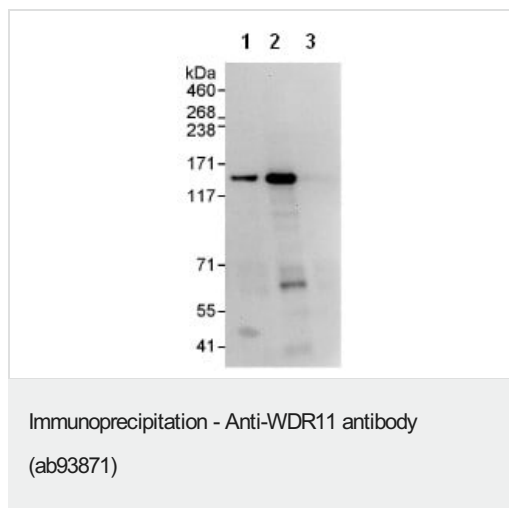
**All lanes :** Anti-WDR11 antibody (ab93871) at 0.04 µg/ml

- Lane 1 :** HeLa whole cell lysate at 50 µg
- Lane 2 :** HeLa whole cell lysate at 15 µg
- Lane 3 :** HeLa whole cell lysate at 5 µg
- Lane 4 :** 293T cell lysate at 50 µg

Developed using the ECL technique.

**Predicted band size:** 137 kDa

**Exposure time:** 3 minutes



ab93871 at 1 µg/ml detecting WDR11 in HeLa whole cell lysate by WB following IP.

Lane 1: IP with an antibody which recognizes an upstream epitope of WDR11

Lane 2: ab93871 at 3µg/mg of lysate

Lane 3: control IgG.

In each case, 1 mg of lysate was used for IP and 20% of the IP was loaded.

Detection: Chemiluminescence an with exposure time of 10 seconds

**Please note:** All products are "FOR RESEARCH USE ONLY. NOT FOR USE IN DIAGNOSTIC PROCEDURES"

### Our Abpromise to you: Quality guaranteed and expert technical support

- Replacement or refund for products not performing as stated on the datasheet
- Valid for 12 months from date of delivery
- Response to your inquiry within 24 hours
- We provide support in Chinese, English, French, German, Japanese and Spanish
- Extensive multi-media technical resources to help you
- We investigate all quality concerns to ensure our products perform to the highest standards

If the product does not perform as described on this datasheet, we will offer a refund or replacement. For full details of the Abpromise, please visit <https://www.abcam.co.jp/abpromise> or contact our technical team.

### Terms and conditions

- Guarantee only valid for products bought direct from Abcam or one of our authorized distributors