

Anti-WBSCR22 antibody ab97911

3 References [画像枚数?](#)

医薬用外劇物

製品の概要

製品名	Anti-WBSCR22 antibody
製品の詳細	Rabbit polyclonal to WBSCR22
由来種	Rabbit
アプリケーション	適用あり: IHC-P, WB
種交差性	交差種: Human
免疫原	Recombinant fragment, corresponding to a sequence within amino acids 1-233 of Human WBSCR22 (NP_059998).
特記事項	<p>The Life Science industry has been in the grips of a reproducibility crisis for a number of years. Abcam is leading the way in addressing this with our range of recombinant monoclonal antibodies and knockout edited cell lines for gold-standard validation. Please check that this product meets your needs before purchasing.</p> <p>If you have any questions, special requirements or concerns, please send us an inquiry and/or contact our Support team ahead of purchase. Recommended alternatives for this product can be found below, along with publications, customer reviews and Q&As</p>

製品の特性

製品の状態	Liquid
保存方法	Shipped at 4°C. Upon delivery aliquot. Store at -20°C or -80°C. Avoid freeze / thaw cycle.
バッファー	pH: 7.00 Preservative: 0.01% Thimerosal (merthiolate) Constituents: 1.21% Tris, 0.75% Glycine, 10% Glycerol (glycerin, glycerine)
精製度	Immunogen affinity purified
ポリ/モノ	ポリクローナル
アイソタイプ	IgG

アプリケーション

The Abpromise guarantee

Abpromise保証は、 次のテスト済みアプリケーションにおけるab97911の使用に適用されます

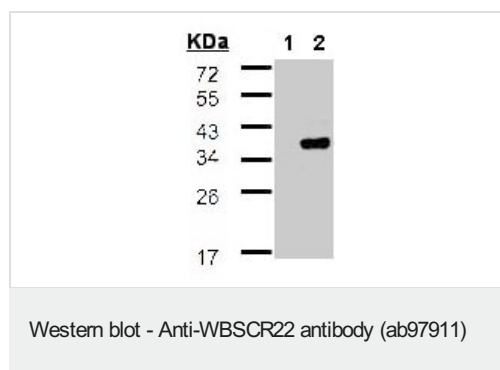
アプリケーションノートには、推奨の開始希釈率がありますが、適切な希釈率につきましてはご検討ください。

アプリケーション	Abreviews	特記事項
IHC-P		1/100 - 1/250. The staining pattern is dependent on the antibody titer and nature of the biology. Proliferating tumor cells might be positive for nuclear staining while the differentiated cells show no nuclear staining. Antibody titer and antigen retrieval time should be adjusted.
WB		1/500 - 1/3000. Predicted molecular weight: 32 kDa.

ターゲット情報

機能	Methyltransferase that may act on DNA.
組織特異性	Strongly expressed in heart, skeletal muscle and kidney. Also expressed in spleen, liver, lung and testis.
関連疾患	Note=WBSCR22 is located in the Williams-Beuren syndrome (WBS) critical region. WBS results from a hemizygous deletion of several genes on chromosome 7q11.23, thought to arise as a consequence of unequal crossing over between highly homologous low-copy repeat sequences flanking the deleted region. Haploinsufficiency of WBSCR22 may be the cause of certain cardiovascular and musculo-skeletal abnormalities observed in the disease.
配列類似性	Belongs to the methyltransferase superfamily.
細胞内局在	Nucleus.

画像



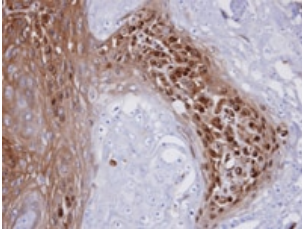
All lanes : Anti-WBSCR22 antibody (ab97911) at 1/500 dilution

Lane 1 : Non-transfected lysate

Lane 2 : 293T cell lysate transfected with WBSCR22

Predicted band size: 32 kDa

12% SDS-PAGE.



ab97911 at 1/100 dilution staining WBSCR22 in CA922 xenograft by Immunohistochemistry, Paraffin-embedded tissue.

Immunohistochemistry (Formalin/PFA-fixed paraffin-embedded sections) - Anti-WBSCR22 antibody (ab97911)

Please note: All products are "FOR RESEARCH USE ONLY. NOT FOR USE IN DIAGNOSTIC PROCEDURES"

Our Abpromise to you: Quality guaranteed and expert technical support

- Replacement or refund for products not performing as stated on the datasheet
- Valid for 12 months from date of delivery
- Response to your inquiry within 24 hours
- We provide support in Chinese, English, French, German, Japanese and Spanish
- Extensive multi-media technical resources to help you
- We investigate all quality concerns to ensure our products perform to the highest standards

If the product does not perform as described on this datasheet, we will offer a refund or replacement. For full details of the Abpromise, please visit <https://www.abcam.co.jp/abpromise> or contact our technical team.

Terms and conditions

- Guarantee only valid for products bought direct from Abcam or one of our authorized distributors