


Anti-WASP/Wiskott-Aldrich syndrome protein (phospho Y290) antibody ab59278

5 References [画像数 2](#)

製品の概要

製品名	Anti-WASP/Wiskott-Aldrich syndrome protein (phospho Y290) antibody
製品の詳細	Rabbit polyclonal to WASP/Wiskott-Aldrich syndrome protein (phospho Y290)
由来種	Rabbit
アプリケーション	適用あり: ELISA, WB, IHC-P
種交差性	交差種: Human 交差が予測される動物種: Mouse 
免疫原	Synthetic peptide corresponding to Human WASP/Wiskott-Aldrich syndrome protein aa 250-350 (phospho Y290). Database link: P42768
ポジティブ・コントロール	WB: Extracts from HepG2 cells. IHC-P: Human brain tissue.
特記事項	<p>The Life Science industry has been in the grips of a reproducibility crisis for a number of years. Abcam is leading the way in addressing this with our range of recombinant monoclonal antibodies and knockout edited cell lines for gold-standard validation. Please check that this product meets your needs before purchasing.</p> <p>If you have any questions, special requirements or concerns, please send us an inquiry and/or contact our Support team ahead of purchase. Recommended alternatives for this product can be found below, along with publications, customer reviews and Q&As</p>

製品の特性

製品の状態	Liquid
保存方法	Shipped at 4°C. Store at -20°C. Stable for 12 months at -20°C.
バッファー	pH: 7.40 Preservative: 0.02% Sodium azide Constituents: PBS, 50% Glycerol (glycerin, glycerine), 0.87% Sodium chloride
	Without Mg+2 and Ca+2
精製度	Immunogen affinity purified
ポリ/モノ	ポリクローナル

アプリケーション

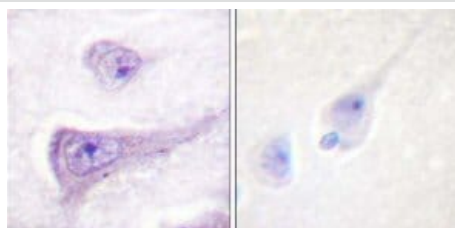
The Abpromise guarantee **Abpromise保証は、次のテスト済みアプリケーションにおけるab59278の使用に適用されます**
 アプリケーションノートには、推奨の開始希釈率がありますが、適切な希釈率につきましてはご確認ください。

アプリケーション	Abreviews	特記事項
ELISA		Use at an assay dependent concentration.
WB		1/500 - 1/1000. Detects a band of approximately 60 kDa (predicted molecular weight: 53 kDa).
IHC-P		Use at an assay dependent concentration.

ターゲット情報

機能	Effector protein for Rho-type GTPases, providing a link with the Arp2/3 complex that regulates the structure and dynamics of the actin cytoskeleton. Important for efficient actin polymerization. Possible regulator of lymphocyte and platelet function.
組織特異性	Expressed predominantly in the thymus. Also found, to a much lesser extent, in the spleen.
関連疾患	Defects in WAS are the cause of Wiskott-Aldrich syndrome (WAS) [MIM:301000]; also known as eczema-thrombocytopenia-immunodeficiency syndrome. WAS is an X-linked recessive immunodeficiency characterized by eczema, thrombocytopenia, recurrent infections, and bloody diarrhea. Death usually occurs before age 10. Defects in WAS are the cause of thrombocytopenia type 1 (THC1) [MIM:313900]. Thrombocytopenia is defined by a decrease in the number of platelets in circulating blood, resulting in the potential for increased bleeding and decreased ability for clotting. Defects in WAS are a cause of neutropenia severe congenital X-linked (XLN) [MIM:300299]. XLN is an immunodeficiency syndrome characterized by recurrent major bacterial infections, severe congenital neutropenia, and monocytopenia.
配列類似性	Contains 1 CRIB domain. Contains 1 WH1 domain. Contains 1 WH2 domain.
ドメイン	The WH1 (Wasp homology 1) domain may bind a Pro-rich ligand. The CRIB (Cdc42/Rac-interactive-binding) region binds to the C-terminal WH2 domain in the autoinhibited state of the protein. Binding of Rho-type GTPases to the CRIB induces a conformation change and leads to activation.
細胞内局在	Cytoplasm > cytoskeleton.

画像

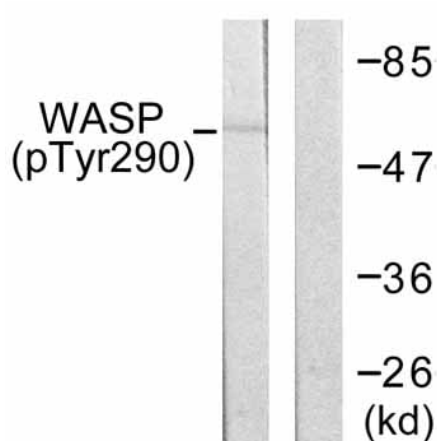


Immunohistochemistry (Formalin/PFA-fixed paraffin-embedded sections) - Anti-WASP/Wiskott-Aldrich syndrome protein (phospho Y290) antibody (ab59278)

Immunohistochemical analysis of paraffin-embedded human brain tissue using ab59278 at a dilution of 1/50.

Left image: no immunising peptide.

Right hand image: with immunising peptide.



Western blot - Anti-WASP/Wiskott-Aldrich syndrome protein (phospho Y290) antibody (ab59278)

All lanes : Anti-WASP/Wiskott-Aldrich syndrome protein (phospho Y290) antibody (ab59278) at 1/500 dilution

Lane 1 : Extracts from HepG2 cells with no immunising peptide

Lane 2 : Extracts from HepG2 cells with immunising peptide

Predicted band size: 53 kDa

Observed band size: 60 kDa

Please note: All products are "FOR RESEARCH USE ONLY. NOT FOR USE IN DIAGNOSTIC PROCEDURES"

Our Abpromise to you: Quality guaranteed and expert technical support

- Replacement or refund for products not performing as stated on the datasheet
- Valid for 12 months from date of delivery
- Response to your inquiry within 24 hours
- We provide support in Chinese, English, French, German, Japanese and Spanish
- Extensive multi-media technical resources to help you
- We investigate all quality concerns to ensure our products perform to the highest standards

If the product does not perform as described on this datasheet, we will offer a refund or replacement. For full details of the Abpromise, please visit <https://www.abcam.co.jp/abpromise> or contact our technical team.

Terms and conditions

- Guarantee only valid for products bought direct from Abcam or one of our authorized distributors