

Anti-WASF3 antibody ab110739

2 References [画像数 1](#)

製品の概要

| | |
|----------|---|
| 製品名 | Anti-WASF3 antibody |
| 製品の詳細 | Rabbit polyclonal to WASF3 |
| 由来種 | Rabbit |
| アプリケーション | 適用あり: IHC-P |
| 種交差性 | 交差種: Human |
| 免疫原 | Synthetic peptide derived from an internal region of Human WASF3. |
| 特記事項 | <p>The Life Science industry has been in the grips of a reproducibility crisis for a number of years. Abcam is leading the way in addressing this with our range of recombinant monoclonal antibodies and knockout edited cell lines for gold-standard validation. Please check that this product meets your needs before purchasing.</p> <p>If you have any questions, special requirements or concerns, please send us an inquiry and/or contact our Support team ahead of purchase. Recommended alternatives for this product can be found below, along with publications, customer reviews and Q&As</p> |

製品の特性

| | |
|--------|---|
| 製品の状態 | Liquid |
| 保存方法 | Shipped at 4°C. Store at -20°C. Stable for 12 months at -20°C. |
| バッファー | <p>pH: 7.40</p> <p>Preservative: 0.02% Sodium azide</p> <p>Constituents: PBS, 0.88% Sodium chloride, 50% Glycerol (glycerin, glycerine)</p> |
| 精製度 | Immunogen affinity purified |
| ポリ/モノ | ポリクローナル |
| アイソタイプ | IgG |

アプリケーション

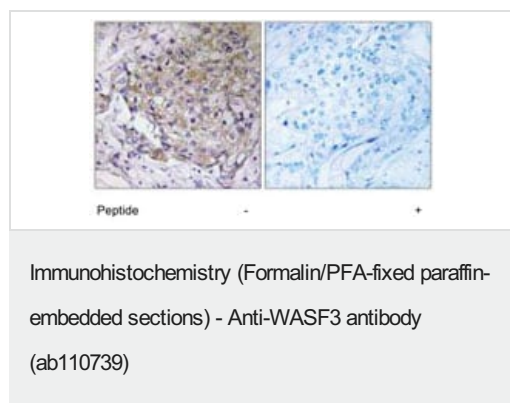
The Abpromise guarantee **Abpromise保証は、次のテスト済みアプリケーションにおけるab110739の使用に適用されます**
 アプリケーションノートには、推奨の開始希釈率がありますが、適切な希釈率につきましてはご検討ください。

| アプリケーション | Abreviews | 特記事項 |
|----------|-----------|--|
| IHC-P | | 1/50 - 1/100. Perform heat mediated antigen retrieval with citrate buffer pH 6 before commencing with IHC staining protocol. |

ターゲット情報

| | |
|-------|---|
| 機能 | Downstream effector molecules involved in the transmission of signals from tyrosine kinase receptors and small GTPases to the actin cytoskeleton. |
| 組織特異性 | Expressed in ovary and brain. |
| 配列類似性 | Belongs to the SCAR/WAVE family. Contains 1 WH2 domain. |
| ドメイン | Binds the Arp2/3 complex through the C-terminal region and actin through verprolin homology (VPH) domain. |
| 細胞内局在 | Cytoplasm > cytoskeleton. |

画像



Immunohistochemistry analysis of paraffin-embedded Human breast carcinoma tissue using ab110739 at a dilution of 1/50. Right panel was also treated with blocking peptide.

Please note: All products are "FOR RESEARCH USE ONLY. NOT FOR USE IN DIAGNOSTIC PROCEDURES"

Our Abpromise to you: Quality guaranteed and expert technical support

- Replacement or refund for products not performing as stated on the datasheet
- Valid for 12 months from date of delivery
- Response to your inquiry within 24 hours
- We provide support in Chinese, English, French, German, Japanese and Spanish
- Extensive multi-media technical resources to help you
- We investigate all quality concerns to ensure our products perform to the highest standards

If the product does not perform as described on this datasheet, we will offer a refund or replacement. For full details of the Abpromise, please visit <https://www.abcam.co.jp/abpromise> or contact our technical team.

Terms and conditions

- Guarantee only valid for products bought direct from Abcam or one of our authorized distributors