


Anti-WAC antibody ab109486

★★★★★ 1 Abreviews 画像数 2

製品の概要

製品名	Anti-WAC antibody
製品の詳細	Rabbit polyclonal to WAC
由来種	Rabbit
特異性	From Jan 2024, QC testing of replenishment batches of this polyclonal changed. All tested and expected application and reactive species combinations are still covered by our Abcam product promise. However, we no longer test all applications. For more information on a specific batch, please contact our Scientific Support who will be happy to help.
アプリケーション	適用あり: WB, ICC/IF
種交差性	交差種: Mouse, Human 交差が予測される動物種: Rat, Rabbit, Horse, Cow, Chimpanzee, Macaque monkey, Gorilla, Chinese hamster, Orangutan 
免疫原	Synthetic peptide. This information is proprietary to Abcam and/or its suppliers.
ポジティブ・コントロール	This antibody gave a positive signal in HeLa Nuclear lysate as well as the following whole cell lysates: HeLa; HEK293; NIH3T3. This antibody gave a positive result when used in the following methanol fixed cell lines: MCF-7.
特記事項	<p>The Life Science industry has been in the grips of a reproducibility crisis for a number of years. Abcam is leading the way in addressing this with our range of recombinant monoclonal antibodies and knockout edited cell lines for gold-standard validation. Please check that this product meets your needs before purchasing.</p> <p>If you have any questions, special requirements or concerns, please send us an inquiry and/or contact our Support team ahead of purchase. Recommended alternatives for this product can be found below, along with publications, customer reviews and Q&As</p>

製品の特性

製品の状態	Liquid
保存方法	Shipped at 4°C. Store at +4°C short term (1-2 weeks). Upon delivery aliquot. Store at -20°C or -80°C. Avoid freeze / thaw cycle.
バッファー	pH: 7.40 Preservative: 0.02% Sodium azide Constituent: PBS

Batches of this product that have a concentration < 1mg/ml may have BSA added as a stabilising agent. If you would like information about the formulation of a specific lot, please contact our scientific support team who will be happy to help.

精製度	Immunogen affinity purified
ポリ/モノ	ポリクローナル
アイソタイプ	IgG

アプリケーション

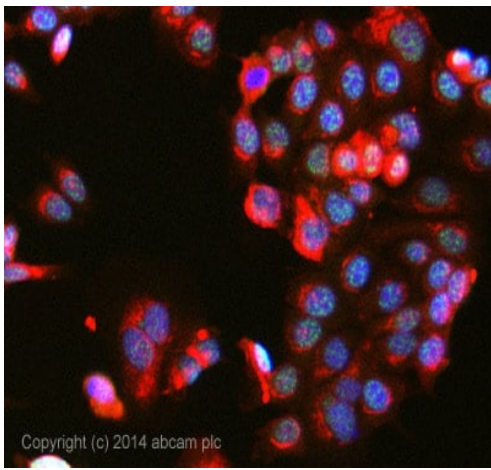
The Abpromise guarantee **Abpromise保証は、次のテスト済みアプリケーションにおけるab109486の使用に適用されます**
アプリケーションノートには、推奨の開始希釈率がありますが、適切な希釈率につきましてはご検討ください。

アプリケーション	Abreviews	特記事項
WB		Use a concentration of 1 µg/ml. Detects a band of approximately 83 kDa (predicted molecular weight: 71 kDa).
ICC/IF	★★★★★ (1)	Use a concentration of 5 µg/ml.

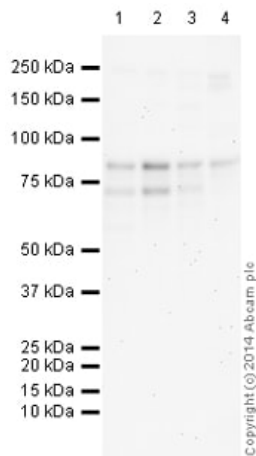
ターゲット情報

機能	Acts as a linker between gene transcription and histone H2B monoubiquitination at 'Lys-120' (H2BK120ub1). Interacts with the RNA polymerase II transcriptional machinery via its WW domain and with RNF20-RNF40 via its coiled coil region, thereby linking and regulating H2BK120ub1 and gene transcription. Regulates the cell-cycle checkpoint activation in response to DNA damage.
配列類似性	Contains 1 WW domain.
翻訳後修飾	Phosphorylated on tyrosine residues.
細胞内局在	Nucleus speckle. Nucleus. In distinct nuclear speckles. Colocalizes with pre-mRNA processing complexes.

画像



Immunocytochemistry/ Immunofluorescence - Anti-WAC antibody (ab109486)



Western blot - Anti-WAC antibody (ab109486)

ICC/IF image of ab109486 stained MCF-7 cells. The cells were 100% methanol fixed (5 min) and then incubated in 1%BSA / 10% normal goat serum / 0.3M glycine in 0.1% PBS-Tween for 1h to permeabilise the cells and block non-specific protein-protein interactions. The cells were then incubated with the antibody ab109486 at 5µg/ml overnight at +4°C. The secondary antibody (pseudo-colored green) was Alexa Fluor® 488 goat anti- rabbit (**ab150081**) IgG (H+L) preadsorbed, used at a 1/1000 dilution for 1h. Alexa Fluor® 594 WGA was used to label plasma membranes (pseudo-colored red) at a 1/200 dilution for 1h at room temperature. DAPI was used to stain the cell nuclei (pseudo-colored blue) at a concentration of 1.43µM for 1hour at room temperature.

All lanes : Anti-WAC antibody (ab109486) at 1 µg/ml (Milk blocking - 3%)

Lane 1 : HeLa (Human epithelial carcinoma cell line) Whole Cell Lysate

Lane 2 : HeLa (Human epithelial carcinoma cell line) Nuclear Lysate

Lane 3 : HEK293 (Human embryonic kidney cell line) Whole Cell Lysate

Lane 4 : NIH 3T3 (Mouse embryonic fibroblast cell line) Whole Cell Lysate

Lysates/proteins at 25 µg per lane.

Secondary

All lanes : Goat Anti-Rabbit IgG H&L (HRP) (**ab97051**) at 1/10000 dilution

Developed using the ECL technique.

Performed under reducing conditions.

Predicted band size: 71 kDa

Observed band size: 85 kDa

Exposure time: 20 minutes

The predicted molecular weight of WAC is 71 kDa (SwissProt),

however we expect to observe a banding pattern around 85 kDa. Abcam welcomes customer feedback and would appreciate any comments regarding this product and the data presented above.

This blot was produced using a 4-12% Bis-tris gel under the MOPS buffer system. The gel was run at 200V for 50 minutes before being transferred onto a Nitrocellulose membrane at 30V for 70 minutes. The membrane was then blocked for an hour using 3% Milk before being incubated with ab109486 overnight at 4°C. Antibody binding was detected using an anti-rabbit antibody conjugated to HRP, and visualised using ECL development solution.

Please note: All products are "FOR RESEARCH USE ONLY. NOT FOR USE IN DIAGNOSTIC PROCEDURES"

Our Abpromise to you: Quality guaranteed and expert technical support

- Replacement or refund for products not performing as stated on the datasheet
- Valid for 12 months from date of delivery
- Response to your inquiry within 24 hours
- We provide support in Chinese, English, French, German, Japanese and Spanish
- Extensive multi-media technical resources to help you
- We investigate all quality concerns to ensure our products perform to the highest standards

If the product does not perform as described on this datasheet, we will offer a refund or replacement. For full details of the Abpromise, please visit <https://www.abcam.co.jp/abpromise> or contact our technical team.

Terms and conditions

- Guarantee only valid for products bought direct from Abcam or one of our authorized distributors