

Anti-VPS37D antibody ab122683

画像数 2

製品の概要

製品名	Anti-VPS37D antibody
製品の詳細	Rabbit polyclonal to VPS37D
由来種	Rabbit
アプリケーション	適用あり: IHC-P, ICC/IF
種交差性	交差種: Human
免疫原	antigen sequence: LRDLLQDEPK LDRVRLSRK FQGLQLEREA CLASNYALAK ENLALRPRLE MGRAALAIKY QELREVAENC ADKLQRLEES MHRWSPHC, corresponding to amino acids 27-114 of Human VPS37D.

[Run BLAST with Expasy](#) [Run BLAST with NCBI](#)

ポジティブ・コントロール

IHC: Human liver tissue. ICC/IF: Human cell line SH-SY5Y.

特記事項

The Life Science industry has been in the grips of a reproducibility crisis for a number of years. Abcam is leading the way in addressing this with our range of recombinant monoclonal antibodies and knockout edited cell lines for gold-standard validation. Please check that this product meets your needs before purchasing.

If you have any questions, special requirements or concerns, please send us an inquiry and/or contact our Support team ahead of purchase. Recommended alternatives for this product can be found below, along with publications, customer reviews and Q&As

製品の特性

製品の状態	Liquid
保存方法	Shipped at 4°C. Upon delivery aliquot and store at -20°C. Avoid freeze / thaw cycles.
バッファー	pH: 7.20 Preservative: 0.02% Sodium azide Constituents: 40% Glycerol (glycerin, glycerine), 59% PBS
精製度	Immunogen affinity purified
ポリ/モノ	ポリクローナル
アイソタイプ	IgG

アプリケーション

The Abpromise guarantee

Abpromise保証は、次のテスト済みアプリケーションにおけるab122683の使用に適用されます

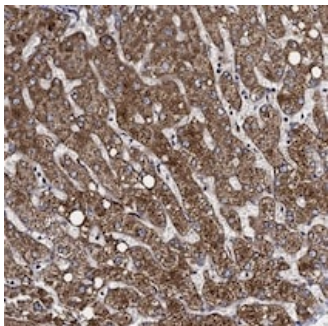
アプリケーションノートには、推奨の開始希釈率がありますが、適切な希釈率につきましてはご検討ください。

アプリケーション	Abreviews	特記事項
IHC-P		1/20 - 1/50. Perform heat mediated antigen retrieval with citrate buffer pH 6 before commencing with IHC staining protocol.
ICC/IF		Use a concentration of 0.25 - 2 µg/ml.

ターゲット情報

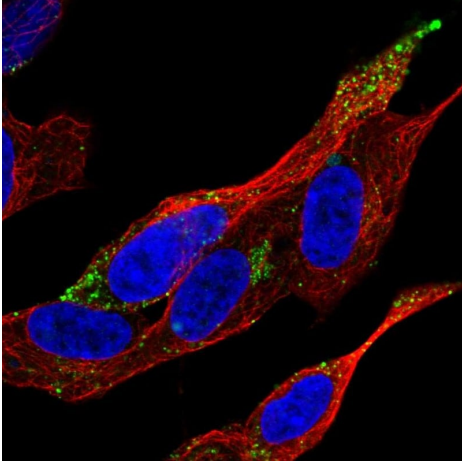
機能	Component of the ESCRT-I complex, a regulator of vesicular trafficking process. Required for the sorting of endocytic ubiquitinated cargos into multivesicular bodies. May be involved in cell growth and differentiation.
関連疾患	Note=VPS37D is located in the Williams-Beuren syndrome (WBS) critical region. WBS results from a hemizygous deletion of several genes on chromosome 7q11.23, thought to arise as a consequence of unequal crossing over between highly homologous low-copy repeat sequences flanking the deleted region.
配列類似性	Belongs to the VPS37 family. Contains 1 VPS37 C-terminal domain.
細胞内局在	Late endosome membrane.

画像



ab122683, at 1/20 dilution, staining VPS37D in paraffin-embedded Human liver tissue by Immunohistochemistry.

Immunohistochemistry (Formalin/PFA-fixed paraffin-embedded sections) - Anti-VPS37D antibody (ab122683)



Immunocytochemistry/ Immunofluorescence - Anti-VPS37D antibody (ab122683)

Immunocytochemistry/immunofluorescence analysis of human cell line SH-SY5Y labelling VPS37D with ab122683 at 2 µg/mL shows localization to vesicles.

Please note: All products are "FOR RESEARCH USE ONLY. NOT FOR USE IN DIAGNOSTIC PROCEDURES"

Our Abpromise to you: Quality guaranteed and expert technical support

- Replacement or refund for products not performing as stated on the datasheet
- Valid for 12 months from date of delivery
- Response to your inquiry within 24 hours
- We provide support in Chinese, English, French, German, Japanese and Spanish
- Extensive multi-media technical resources to help you
- We investigate all quality concerns to ensure our products perform to the highest standards

If the product does not perform as described on this datasheet, we will offer a refund or replacement. For full details of the Abpromise, please visit <https://www.abcam.co.jp/abpromise> or contact our technical team.

Terms and conditions

- Guarantee only valid for products bought direct from Abcam or one of our authorized distributors