


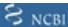


Anti-VPS29 antibody ab10160

9 References [画像数 1](#)

製品の概要

製品名	Anti-VPS29 antibody
製品の詳細	Goat polyclonal to VPS29
由来種	Goat
アプリケーション	適用あり: WB
種交差性	交差種: Human 交差が予測される動物種: Mouse, Rat, Dog 
免疫原	Synthetic peptide: DDVKVERIEYKKP, corresponding to C terminal amino acids 170-182 of Human VPS29.  Run BLAST with  Run BLAST with 
ポジティブ・コントロール	Human muscle and kidney extracts.
特記事項	<p>VPS29, VPS30, and VPS35 proteins are required for the normal recycling of Vps10p, a late Golgi transmembrane protein that acts as the sorting receptor for soluble vacuolar hydrolases, from the prevacuolar endosome back to the Golgi.</p> <p>The Life Science industry has been in the grips of a reproducibility crisis for a number of years. Abcam is leading the way in addressing this with our range of recombinant monoclonal antibodies and knockout edited cell lines for gold-standard validation. Please check that this product meets your needs before purchasing.</p> <p>If you have any questions, special requirements or concerns, please send us an inquiry and/or contact our Support team ahead of purchase. Recommended alternatives for this product can be found below, along with publications, customer reviews and Q&As</p>

製品の特性

製品の状態	Liquid
保存方法	Shipped at 4°C. Upon delivery aliquot and store at -20°C or -80°C. Avoid repeated freeze / thaw cycles.
バッファー	pH: 7.30 Preservative: 0.02% Sodium azide Constituents: Tris buffered saline, 0.5% BSA
精製度	Immunogen affinity purified

特記事項 (精製)	Purified from goat serum by ammonium sulphate precipitation followed by antigen affinity chromatography using the immunizing peptide.
一次抗体 備考	VPS29, VPS30, and VPS35 proteins are required for the normal recycling of Vps10p, a late Golgi transmembrane protein that acts as the sorting receptor for soluble vacuolar hydrolases, from the prevacuolar endosome back to the Golgi.
ポリ/モノ	ポリクローナル
アイソタイプ	IgG

アプリケーション

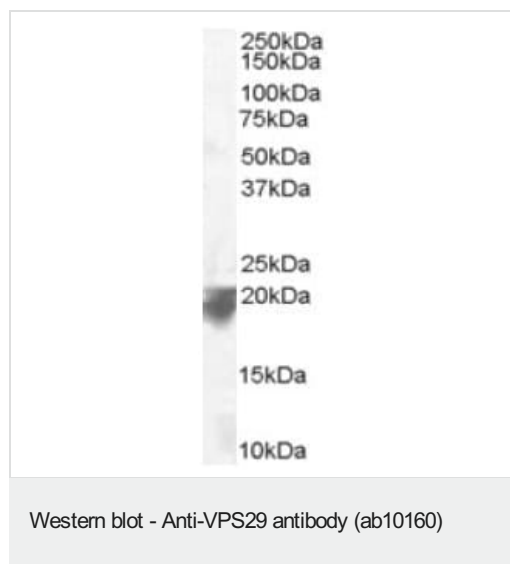
The Abpromise guarantee Abpromise保証は、 次のテスト済みアプリケーションにおけるab10160の使用に適用されます
アプリケーションノートには、推奨の開始希釈率がありますが、適切な希釈率につきましてはご検討ください。

アプリケーション	Abreviews	特記事項
WB		Use a concentration of 0.1 - 0.3 µg/ml. Predicted molecular weight: 20 kDa. 1 hour primary incubation is recommended for this product.

ターゲット情報

機能	Essential component of the retromer complex, a complex required to retrieve lysosomal enzyme receptors (IGF2R and M6PR) from endosomes to the trans-Golgi network. Also required to regulate transcytosis of the polymeric immunoglobulin receptor (pIgR-pIgA). Has low protein phosphatase activity towards a serine-phosphorylated peptide derived from IGF2R (in vitro).
組織特異性	Ubiquitous. Highly expressed in heart, lung, placenta, spleen, peripheral blood leukocytes, thymus, colon skeletal muscle, kidney and brain.
配列類似性	Belongs to the VPS29 family.
細胞内局在	Cytoplasm. Membrane. Endosome membrane.

画像



Anti-VPS29 antibody (ab10160) at 0.1 µg/ml + Human Spleen lysate (RIPA buffer, 35µg total protein per lane)

Predicted band size: 20 kDa

Observed band size: 20 kDa

Primary incubated for 1 hour. Detected by western blot using chemiluminescence.

Please note: All products are "FOR RESEARCH USE ONLY. NOT FOR USE IN DIAGNOSTIC PROCEDURES"

Our Abpromise to you: Quality guaranteed and expert technical support

- Replacement or refund for products not performing as stated on the datasheet
- Valid for 12 months from date of delivery
- Response to your inquiry within 24 hours
- We provide support in Chinese, English, French, German, Japanese and Spanish
- Extensive multi-media technical resources to help you
- We investigate all quality concerns to ensure our products perform to the highest standards

If the product does not perform as described on this datasheet, we will offer a refund or replacement. For full details of the Abpromise, please visit <https://www.abcam.co.jp/abpromise> or contact our technical team.

Terms and conditions

- Guarantee only valid for products bought direct from Abcam or one of our authorized distributors