

Anti-VPREB3 antibody ab88487

画像数 1

製品の概要

| | |
|--------------|---|
| 製品名 | Anti-VPREB3 antibody |
| 製品の詳細 | Rabbit polyclonal to VPRED3 |
| 由来種 | Rabbit |
| アプリケーション | 適用あり: WB |
| 種交差性 | 交差種: Human |
| 免疫原 | Synthetic peptide corresponding to Human VPRED3 aa 50 to the C-terminus conjugated to keyhole limpet haemocyanin. (Peptide available as ab104280) |
| ポジティブ・コントロール | This antibody gave a positive control in Raji and Ramos whole cell lysates. |
| 特記事項 | <p>The Life Science industry has been in the grips of a reproducibility crisis for a number of years. Abcam is leading the way in addressing this with our range of recombinant monoclonal antibodies and knockout edited cell lines for gold-standard validation. Please check that this product meets your needs before purchasing.</p> <p>If you have any questions, special requirements or concerns, please send us an inquiry and/or contact our Support team ahead of purchase. Recommended alternatives for this product can be found below, along with publications, customer reviews and Q&As</p> |

製品の特性

| | |
|-------|--|
| 製品の状態 | Liquid |
| 保存方法 | Shipped at 4°C. Store at +4°C short term (1-2 weeks). Upon delivery aliquot. Store at -20°C or -80°C. Avoid freeze / thaw cycle. |
| バッファー | <p>pH: 7.40</p> <p>Preservative: 0.02% Sodium azide</p> <p>Constituent: PBS</p> <p>Batches of this product that have a concentration < 1mg/ml may have BSA added as a stabilising agent. If you would like information about the formulation of a specific lot, please contact our scientific support team who will be happy to help.</p> |
| 精製度 | Immunogen affinity purified |
| ポリ/モノ | ポリクローナル |

アプリケーション

The Abpromise guarantee

Abpromise保証は、次のテスト済みアプリケーションにおけるab88487の使用に適用されます

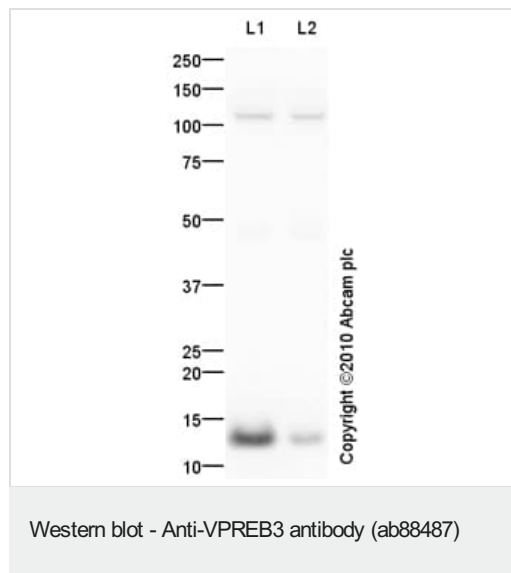
アプリケーションノートには、推奨の開始希釈率がありますが、適切な希釈率につきましてはご検討ください。

| アプリケーション | Abreviews | 特記事項 |
|----------|-----------|--|
| WB | | Use a concentration of 1 µg/ml. Detects a band of approximately 14 kDa (predicted molecular weight: 14 kDa). |

ターゲット情報

| | |
|-------|---|
| 機能 | Associates with the Ig-µ chain to form a molecular complex that is expressed on the surface of pre-B-cells. |
| 組織特異性 | Expressed in B-cell precursors. Expressed in fetal liver, bone marrow, spleen and lymph node. |
| 配列類似性 | Belongs to the immunoglobulin superfamily. Contains 1 Ig-like (immunoglobulin-like) domain. |

画像



All lanes : Anti-VPREB3 antibody (ab88487) at 1 µg/ml

Lane 1 : Ramos (Human Burkitt's lymphoma cell line) Whole Cell Lysate

Lane 2 : Raji (Human Burkitt's lymphoma cell line) Whole Cell Lysate

Lysates/proteins at 10 µg per lane.

Secondary

All lanes : Goat Anti-Rabbit IgG H&L (HRP) preadsorbed (**ab97080**) at 1/5000 dilution

Developed using the ECL technique.

Performed under reducing conditions.

Predicted band size: 14 kDa

Observed band size: 14 kDa

Additional bands at: 110 kDa. We are unsure as to the identity of these extra bands.

Exposure time: 16 minutes

Please note: All products are "FOR RESEARCH USE ONLY. NOT FOR USE IN DIAGNOSTIC PROCEDURES"

Our Abpromise to you: Quality guaranteed and expert technical support

- Replacement or refund for products not performing as stated on the datasheet
- Valid for 12 months from date of delivery
- Response to your inquiry within 24 hours
- We provide support in Chinese, English, French, German, Japanese and Spanish
- Extensive multi-media technical resources to help you
- We investigate all quality concerns to ensure our products perform to the highest standards

If the product does not perform as described on this datasheet, we will offer a refund or replacement. For full details of the Abpromise, please visit <https://www.abcam.co.jp/abpromise> or contact our technical team.

Terms and conditions

- Guarantee only valid for products bought direct from Abcam or one of our authorized distributors