

# Anti-VKORC1 antibody [EPR20245] ab206656

リコンビナント **RabMAb**

## 2 References [画像数 9](#)

### 製品の概要

製品名	Anti-VKORC1 antibody [EPR20245]
製品の詳細	Rabbit monoclonal [EPR20245] to VKORC1
由来種	Rabbit
特異性	This antibody is unsuitable for IHC in human.
アプリケーション	<b>適用あり:</b> WB, IP, IHC-P, ICC/IF, Flow Cyt (Intra)
種交差性	<b>交差種:</b> Mouse, Human
免疫原	Recombinant fragment. This information is proprietary to Abcam and/or its suppliers.
ポジティブ・コントロール	WB: Human fetal kidney and fetal liver lysates; Mouse liver, lung and pancreas lysates; HepG2 and A549 whole cell lysates. IHC-P: Mouse liver tissue. ICC/IF: HepG2 and A549 cells. Flow Cyt (intra): HepG2 cells. IP: HepG2 whole cell lysate.
特記事項	<p>This product is a recombinant monoclonal antibody, which offers several advantages including:</p> <ul style="list-style-type: none"> <li>- High batch-to-batch consistency and reproducibility</li> <li>- Improved sensitivity and specificity</li> <li>- Long-term security of supply</li> <li>- Animal-free production</li> </ul> <p>For more information <a href="#">see here</a>.</p> <p>Our RabMAb<sup>®</sup> technology is a patented hybridoma-based technology for making rabbit monoclonal antibodies. For details on our patents, please refer to <a href="#">RabMAb<sup>®</sup> patents</a>.</p>

### 製品の特性

製品の状態	Liquid
保存方法	Shipped at 4°C. Store at +4°C short term (1-2 weeks). Upon delivery aliquot. Store at -20°C long term. Avoid freeze / thaw cycle.
バッファー	<p>pH: 7.2</p> <p>Preservative: 0.01% Sodium azide</p> <p>Constituents: 59% PBS, 40% Glycerol (glycerin, glycerine), 0.05% BSA</p>
精製度	Protein A purified
ポリ/モノ	モノクローナル

クローン名	EPR20245
アイソタイプ	IgG

#### アプリケーション

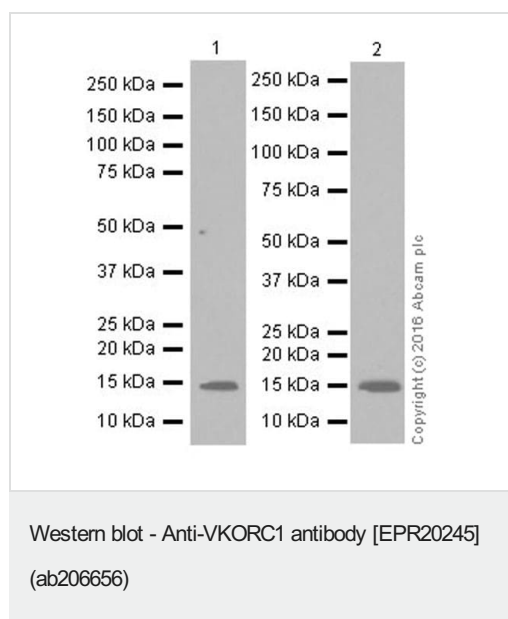
**The Abpromise guarantee**      **Abpromise保証は、** 次のテスト済みアプリケーションにおけるab206656の使用に適用されます  
アプリケーションノートには、推奨の開始希釈率がありますが、適切な希釈率につきましてはご検討ください。

アプリケーション	Abreviews	特記事項
WB		1/1000. Detects a band of approximately 15 kDa (predicted molecular weight: 18 kDa).
IP		1/30.
IHC-P		1/100. Perform heat mediated antigen retrieval with Tris/EDTA buffer pH 9.0 before commencing with IHC staining protocol. This antibody is unsuitable for IHC in human
ICC/IF		1/100.
Flow Cyt (Intra)		1/60.

#### ターゲット情報

機能	Involved in vitamin K metabolism. Catalytic subunit of the vitamin K epoxide reductase (VKOR) complex which reduces inactive vitamin K 2,3-epoxide to active vitamin K.
組織特異性	Expressed at highest levels in fetal and adult liver, followed by fetal heart, kidney, and lung, adult heart, and pancreas.
関連疾患	Defects in VKORC1 are a cause of combined deficiency of vitamin K-dependent clotting factors type 2 (VKCFD2) [MIM:607473]. VKCFD leads to a bleeding tendency that is usually reversed by oral administration of vitamin K. Defects in VKORC1 are a cause of coumarin resistance (CMRES) [MIM:122700]; also known as warfarin resistance. Warfarin and other coumarin-type anticoagulants are used to reduce blood viscosity in the treatment of thromboembolic disorders.
配列類似性	Belongs to the VKOR family.
細胞内局在	Endoplasmic reticulum membrane.

#### 画像



**All lanes :** Anti-VKORC1 antibody [EPR20245] (ab206656) at 1/1000 dilution

**Lane 1 :** Human fetal kidney lysate

**Lane 2 :** Human fetal liver lysate

Lysates/proteins at 10 µg per lane.

### Secondary

**All lanes :** Goat Anti-Rabbit IgG Peroxidase Conjugate, specific to the non-reduced form of IgG at 1/10000 dilution

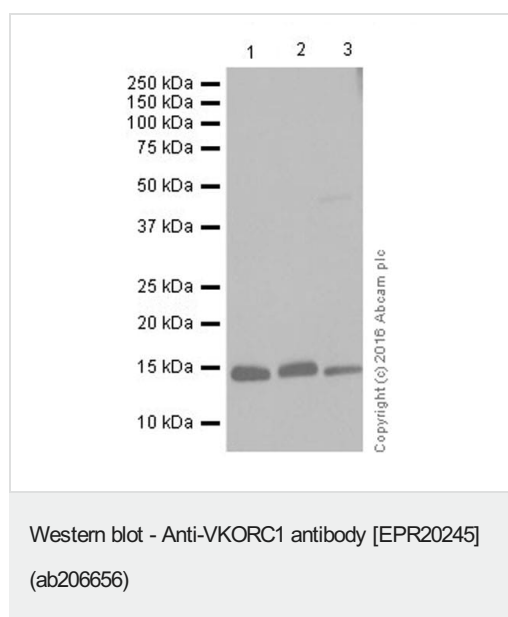
**Predicted band size:** 18 kDa

**Observed band size:** 15 kDa

**Exposure time:** 3 minutes

Blocking/Dilution buffer: 5% NFDM/TBST.

The expression profile/ molecular weight observed is consistent with what has been described in the literature (PMID: 25753038).



**All lanes :** Anti-VKORC1 antibody [EPR20245] (ab206656) at 1/1000 dilution

**Lane 1 :** HepG2 (Human liver hepatocellular carcinoma cell line) whole cell lysate

**Lane 2 :** A549 (Human lung carcinoma cell line) whole cell lysate

**Lane 3 :** Mouse liver lysate

Lysates/proteins at 20 µg per lane.

### Secondary

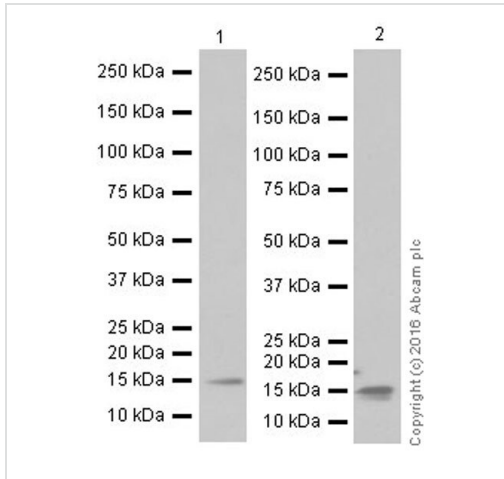
**All lanes :** Goat Anti-Rabbit IgG H&L (HRP) ([ab97051](#)) at 1/100000 dilution

**Predicted band size:** 18 kDa

**Observed band size:** 15 kDa

**Exposure time:** 8 seconds

Blocking/Dilution buffer: 5% NFDm/TBST.



Western blot - Anti-VKORC1 antibody [EPR20245]  
(ab206656)

**All lanes :** Anti-VKORC1 antibody [EPR20245] (ab206656) at 1/1000 dilution

**Lane 1 :** Mouse lung lysate

**Lane 2 :** Mouse pancreas lysate

Lysates/proteins at 10 µg per lane.

### Secondary

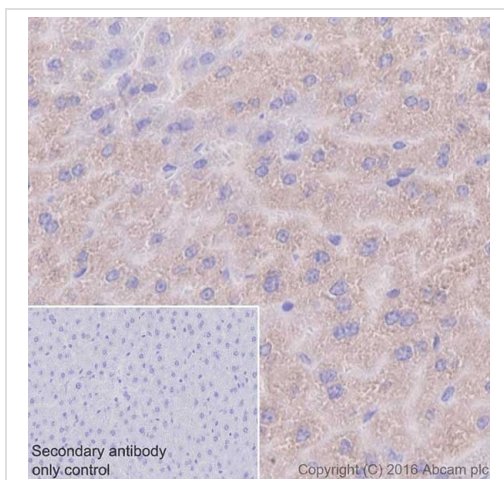
**All lanes :** Goat Anti-Rabbit IgG H&L (HRP) ([ab97051](#)) at 1/100000 dilution

**Predicted band size:** 18 kDa

**Observed band size:** 15 kDa

**Exposure time:** 3 minutes

Blocking/Dilution buffer: 5% NFDm/TBST.

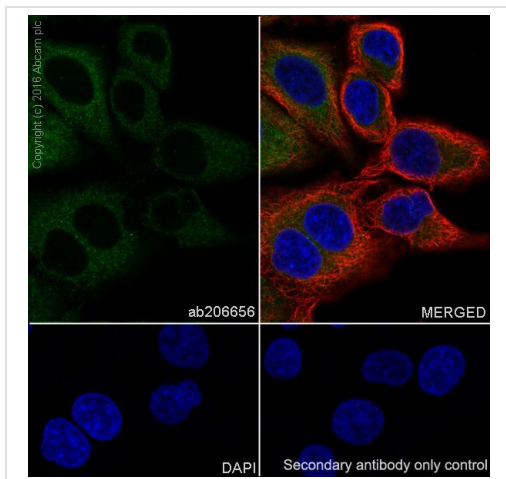


Immunohistochemistry (Formalin/PFA-fixed paraffin-embedded sections) - Anti-VKORC1 antibody [EPR20245] (ab206656)

Immunohistochemical analysis of paraffin-embedded mouse liver tissue labeling VKORC1 with ab206656 at 1/100 dilution, followed by Goat Anti-Rabbit IgG H&L (HRP) ([ab97051](#)) at 1/500 dilution. Cytoplasmic staining on hepatocytes of mouse liver is observed [PMID: 25747820] [PMID:14765194]. Counter stained with Hematoxylin.

Secondary antibody only control: Used PBS instead of primary antibody, secondary antibody is Goat Anti-Rabbit IgG H&L (HRP) ([ab97051](#)) at 1/500 dilution.

Perform heat mediated antigen retrieval with Tris/EDTA buffer pH 9.0 before commencing with IHC staining protocol.

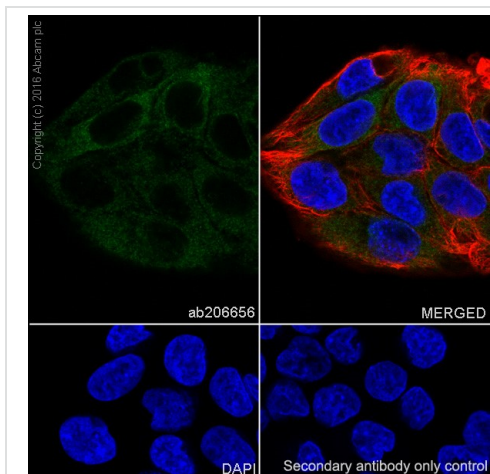


Immunocytochemistry/ Immunofluorescence - Anti-VKORC1 antibody [EPR20245] (ab206656)

Immunofluorescent analysis of 4% paraformaldehyde-fixed, 0.1% Triton X-100 permeabilized A549 (Human lung carcinoma cell line) cells labeling VKORC1 with ab206656 at 1/100 dilution, followed by Goat anti-rabbit IgG (Alexa Fluor® 488) (**ab150077**) secondary antibody at 1/1000 dilution (green). Confocal image showing cytoplasmic staining on A549 cell line.

The nuclear counter stain is DAPI (blue). Tubulin is detected with **ab195889** (Anti-alpha Tubulin antibody [DM1A] - Microtubule Marker (Alexa Fluor® 594)) at 1/200 dilution (red).

Secondary antibody only control: Used PBS instead of primary antibody, secondary antibody is Goat anti-rabbit IgG (Alexa Fluor® 488) (**ab150077**) at 1/1000 dilution.

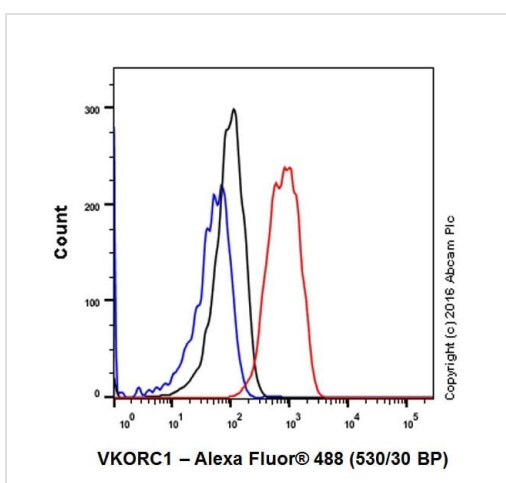


Immunocytochemistry/ Immunofluorescence - Anti-VKORC1 antibody [EPR20245] (ab206656)

Immunofluorescent analysis of 4% paraformaldehyde-fixed, 0.1% Triton X-100 permeabilized HepG2 (Human liver hepatocellular carcinoma cell line) cells labeling VKORC1 with ab206656 at 1/100 dilution, followed by Goat anti-rabbit IgG (Alexa Fluor® 488) (**ab150077**) secondary antibody at 1/1000 dilution (green). Confocal image showing cytoplasmic staining on HepG2 cell line.

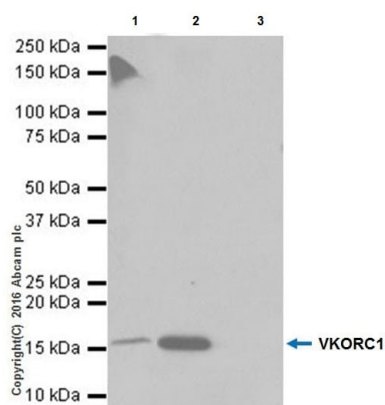
The nuclear counter stain is DAPI (blue). Tubulin is detected with **ab195889** (Anti-alpha Tubulin antibody [DM1A] - Microtubule Marker (Alexa Fluor® 594)) at 1/200 dilution (red).

Secondary antibody only control: Used PBS instead of primary antibody, secondary antibody is Goat anti-rabbit IgG (Alexa Fluor® 488) (**ab150077**) at 1/1000 dilution.



Flow Cytometry (Intracellular) - Anti-VKORC1 antibody [EPR20245] (ab206656)

Intracellular flow cytometric analysis of 4% paraformaldehyde-fixed HepG2 (Human liver hepatocellular carcinoma cell line) cells labeling VKORC1 with ab206656 at 1/60 dilution (red) compared with a rabbit monoclonal IgG isotype control (**ab172730**; black) and an unlabeled control (cells without incubation with primary antibody and secondary antibody; blue). Goat anti rabbit IgG (Alexa Fluor® 488) at 1/2000 dilution was used as the secondary antibody.



Immunoprecipitation - Anti-VKORC1 antibody  
[EPR20245] (ab206656)

VKORC1 was immunoprecipitated from 0.35 mg of HepG2 (Human liver hepatocellular carcinoma cell line) whole cell lysate with ab206656 at 1/30 dilution. Western blot was performed from the immunoprecipitate using ab206656 at 1/1000 dilution. VeriBlot for IP Detection Reagent (HRP) ([ab131366](#)), was used for detection at 1/10000 dilution.

Lane 1: HepG2 whole cell lysate, 10 µg (Input).

Lane 2: ab206656 IP in HepG2 whole cell lysate.

Lane 3: Rabbit monoclonal IgG ([ab172730](#)) instead of ab206656 in HepG2 whole cell lysate.

Blocking and dilution buffer and concentration: 5% NFDm/TBST.

Exposure time: 30 seconds.

### Why choose a recombinant antibody?



**Research with confidence**  
Consistent and reproducible results



**Long-term and scalable supply**  
Recombinant technology



**Success from the first experiment**  
Confirmed specificity



**Ethical standards compliant**  
Animal-free production

Anti-VKORC1 antibody [EPR20245] (ab206656)

**Please note:** All products are "FOR RESEARCH USE ONLY. NOT FOR USE IN DIAGNOSTIC PROCEDURES"

### Our Abpromise to you: Quality guaranteed and expert technical support

- Replacement or refund for products not performing as stated on the datasheet
- Valid for 12 months from date of delivery
- Response to your inquiry within 24 hours
- We provide support in Chinese, English, French, German, Japanese and Spanish
- Extensive multi-media technical resources to help you
- We investigate all quality concerns to ensure our products perform to the highest standards

If the product does not perform as described on this datasheet, we will offer a refund or replacement. For full details of the Abpromise, please visit <https://www.abcam.co.jp/abpromise> or contact our technical team.

## Terms and conditions

---

- Guarantee only valid for products bought direct from Abcam or one of our authorized distributors