

Anti-Vitellogenin antibody [JE-2A6] ab36805

画像数 1

製品の概要

製品名	Anti-Vitellogenin antibody [JE-2A6]
製品の詳細	Mouse monoclonal [JE-2A6] to Vitellogenin
由来種	Mouse
特異性	Does not cross-react with vitellogenin from the other cyrinid species carp (<i>Cyprinus carpio</i>), fathead minnow (<i>Pimephales promelas</i>) or roach (<i>Rutilus rutilus</i>).
アプリケーション	適用あり: WB
種交差性	交差種: Zebrafish
免疫原	Full length native vitellogenin purified from whole body homogenate of 17 beta estradiol treated zebrafish.
特記事項	<p>The Life Science industry has been in the grips of a reproducibility crisis for a number of years. Abcam is leading the way in addressing this with our range of recombinant monoclonal antibodies and knockout edited cell lines for gold-standard validation. Please check that this product meets your needs before purchasing.</p> <p>If you have any questions, special requirements or concerns, please send us an inquiry and/or contact our Support team ahead of purchase. Recommended alternatives for this product can be found below, along with publications, customer reviews and Q&As</p>

製品の特性

製品の状態	Liquid
保存方法	Shipped at 4°C. Store at +4°C short term (1-2 weeks). Store at -20°C or -80°C. Avoid freeze / thaw cycle.
バッファー	<p>pH: 7.40</p> <p>Preservative: 0.08% Sodium azide</p> <p>Constituents: 1% BSA, 0.87% Sodium chloride, 1.64% Sodium phosphate</p>
精製度	Protein G purified
ポリ/モノ	モノクローナル
クローン名	JE-2A6
アイソタイプ	IgG2b
軽鎖の種類	kappa

アプリケーション

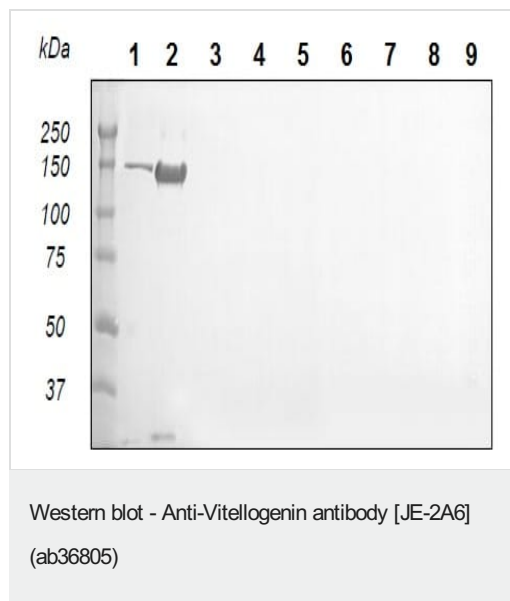
The Abpromise guarantee **Abpromise保証は、** 次のテスト済みアプリケーションにおけるab36805の使用に適用されます
アプリケーションノートには、推奨の開始希釈率がありますが、適切な希釈率につきましてはご検討ください。

アプリケーション	Abreviews	特記事項
WB		1/100 - 1/1000. Predicted molecular weight: 183 kDa.

ターゲット情報

関連性	Vitellogenin (Vg) is an egg yolk precursor protein expressed solely in female fish and is dormant in male fish, but in the presence of estrogenic EDCs, male fish can express the Vg gene but in a dose dependent manner. The use of Vg gene expression in male fish can be used as a molecular marker of exposure to estrogenic Endocrine Disrupting Chemicals (EDCs).
細胞内局在	Secreted

画像



All lanes : Anti-Vitellogenin antibody [JE-2A6] (ab36805) at 1/200 dilution

Lane 1 : Purified zebrafish vitellogenin at 2 µg

Lane 2 : Zebrafish whole body homogenate, 17β-estradiol treated at 10 µg

Lane 3 : Zebrafish whole body homogenate at 10 µg

Lane 4 : Carp plasma, 17β-estradiol treated at 10 µl

Lane 5 : Carp plasma at 10 µl

Lane 6 : Fathead minnow plasma, 17β-estradiol treated at 10 µl

Lane 7 : Fathead minnow plasma at 10 µl

Lane 8 : Roach plasma, 17β-estradiol treated at 10 µl

Lane 9 : Roach plasma at 10 µl

Predicted band size: 183 kDa

Please note: All products are "FOR RESEARCH USE ONLY. NOT FOR USE IN DIAGNOSTIC PROCEDURES"

Our Abpromise to you: Quality guaranteed and expert technical support

- Replacement or refund for products not performing as stated on the datasheet
- Valid for 12 months from date of delivery
- Response to your inquiry within 24 hours

- We provide support in Chinese, English, French, German, Japanese and Spanish
- Extensive multi-media technical resources to help you
- We investigate all quality concerns to ensure our products perform to the highest standards

If the product does not perform as described on this datasheet, we will offer a refund or replacement. For full details of the Abpromise, please visit <https://www.abcam.co.jp/abpromise> or contact our technical team.

Terms and conditions

- Guarantee only valid for products bought direct from Abcam or one of our authorized distributors