

Anti-VEPH1 antibody ab121875

[2 References](#) [画像数 6](#)

製品の概要

製品名	Anti-VEPH1 antibody
製品の詳細	Rabbit polyclonal to VEPH1
由来種	Rabbit
アプリケーション	適用あり: ICC, IHC-P
種交差性	交差種: Human
免疫原	Recombinant fragment within Human VEPH1 aa 1-150. The exact immunogen sequence used to generate this antibody is proprietary information. If additional detail on the immunogen is needed to determine the suitability of the antibody for your needs, please contact our Scientific Support team to discuss your requirements. Database link: Q14D04
ポジティブ・コントロール	IHC-P: Human lung, kidney, adrenal gland, fallopian tube, and endometrium tissues; ICC: Human cell line A-431.
特記事項	<p>The Life Science industry has been in the grips of a reproducibility crisis for a number of years. Abcam is leading the way in addressing this with our range of recombinant monoclonal antibodies and knockout edited cell lines for gold-standard validation. Please check that this product meets your needs before purchasing.</p> <p>If you have any questions, special requirements or concerns, please send us an inquiry and/or contact our Support team ahead of purchase. Recommended alternatives for this product can be found below, along with publications, customer reviews and Q&As</p>

製品の特性

製品の状態	Liquid
保存方法	Shipped at 4°C. Upon delivery aliquot and store at -20°C. Avoid freeze / thaw cycles.
バッファー	pH: 7.20 Preservative: 0.02% Sodium azide Constituents: 40% Glycerol (glycerin, glycerine), 59% PBS
精製度	Immunogen affinity purified
ポリ/モノ	ポリクローナル
アイソタイプ	IgG

アプリケーション

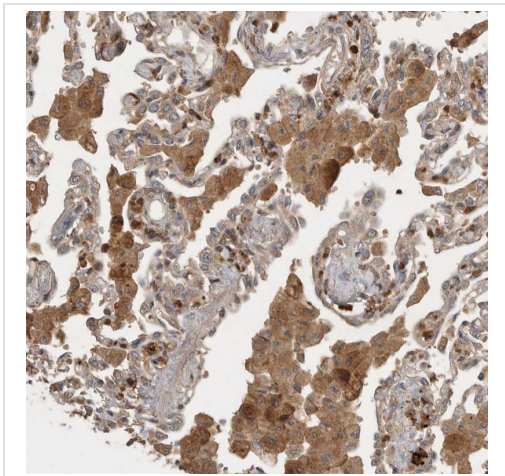
The Abpromise guarantee Abpromise保証は、次のテスト済みアプリケーションにおけるab121875の使用に適用されます
アプリケーションノートには、推奨の開始希釈率がありますが、適切な希釈率につきましてはご確認ください。

アプリケーション	Abreviews	特記事項
ICC		Use a concentration of 0.25 - 2 µg/ml.
IHC-P		1/20 - 1/50. Perform heat mediated antigen retrieval with citrate buffer pH 6 before commencing with IHC staining protocol.

ターゲット情報

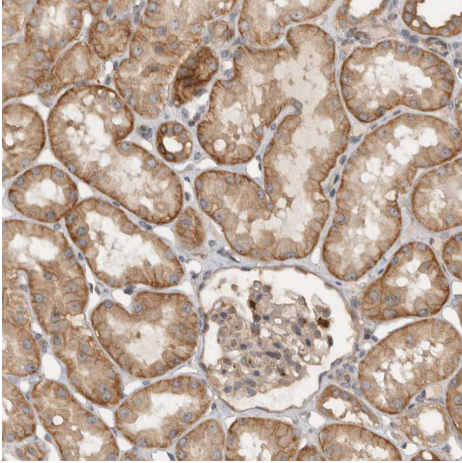
配列類似性	Belongs to the MELT/VEPH family. Contains 1 PH domain.
ドメイン	The PH domain is required for membrane targeting.
細胞内局在	Cell membrane.

画像



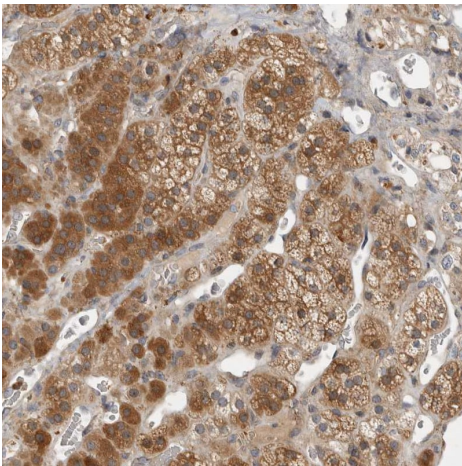
Immunohistochemistry (Formalin/PFA-fixed paraffin-embedded sections) analysis of human lung tissue labelling VEPH1 with ab121875 at 1/20 dilution. Cytoplasmic staining observed in macrophages and alveolar cells.

Immunohistochemistry (Formalin/PFA-fixed paraffin-embedded sections) - Anti-VEPH1 antibody (ab121875)



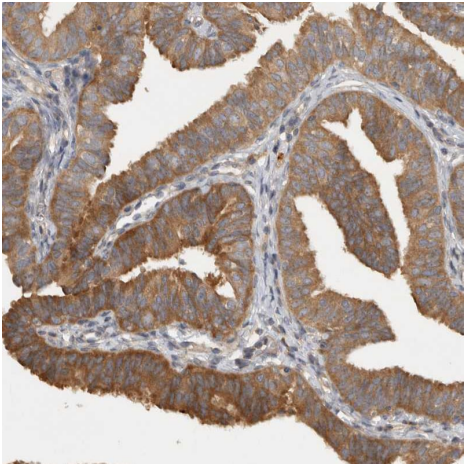
Immunohistochemistry (Formalin/PFA-fixed paraffin-embedded sections) analysis of human kidney tissue labelling VEPH1 with ab121875 at 1/20 dilution. Membranous staining observed in tubule cells.

Immunohistochemistry (Formalin/PFA-fixed paraffin-embedded sections) - Anti-VEPH1 antibody (ab121875)



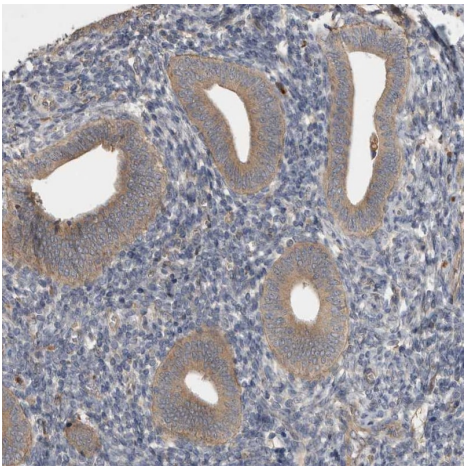
Immunohistochemistry (Formalin/PFA-fixed paraffin-embedded sections) analysis of human adrenal gland tissue labelling VEPH1 with ab121875 at 1/20 dilution. Membranous and cytoplasmic staining observed in glandular cells.

Immunohistochemistry (Formalin/PFA-fixed paraffin-embedded sections) - Anti-VEPH1 antibody (ab121875)



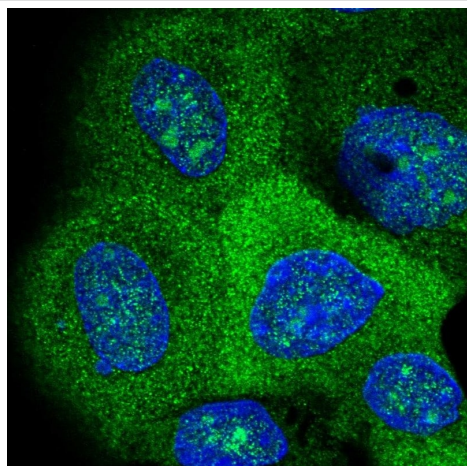
Immunohistochemistry (Formalin/PFA-fixed paraffin-embedded sections) analysis of human fallopian tube tissue labelling VEPH1 with ab121875 at 1/20 dilution. Membranous staining observed in glandular cells.

Immunohistochemistry (Formalin/PFA-fixed paraffin-embedded sections) - Anti-VEPH1 antibody (ab121875)



Immunohistochemistry (Formalin/PFA-fixed paraffin-embedded sections) analysis of human endometrium tissue labelling VEPH1 with ab121875 at 1/20 dilution. Membranous staining observed in tubule cells.

Immunohistochemistry (Formalin/PFA-fixed paraffin-embedded sections) - Anti-VEPH1 antibody (ab121875)



Immunocytochemistry - Anti-VEPH1 antibody
(ab121875)

Immunohistochemistry (Formalin/PFA-fixed paraffin-embedded sections) analysis of human cell line A-431 labelling VEPH1 with ab121875 at 2 µg/mL or dilution

Please note: All products are "FOR RESEARCH USE ONLY. NOT FOR USE IN DIAGNOSTIC PROCEDURES"

Our Abpromise to you: Quality guaranteed and expert technical support

- Replacement or refund for products not performing as stated on the datasheet
- Valid for 12 months from date of delivery
- Response to your inquiry within 24 hours
- We provide support in Chinese, English, French, German, Japanese and Spanish
- Extensive multi-media technical resources to help you
- We investigate all quality concerns to ensure our products perform to the highest standards

If the product does not perform as described on this datasheet, we will offer a refund or replacement. For full details of the Abpromise, please visit <https://www.abcam.co.jp/abpromise> or contact our technical team.

Terms and conditions

- Guarantee only valid for products bought direct from Abcam or one of our authorized distributors