


Anti-VEGFA antibody ab46154

★★★★★ [29 Abreviews](#) [652 References](#) [画像数 3](#)

製品の概要

製品名	Anti-VEGFA antibody
製品の詳細	Rabbit polyclonal to VEGFA
由来種	Rabbit
特異性	Replenishment batches of our polyclonal antibody, ab46154 are tested in WB. Previous batches were additionally validated in ELISA. This application is still expected to work and is covered by our Abpromise guarantee. You may also be interested in our alternative recombinant antibody, ab214424 .
アプリケーション	適用あり: WB, ELISA
種交差性	交差種: Mouse, Human 交差が予測される動物種: Rat 
免疫原	Synthetic peptide corresponding to Human VEGFA aa 50-150 conjugated to keyhole limpet haemocyanin. Database link: P15692 (Peptide available as ab46160)
ポジティブ・コントロール	ab46154 gave a positive result in the following whole cell lysates: Recombinant Human VEGFA protein Recombinant Mouse VEGFA protein HCT116 whole cell lysate
特記事項	<p>New batches of this antibody are no longer guaranteed in ICC/IF, IHC-P or IHC-Fr as they have not passed our stringent batch testing criteria. Please contact customer support for any specific queries. We recommend ab52917 as an alternative for ICC/IF and IHC-P.</p> <p>The Life Science industry has been in the grips of a reproducibility crisis for a number of years. Abcam is leading the way in addressing this with our range of recombinant monoclonal antibodies and knockout edited cell lines for gold-standard validation. Please check that this product meets your needs before purchasing.</p> <p>If you have any questions, special requirements or concerns, please send us an inquiry and/or contact our Support team ahead of purchase. Recommended alternatives for this product can be found below, along with publications, customer reviews and Q&As</p>

製品の特性

製品の状態	Liquid
保存方法	Shipped at 4°C. Store at +4°C short term (1-2 weeks). Upon delivery aliquot. Store at -20°C or -

	80°C. Avoid freeze / thaw cycle.
バッファー	pH: 7.40 Preservative: 0.02% Sodium azide Constituent: PBS
	Batches of this product that have a concentration < 1mg/ml may have BSA added as a stabilising agent. If you would like information about the formulation of a specific lot, please contact our scientific support team who will be happy to help.
精製度	Immunogen affinity purified
ポリ/モノ	ポリクローナル
アイソタイプ	IgG

アプリケーション

The Abpromise guarantee **Abpromise保証は、次のテスト済みアプリケーションにおけるab46154の使用に適用されます**
アプリケーションノートには、推奨の開始希釈率がありますが、適切な希釈率につきましてはご検討ください。

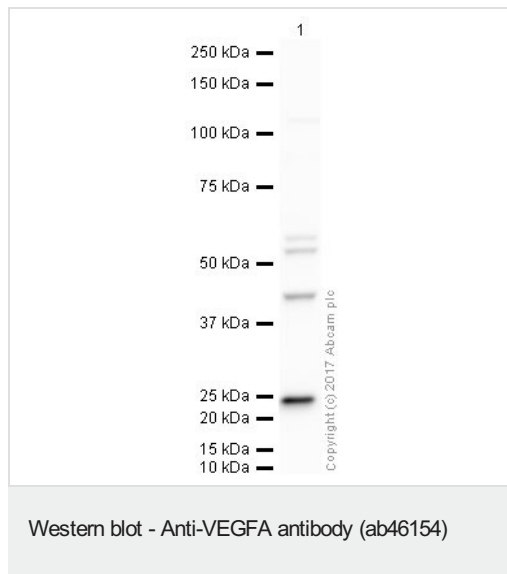
アプリケーション	Abreviews	特記事項
WB	★★★★★ (16)	Use a concentration of 1 µg/ml. Detects a band of approximately 23 kDa (predicted molecular weight: 27 kDa). Can be blocked with Human VEGFA peptide (ab46160) . We recommend Goat Anti-Rabbit IgG H&L (HRP) (ab97051) secondary antibody .
ELISA		Use at an assay dependent concentration.

ターゲット情報

機能	Growth factor active in angiogenesis, vasculogenesis and endothelial cell growth. Induces endothelial cell proliferation, promotes cell migration, inhibits apoptosis and induces permeabilization of blood vessels. Binds to the FLT1/VEGFR1 and KDR/VEGFR2 receptors, heparan sulfate and heparin. NRP1/Neuropilin-1 binds isoforms VEGF-165 and VEGF-145. Isoform VEGF165B binds to KDR but does not activate downstream signaling pathways, does not activate angiogenesis and inhibits tumor growth.
組織特異性	Isoform VEGF189, isoform VEGF165 and isoform VEGF121 are widely expressed. Isoform VEGF206 and isoform VEGF145 are not widely expressed.
関連疾患	Defects in VEGFA are a cause of susceptibility to microvascular complications of diabetes type 1 (MVCD1) [MIM:603933]. These are pathological conditions that develop in numerous tissues and organs as a consequence of diabetes mellitus. They include diabetic retinopathy, diabetic nephropathy leading to end-stage renal disease, and diabetic neuropathy. Diabetic retinopathy remains the major cause of new-onset blindness among diabetic adults. It is characterized by vascular permeability and increased tissue ischemia and angiogenesis.
配列類似性	Belongs to the PDGF/VEGF growth factor family.
細胞内局在	Secreted. VEGF121 is acidic and freely secreted. VEGF165 is more basic, has heparin-binding properties and, although a significant proportion remains cell-associated, most is freely secreted. VEGF189 is very basic, it is cell-associated after secretion and is bound avidly by heparin and

the extracellular matrix, although it may be released as a soluble form by heparin, heparinase or plasmin.

画像



Anti-VEGFA antibody (ab46154) at 1 µg/ml + HCT116 whole cell lysate at 20 µg

Secondary

Rabbit IgG secondary antibody at 1/10000 dilution

Developed using the ECL technique.

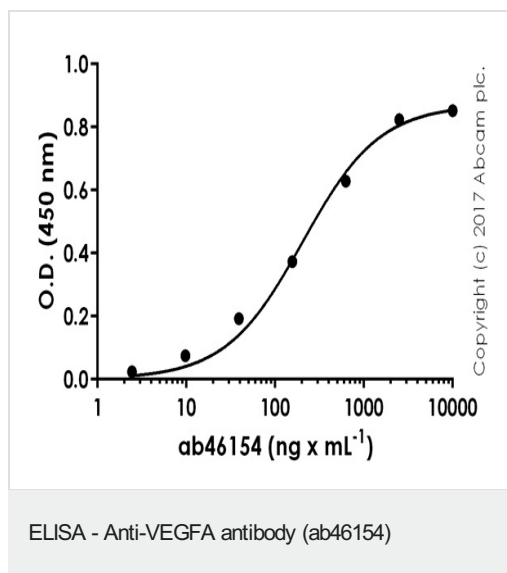
Performed under reducing conditions.

Predicted band size: 27 kDa

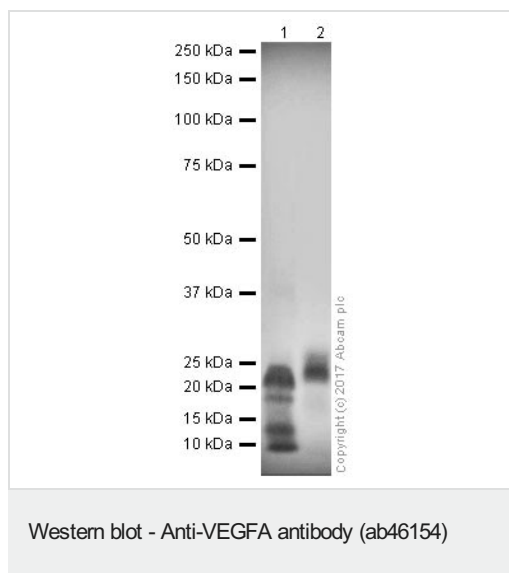
Observed band size: 23 kDa

Exposure time: 2 minutes

This blot was produced using a 10% Bis-tris gel under the MES buffer system. The gel was run at 200V for 35 minutes before being transferred onto a Nitrocellulose membrane at 30V for 70 minutes. The membrane was then blocked for an hour using 5% Bovine Serum Albumin before being incubated with ab46154 overnight at 4°C. Antibody binding was detected using an anti-rabbit antibody conjugated to HRP, and visualised using ECL development solution.



Ab46154 was tested using indirect ELISA. The wells were coated with peptide (1 µg x mL⁻¹ at 100 µL per well) overnight at 4°C, followed by a 1% fat-free milk blocking step for 1 hour at room temperature. The primary antibody (ab46154) was added at a range of dilutions (50 µL per well) for 1 hour at room temperature. Ab97080 (Goat Anti-Rabbit IgG H&L-HRP) was used as a secondary antibody at 1:50.000 dilution for 1 hour at room temperature and signal was developed with TMB substrate.



All lanes : Anti-VEGFA antibody (ab46154) at 1 µg/ml

Lane 1 : Recombinant Human VEGFA protein (His tag)
(**ab204773**)

Lane 2 : Recombinant mouse VEGFA protein (Active) (**ab185265**)

Lysates/proteins at 0.1 µg per lane.

Secondary

All lanes : Rabbit IgG secondary antibody at 1/10000 dilution

Developed using the ECL technique.

Performed under reducing conditions.

Predicted band size: 27 kDa

Observed band size: 23 kDa

Exposure time: 10 seconds

This blot was produced using a 10% Bis-tris gel under the MES buffer system. The gel was run at 200V for 35 minutes before being transferred onto a Nitrocellulose membrane at 30V for 70 minutes. The membrane was then blocked for an hour using 3% Milk before being incubated with ab46154 overnight at 4°C. Antibody binding was detected using an anti-rabbit antibody conjugated to HRP, and visualised using ECL development solution.

Please note: All products are "FOR RESEARCH USE ONLY. NOT FOR USE IN DIAGNOSTIC PROCEDURES"

Our Abpromise to you: Quality guaranteed and expert technical support

- Replacement or refund for products not performing as stated on the datasheet
- Valid for 12 months from date of delivery
- Response to your inquiry within 24 hours
- We provide support in Chinese, English, French, German, Japanese and Spanish
- Extensive multi-media technical resources to help you
- We investigate all quality concerns to ensure our products perform to the highest standards

If the product does not perform as described on this datasheet, we will offer a refund or replacement. For full details of the Abpromise, please visit <https://www.abcam.co.jp/abpromise> or contact our technical team.

Terms and conditions

- Guarantee only valid for products bought direct from Abcam or one of our authorized distributors