

Anti-VEGF Receptor 3 antibody ab27278

★★★★★ [8 Abreviews](#) [44 References](#) [画像数 4](#)

製品の概要

製品名	Anti-VEGF Receptor 3 antibody
製品の詳細	Rabbit polyclonal to VEGF Receptor 3
由来種	Rabbit
アプリケーション	適用あり: ICC/IF, WB, IHC-P, IHC - Wholmount
種交差性	交差種: Mouse, Rat, Human
免疫原	Synthetic peptide within Human VEGF Receptor 3 aa 1250-1350. The exact sequence is proprietary. Database link: P35916
ポジティブ・コントロール	IHC-P: Human placenta tissue. ICC/IF: HeLa cells. WB: Hey cell lysate.
特記事項	This product is FOR RESEARCH USE ONLY. For commercial use, please contact partnerships@abcam.com. The Life Science industry has been in the grips of a reproducibility crisis for a number of years. Abcam is leading the way in addressing this with our range of recombinant monoclonal antibodies and knockout edited cell lines for gold-standard validation. Please check that this product meets your needs before purchasing. If you have any questions, special requirements or concerns, please send us an inquiry and/or contact our Support team ahead of purchase. Recommended alternatives for this product can be found below, along with publications, customer reviews and Q&As

製品の特性

製品の状態	Liquid
保存方法	Shipped at 4°C. Upon delivery aliquot and store at -20°C. Avoid freeze / thaw cycles.
バッファー	pH: 7.60 Preservative: 0.1% Sodium azide Constituents: PBS, 1% BSA
精製度	Immunogen affinity purified
ポリ/モノ	ポリクローナル
アイソタイプ	IgG

アプリケーション

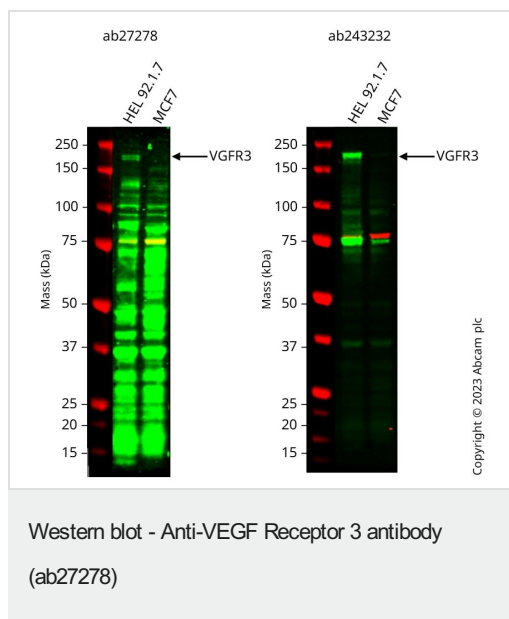
The Abpromise guarantee Abpromise保証は、 次のテスト済みアプリケーションにおけるab27278の使用に適用されます
アプリケーションノートには、推奨の開始希釈率がありますが、適切な希釈率につきましてはご確認ください。

アプリケーション	Abreviews	特記事項
ICC/IF		Use a concentration of 1 µg/ml.
WB	★★★★★ (1)	Use at an assay dependent concentration. Predicted molecular weight: 146 kDa.
IHC-P	★★★★★ (5)	1/100. Perform heat mediated antigen retrieval before commencing with IHC staining protocol.
IHC - Wholemount	★★★★★ (1)	Use at an assay dependent concentration.

ターゲット情報

機能	Receptor for VEGFC. Has a tyrosine-protein kinase activity.
組織特異性	Placenta, lung, heart, and kidney, does not seem to be expressed in pancreas and brain.
関連疾患	Defects in FLT4 are the cause of lymphedema hereditary type 1A (LMPH1A) [MIM:153100]; also known as Nonne-Milroy lymphedema or Milroy disease. Hereditary lymphedema is a chronic disabling condition which results in swelling of the extremities due to altered lymphatic flow. Patients with lymphedema suffer from recurrent local infections and physical impairment. Note=Defects in FLT4 are found in juvenile hemangioma. Juvenile hemangiomas are the most common tumors of infancy, occurring as many as 10% of all births. These benign vascular lesions enlarge rapidly during the first year of life by hyperplasia of endothelial cells and attendant pericytes, and then spontaneously involute over a period of years, leaving loose fibrofatty tissue.
配列類似性	Belongs to the protein kinase superfamily. Tyr protein kinase family. CSF-1/PDGF receptor subfamily. Contains 7 Ig-like C2-type (immunoglobulin-like) domains. Contains 1 protein kinase domain.
細胞内局在	Membrane.

画像



All lanes : Anti-VEGF Receptor 3 antibody (ab27278) at 1/1000 dilution

Lane 1 : HEL 92.1.7 cell lysate

Lane 2 : MCF7 cell lysate

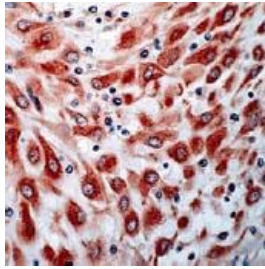
Lysates/proteins at 20 µg per lane.

Performed under reducing conditions.

Predicted band size: 146 kDa

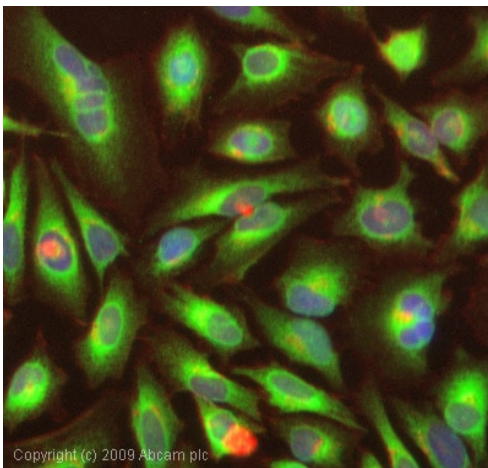
Observed band size: 200 kDa

Anti-FLT4 antibody (ab27278) staining at 1/1000 dilution, shown in green; Mouse anti-CANX [CANX/1543] ([ab238078](#)) loading control staining at 1/20000 dilution, shown in red. In Western blot, ab27278 was shown to bind specifically to FLT4 but with several non-specific bands. We recommend [ab243232](#) for Western blot. First, samples were run on an SDS-PAGE gel then transferred onto a nitrocellulose membrane. Membranes were blocked in 3 % milk in TBS-0.1 % Tween® 20 (TBS-T) before incubation with primary antibodies overnight at 4 °C. Blots were washed four times in TBS-T, incubated with secondary antibodies for 1 h at room temperature, washed again four times then imaged. Secondary antibodies used were Goat anti-Rabbit IgG H&L 800CW and Goat anti-Mouse IgG H&L 680RD at 1/20000 dilution.



Immunohistochemistry (Formalin/PFA-fixed paraffin-embedded sections) - Anti-VEGF Receptor 3 antibody (ab27278)

Ab27278 at a dilution of 1/100, staining formalin fixed paraffin embedded Flt4 in human placenta by Immunohistochemistry.



Immunocytochemistry/ Immunofluorescence - Anti-VEGF Receptor 3 antibody (ab27278)

ICC/IF image of ab27278 stained HeLa cells. The cells were 4% PFA fixed (10 min) and then incubated in 1%BSA / 10% normal goat serum / 0.3M glycine in 0.1% PBS-Tween for 1h to permeabilise the cells and block non-specific protein-protein interactions. The cells were then incubated with the antibody (ab27278, 1µg/ml) overnight at +4°C. The secondary antibody (green) was Alexa Fluor® 488 goat anti-rabbit IgG (H+L) used at a 1/1000 dilution for 1h. Alexa Fluor® 594 WGA was used to label plasma membranes (red) at a 1/200 dilution for 1h. DAPI was used to stain the cell nuclei (blue) at a concentration of 1.43µM.



Western blot - Anti-VEGF Receptor 3 antibody (ab27278)

Anti-VEGF Receptor 3 antibody (ab27278) at 1/50 dilution

Predicted band size: 146 kDa

Observed band size: 170,200 kDa

Hey cell lysate (50µg/lane) was used. The antibody was diluted at 1:50 for 2 hours at room temperature. Hey cell lysate (50µg/lane) was used. The antibody was diluted at 1:50 for 2 hours at room temperature. The protein is heavily glycosylated and this might explain the increase in MW above the predicted MW as well as the multiple bands.

Please note: All products are "FOR RESEARCH USE ONLY. NOT FOR USE IN DIAGNOSTIC PROCEDURES"

Our Abpromise to you: Quality guaranteed and expert technical support

- Replacement or refund for products not performing as stated on the datasheet
- Valid for 12 months from date of delivery
- Response to your inquiry within 24 hours

- We provide support in Chinese, English, French, German, Japanese and Spanish
- Extensive multi-media technical resources to help you
- We investigate all quality concerns to ensure our products perform to the highest standards

If the product does not perform as described on this datasheet, we will offer a refund or replacement. For full details of the Abpromise, please visit <https://www.abcam.co.jp/abpromise> or contact our technical team.

Terms and conditions

- Guarantee only valid for products bought direct from Abcam or one of our authorized distributors