


# Anti-VEGF Receptor 2 (phospho Y951) antibody ab110213

画像数 2

## 製品の概要

製品名	Anti-VEGF Receptor 2 (phospho Y951) antibody
製品の詳細	Rabbit polyclonal to VEGF Receptor 2 (phospho Y951)
由来種	Rabbit
特異性	From Jan 2024, QC testing of replenishment batches of this polyclonal changed. All tested and expected application and reactive species combinations are still covered by our Abcam product promise. However, we no longer test all applications. For more information on a specific batch, please contact our Scientific Support who will be happy to help.
アプリケーション	適用あり: WB, ELISA
種交差性	<p>交差種: Human</p> <p>交差が予測される動物種: Chimpanzee, Macaque monkey, Gorilla, Orangutan </p>
免疫原	Synthetic peptide. This information is proprietary to Abcam and/or its suppliers.
ポジティブ・コントロール	This antibody gave a positive signal in A431 EGF Treated whole cell lysate.
特記事項	<p>The Life Science industry has been in the grips of a reproducibility crisis for a number of years. Abcam is leading the way in addressing this with our range of recombinant monoclonal antibodies and knockout edited cell lines for gold-standard validation. Please check that this product meets your needs before purchasing.</p> <p>If you have any questions, special requirements or concerns, please send us an inquiry and/or contact our Support team ahead of purchase. Recommended alternatives for this product can be found below, along with publications, customer reviews and Q&amp;As</p>

## 製品の特性

製品の状態	Liquid
保存方法	Shipped at 4°C. Store at +4°C short term (1-2 weeks). Upon delivery aliquot. Store at -20°C or -80°C. Avoid freeze / thaw cycle.
バッファー	<p>pH: 7.40</p> <p>Preservative: 0.02% Sodium azide</p> <p>Constituent: PBS</p> <p>Batches of this product that have a concentration &lt; 1mg/ml may have BSA added as a stabilising agent. If you would like information about the formulation of a specific lot, please contact our</p>

	scientific support team who will be happy to help.
精製度	Immunogen affinity purified
ポリ/モノ	ポリクローナル
アイソタイプ	IgG

## アプリケーション

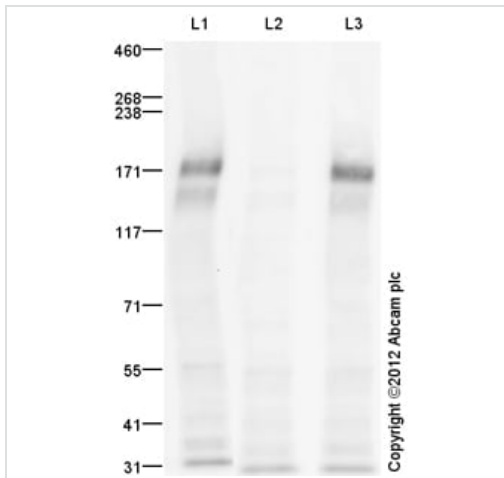
**The Abpromise guarantee**      **Abpromise保証は、**次のテスト済みアプリケーションにおけるab110213の使用に適用されます  
アプリケーションノートには、推奨の開始希釈率がありますが、適切な希釈率につきましてはご検討ください。

アプリケーション	Abreviews	特記事項
WB		Use a concentration of 1 µg/ml. Detects a band of approximately 175 kDa (predicted molecular weight: 151 kDa).
ELISA		Use at an assay dependent concentration.

## ターゲット情報

機能	Receptor for VEGF or VEGFC. Has a tyrosine-protein kinase activity. The VEGF-kinase ligand/receptor signaling system plays a key role in vascular development and regulation of vascular permeability. In case of HIV-1 infection, the interaction with extracellular viral Tat protein seems to enhance angiogenesis in Kaposi's sarcoma lesions.
関連疾患	Defects in KDR are associated with susceptibility to hemangioma capillary infantile (HCI) [MIM:602089]. HCI are benign, highly proliferative lesions involving aberrant localized growth of capillary endothelium. They are the most common tumor of infancy, occurring in up to 10% of all births. Hemangiomas tend to appear shortly after birth and show rapid neonatal growth for up to 12 months characterized by endothelial hypercellularity and increased numbers of mast cells. This phase is followed by slow involution at a rate of about 10% per year and replacement by fibrofatty stroma.
配列類似性	Belongs to the protein kinase superfamily. Tyr protein kinase family. CSF-1/PDGF receptor subfamily. Contains 7 Ig-like C2-type (immunoglobulin-like) domains. Contains 1 protein kinase domain.
翻訳後修飾	Phosphorylated. Dephosphorylated by PTPRB. Dephosphorylated by PTPRJ at Tyr-951, Tyr-996, Tyr-1054, Tyr-1059, Tyr-1175 and Tyr-1214.
細胞内局在	Membrane.

## 画像



Western blot - Anti-VEGF Receptor 2 (phospho Y951) antibody (ab110213)

**All lanes :** Anti-VEGF Receptor 2 (phospho Y951) antibody (ab110213) at 1 µg/ml

**Lane 1 :** EGF-Stimulated A431 Whole Cell Lysate

**Lane 2 :** EGF-Stimulated A431 Whole Cell Lysate with Immunising peptide at 1 µg/ml

**Lane 3 :** EGF-Stimulated A431 Whole Cell Lysate with Control peptide at 1 µg/ml

Lysates/proteins at 10 µg per lane.

### Secondary

**All lanes :** Goat Anti-Rabbit IgG H&L (HRP) preadsorbed ([ab97080](#)) at 1/5000 dilution

Developed using the ECL technique.

Performed under reducing conditions.

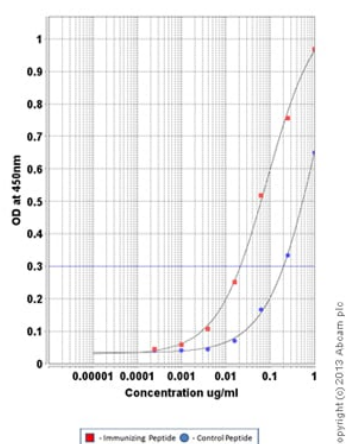
**Predicted band size:** 151 kDa

**Observed band size:** 151,175 kDa

**Additional bands at:** 30 kDa. We are unsure as to the identity of these extra bands.

**Exposure time:** 8 minutes

VEGF Receptor 2 contains a number of potential glycosylation sites (SwissProt) which may explain its migration at a higher molecular weight than predicted.



ELISA - Anti-VEGF Receptor 2 (phospho Y951)  
antibody (ab110213)

ab110213 was tested using an Indirect ELISA approach. The wells were coated with peptide (1 µg/ml at 100 µl/well) overnight at 4°C, followed by a 5% BSA blocking step for 1 hour at room temperature. The primary Ab was then added at a dilution range of 1- 0.00025 µg/ml (100 µl/well) for 1 hr at room temperature. A HRP-conjugated anti-rabbit IgG (heavy and light chain) was used as a secondary antibody at 1:20,000 dilution for 1 hr at room temperature.

**Please note:** All products are "FOR RESEARCH USE ONLY. NOT FOR USE IN DIAGNOSTIC PROCEDURES"

### Our Abpromise to you: Quality guaranteed and expert technical support

- Replacement or refund for products not performing as stated on the datasheet
- Valid for 12 months from date of delivery
- Response to your inquiry within 24 hours
- We provide support in Chinese, English, French, German, Japanese and Spanish
- Extensive multi-media technical resources to help you
- We investigate all quality concerns to ensure our products perform to the highest standards

If the product does not perform as described on this datasheet, we will offer a refund or replacement. For full details of the Abpromise, please visit <https://www.abcam.co.jp/abpromise> or contact our technical team.

### Terms and conditions

- Guarantee only valid for products bought direct from Abcam or one of our authorized distributors