


Anti-VEGF Receptor 2 antibody ab39638

★★★★★ **3 Abreviews** **21 References** 画像数 6

製品の概要

製品名	Anti-VEGF Receptor 2 antibody
製品の詳細	Rabbit polyclonal to VEGF Receptor 2
由来種	Rabbit
アプリケーション	適用あり: ICC/IF, WB, IHC-P
種交差性	交差種: Rat, Human 交差が予測される動物種: Mouse 
免疫原	The antiserum was produced against synthesized non-phosphopeptide derived from human VEGF Receptor 2 around the phosphorylation site of tyrosine 951.
ポジティブ・コントロール	WB: SK-OV3 cell lysate. IHC-P: Human brain tissue and stomach cancer tissue; Rat spinal cord tissue. ICC/IF: HepG2 cells.
特記事項	<p>The Life Science industry has been in the grips of a reproducibility crisis for a number of years. Abcam is leading the way in addressing this with our range of recombinant monoclonal antibodies and knockout edited cell lines for gold-standard validation. Please check that this product meets your needs before purchasing.</p> <p>If you have any questions, special requirements or concerns, please send us an inquiry and/or contact our Support team ahead of purchase. Recommended alternatives for this product can be found below, along with publications, customer reviews and Q&As</p>

製品の特性

製品の状態	Liquid
保存方法	Shipped at 4°C. Upon delivery aliquot and store at -20°C. Avoid freeze / thaw cycles.
バッファー	pH: 7.40 Preservative: 0.02% Sodium azide Constituents: PBS, 50% Glycerol, 0.87% Sodium chloride Without Mg2+ and Ca2+
精製度	Immunogen affinity purified
特記事項 (精製)	This antibody was affinity purified from rabbit antiserum by affinity chromatography using epitope specific immunogen.
ポリ/モノ	ポリクローナル

アプリケーション

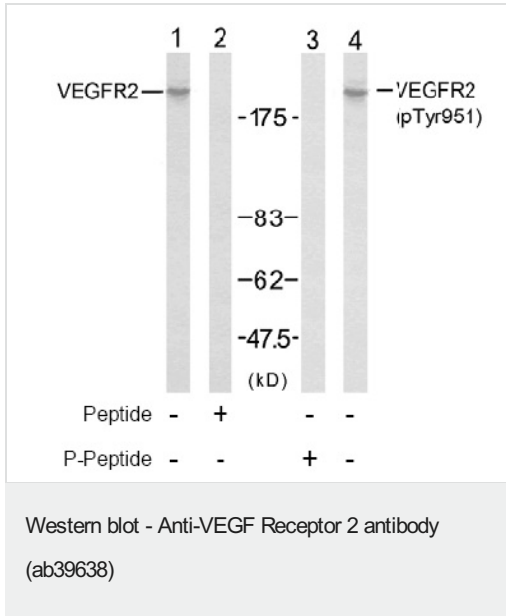
The Abpromise guarantee Abpromise保証は、次のテスト済みアプリケーションにおけるab39638の使用に適用されます
 アプリケーションノートには、推奨の開始希釈率がありますが、適切な希釈率につきましてはご検討ください。

アプリケーション	Abreviews	特記事項
ICC/IF	★★★★★ (1)	Use a concentration of 1 µg/ml.
WB	★★★★★ (1)	1/500 - 1/1000. Predicted molecular weight: 151 kDa.
IHC-P	★★★★★ (1)	1/50 - 1/100.

ターゲット情報

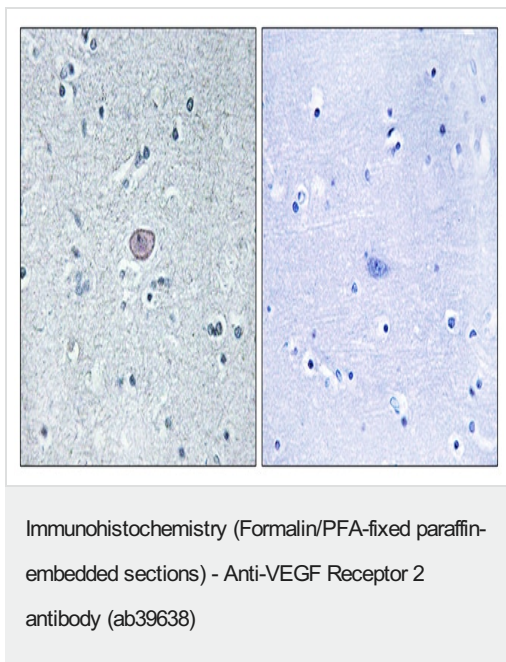
機能	Receptor for VEGF or VEGFC. Has a tyrosine-protein kinase activity. The VEGF-kinase ligand/receptor signaling system plays a key role in vascular development and regulation of vascular permeability. In case of HIV-1 infection, the interaction with extracellular viral Tat protein seems to enhance angiogenesis in Kaposi's sarcoma lesions.
関連疾患	Defects in KDR are associated with susceptibility to hemangioma capillary infantile (HCI) [MIM:602089]. HCI are benign, highly proliferative lesions involving aberrant localized growth of capillary endothelium. They are the most common tumor of infancy, occurring in up to 10% of all births. Hemangiomas tend to appear shortly after birth and show rapid neonatal growth for up to 12 months characterized by endothelial hypercellularity and increased numbers of mast cells. This phase is followed by slow involution at a rate of about 10% per year and replacement by fibrofatty stroma.
配列類似性	Belongs to the protein kinase superfamily. Tyr protein kinase family. CSF-1/PDGF receptor subfamily. Contains 7 Ig-like C2-type (immunoglobulin-like) domains. Contains 1 protein kinase domain.
翻訳後修飾	Phosphorylated. Dephosphorylated by PTPRB. Dephosphorylated by PTPRJ at Tyr-951, Tyr-996, Tyr-1054, Tyr-1059, Tyr-1175 and Tyr-1214.
細胞内局在	Membrane.

画像

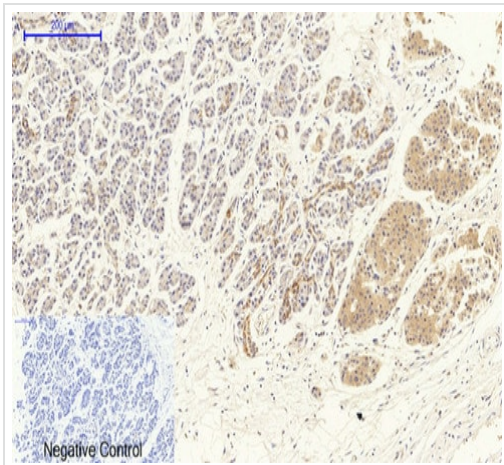


Western blot analysis of extracts from SK-OV3 cells using VEGF Receptor 2 antibody ab39638 (Lane 1 and 2) and VEGF Receptor 2 (phospho-Tyr951) antibody (Lane 3 and 4).

Secondary antibody - **anti-rabbit HRP (ab6721)**

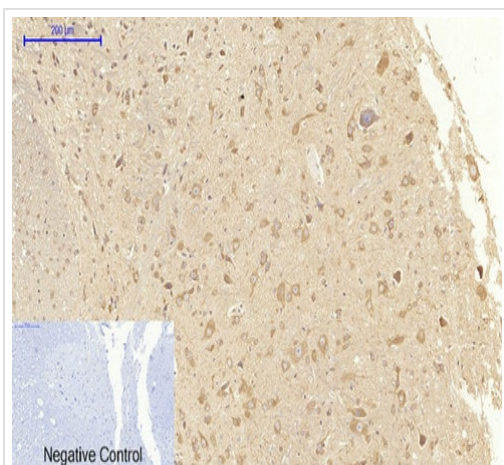


Immunohistochemical analysis of human brain tissue stained with ab39638. The image on the right is blocked with the synthesized peptide.



Immunohistochemistry (Formalin/PFA-fixed paraffin-embedded sections) - Anti-VEGF Receptor 2 antibody (ab39638)

Immunohistochemical analysis of human stomach cancer tissue stained with ab39638 at 1/200 dilution at 4°C overnight. The negative control was secondary antibody only.



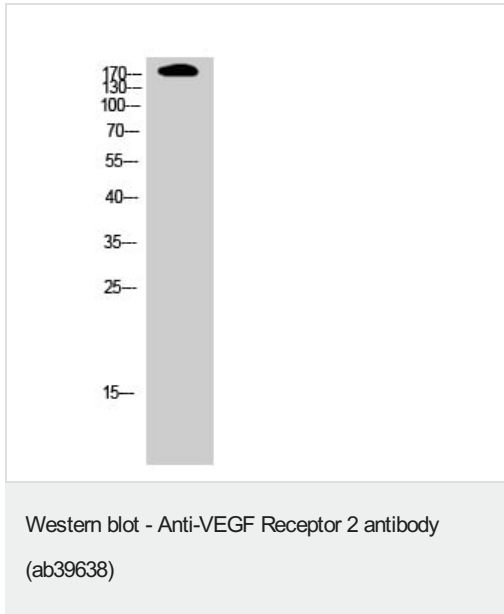
Immunohistochemistry (Formalin/PFA-fixed paraffin-embedded sections) - Anti-VEGF Receptor 2 antibody (ab39638)

Immunohistochemical analysis of rat spinal cord tissue stained with ab39638 at 1/200 dilution at 4°C overnight. The negative control was secondary antibody only.

Immunocytochemistry/ Immunofluorescence - Anti-VEGF Receptor 2 antibody (ab39638)

ICC/IF image of ab39638 stained HepG2 cells. The cells were 4% PFA fixed (10 min) and then incubated in 1%BSA / 10% normal goat serum / 0.3M glycine in 0.1% PBS-Tween for 1h to permeabilise the cells and block non-specific protein-protein interactions. The cells were then incubated with the antibody (ab39638, 1μg/ml) overnight at +4°C. The secondary antibody

(green) was Alexa Fluor® 488 goat anti-rabbit IgG (H+L) used at a 1/1000 dilution for 1h. Alexa Fluor® 594 WGA was used to label plasma membranes (red) at a 1/200 dilution for 1h. DAPI was used to stain the cell nuclei (blue) at a concentration of 1.43µM.



Anti-VEGF Receptor 2 antibody (ab39638) (Anti-VEGF Receptor 2 antibody) + HeLa cell lysate

Predicted band size: 151 kDa

Please note: All products are "FOR RESEARCH USE ONLY. NOT FOR USE IN DIAGNOSTIC PROCEDURES"

Our Abpromise to you: Quality guaranteed and expert technical support

- Replacement or refund for products not performing as stated on the datasheet
- Valid for 12 months from date of delivery
- Response to your inquiry within 24 hours
- We provide support in Chinese, English, French, German, Japanese and Spanish
- Extensive multi-media technical resources to help you
- We investigate all quality concerns to ensure our products perform to the highest standards

If the product does not perform as described on this datasheet, we will offer a refund or replacement. For full details of the Abpromise, please visit <https://www.abcam.co.jp/abpromise> or contact our technical team.

Terms and conditions

- Guarantee only valid for products bought direct from Abcam or one of our authorized distributors