


Anti-Utrophin antibody ab95443

★☆☆☆☆ [1 Abreviews](#) [1 References](#) [画像数 1](#)

製品の概要

製品名	Anti-Utrophin antibody
製品の詳細	Rabbit polyclonal to Utrophin
由来種	Rabbit
アプリケーション	適用あり: WB
種交差性	交差種: Human 交差が予測される動物種: Dog 
免疫原	Synthetic peptide corresponding to Human Utrophin aa 800-900 conjugated to keyhole limpet haemocyanin. (Peptide available as ab107901)
ポジティブ・コントロール	This antibody gave a positive signal in Human Skeletal muscle tissue.
特記事項	<p>The Life Science industry has been in the grips of a reproducibility crisis for a number of years. Abcam is leading the way in addressing this with our range of recombinant monoclonal antibodies and knockout edited cell lines for gold-standard validation. Please check that this product meets your needs before purchasing.</p> <p>If you have any questions, special requirements or concerns, please send us an inquiry and/or contact our Support team ahead of purchase. Recommended alternatives for this product can be found below, along with publications, customer reviews and Q&As</p>

製品の特性

製品の状態	Liquid
保存方法	Shipped at 4°C. Store at +4°C short term (1-2 weeks). Upon delivery aliquot. Store at -20°C or -80°C. Avoid freeze / thaw cycle.
バッファー	pH: 7.40 Preservative: 0.02% Sodium azide Constituent: PBS
精製度	Batches of this product that have a concentration < 1mg/ml may have BSA added as a stabilising agent. If you would like information about the formulation of a specific lot, please contact our scientific support team who will be happy to help. Immunogen affinity purified

ポリ/モノ	ポリクローナル
アイソタイプ	IgG

アプリケーション

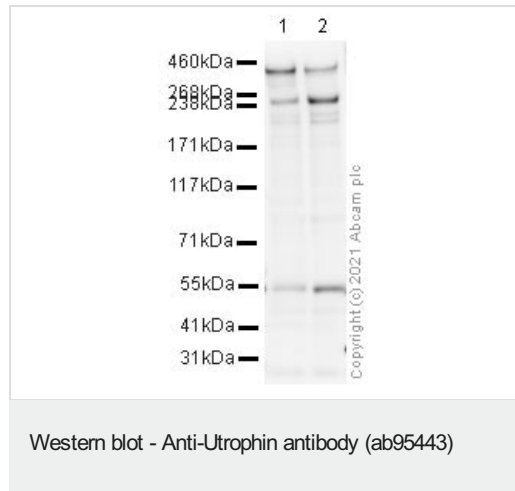
The Abpromise guarantee **Abpromise保証は、** 次のテスト済みアプリケーションにおけるab95443の使用に適用されます
 アプリケーションノートには、推奨の開始希釈率がありますが、適切な希釈率につきましてはご確認ください。

アプリケーション	Abreviews	特記事項
WB		Use a concentration of 1 µg/ml. Detects a band of approximately 394 kDa (predicted molecular weight: 394 kDa).

ターゲット情報

機能	May play a role in anchoring the cytoskeleton to the plasma membrane.
組織特異性	Muscle.
配列類似性	Contains 2 CH (calponin-homology) domains. Contains 20 spectrin repeats. Contains 1 WW domain. Contains 1 ZZ-type zinc finger.
細胞内局在	Cell junction > synapse > postsynaptic cell membrane. Cytoplasm > cytoskeleton. Neuromuscular junction.

画像



All lanes : Anti-Utrophin antibody (ab95443) at 1 µg/ml

Lane 1 : Caco-2 whole cell lysate with BSA

Lane 2 : HepG2 whole cell lysate with BSA

Lysates/proteins at 10 µg per lane.

Blocking peptides at 2 % per lane.

Secondary

All lanes : Goat polyclonal to Rabbit IgG - H&L - Pre-Adsorbed (HRP) at 1/50000 dilution

Predicted band size: 394 kDa

Observed band size: 394 kDa

Additional bands at: 260 kDa (possible non-specific binding)

Exposure time: 12 minutes

This blot was produced using a 3-8% Tris Acetate gel under the TA buffer system. The gel was run at 150V for 60 minutes before being transferred onto a Nitrocellulose membrane at 30V for 70 minutes. The membrane was then blocked for an hour using 2% Bovine Serum Albumin before being incubated with ab95443 overnight at 4°C. Antibody binding was detected using an anti-rabbit/mouse antibody conjugated to HRP, and visualised using ECL development solution **ab133406**.

Please note: All products are "FOR RESEARCH USE ONLY. NOT FOR USE IN DIAGNOSTIC PROCEDURES"

Our Abpromise to you: Quality guaranteed and expert technical support

- Replacement or refund for products not performing as stated on the datasheet
- Valid for 12 months from date of delivery
- Response to your inquiry within 24 hours
- We provide support in Chinese, English, French, German, Japanese and Spanish
- Extensive multi-media technical resources to help you
- We investigate all quality concerns to ensure our products perform to the highest standards

If the product does not perform as described on this datasheet, we will offer a refund or replacement. For full details of the Abpromise, please visit **<https://www.abcam.co.jp/abpromise>** or contact our technical team.

Terms and conditions

- Guarantee only valid for products bought direct from Abcam or one of our authorized distributors