

Anti-UTF1 antibody ab24273

★★★★☆ **6 Abreviews** **18 References** 画像数 2

製品の概要

製品名	Anti-UTF1 antibody
製品の詳細	Rabbit polyclonal to UTF1
由来種	Rabbit
アプリケーション	適用あり: WB, ICC/IF
種交差性	交差種: Mouse 非交差種: Human
免疫原	Synthetic peptide corresponding to Mouse UTF1 aa 300 to the C-terminus (C terminal) conjugated to keyhole limpet haemocyanin. (Peptide available as ab30369)
ポジティブ・コントロール	ICC/IF: mES cells.
特記事項	<p>The Life Science industry has been in the grips of a reproducibility crisis for a number of years. Abcam is leading the way in addressing this with our range of recombinant monoclonal antibodies and knockout edited cell lines for gold-standard validation. Please check that this product meets your needs before purchasing.</p> <p>If you have any questions, special requirements or concerns, please send us an inquiry and/or contact our Support team ahead of purchase. Recommended alternatives for this product can be found below, along with publications, customer reviews and Q&As</p>

製品の特性

製品の状態	Liquid
保存方法	Shipped at 4°C. Store at +4°C short term (1-2 weeks). Upon delivery aliquot. Store at -20°C or -80°C. Avoid freeze / thaw cycle.
バッファー	pH: 7.40 Preservative: 0.02% Sodium azide Constituent: PBS
精製度	Batches of this product that have a concentration < 1mg/ml may have BSA added as a stabilising agent. If you would like information about the formulation of a specific lot, please contact our scientific support team who will be happy to help. Immunogen affinity purified

ポリ/モノ	ポリクローナル
アイソタイプ	IgG

アプリケーション

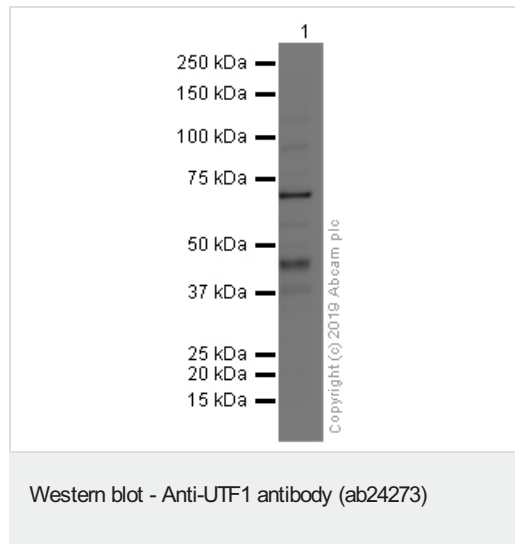
The Abpromise guarantee **Abpromise保証は、** 次のテスト済みアプリケーションにおけるab24273の使用に適用されます
 アプリケーションノートには、推奨の開始希釈率がありますが、適切な希釈率につきましてはご確認ください。

アプリケーション	Abreviews	特記事項
WB	★★★★★ (2)	Use a concentration of 1 µg/ml. Detects a band of approximately 37 kDa (predicted molecular weight: 36 kDa).
ICC/IF	★★★★★ (2)	Use a concentration of 1 µg/ml.

ターゲット情報

機能	Acts as a transcriptional coactivator of ATF2.
ドメイン	The leucine-zipper domain is required for coactivation activity. When this domain is deleted, the protein is able to stimulate transcription from a number of gene promoters.
翻訳後修飾	Phosphorylated.
細胞内局在	Nucleus.
製品の状態	UTF1 is a transcriptional coactivator expressed in pluripotent embryonic stem cells and extra-embryonic cells. Upon activation by Oct-3/4, UTF1 may be responsible for the rapid proliferation and tumorigenic properties of embryonic stem cells. Sox2 is also part of the Oct-3/4-containing complex able to bind the regulatory region of UTF1. UTF1 acts as a transcriptional coactivator of ATF2 and it binds to the N-terminal region of ATF2. Associates with the TFIIID complex through interaction with TBP.

画像



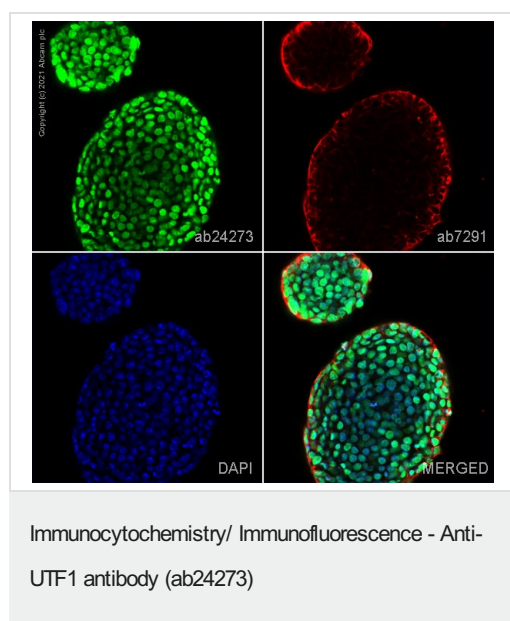
Anti-UTF1 antibody (ab24273) at 1 µg/ml + Mouse embryonic stem cell lysate at 20 µg

Secondary
 Goat polyclonal to Rabbit IgG - H&L - Pre-Adsorbed (HRP) at 1/50000 dilution

Predicted band size: 36 kDa
Observed band size: 37 kDa
Additional bands at: 46 kDa (possible post-translational modification), 72 kDa (possible non-specific binding)

Exposure time: 1 minute

This blot was produced using a 4-12% Bis-tris gel under the MOPS buffer system. The gel was run at 200V for 50 minutes before being transferred onto a Nitrocellulose membrane at 30V for 70 minutes. The membrane was then blocked for an hour using 2% Bovine Serum Albumin before being incubated with ab24273 overnight at 4°C. Antibody binding was detected using an anti-rabbit antibody conjugated to HRP, and visualised using ECL development solution **ab133406**.



ab24273 staining UTF1 in mES cells. The cells were fixed with 100% methanol (5 min), permeabilized with 0.1% PBS-Triton X-100 for 5 minutes and then blocked with 1% BSA/10% normal goat serum/0.3M glycine in 0.1% PBS-Tween for 1h. The cells were then incubated overnight at 4°C with ab24273 at 1 µg/ml and **ab7291**, Mouse monoclonal [DM1A] to alpha Tubulin - Loading Control. Cells were then incubated with **ab150081**, Goat polyclonal Secondary Antibody to Rabbit IgG - H&L (Alexa Fluor® 488), pre-adsorbed at 1/1000 dilution (shown in green) and **ab150120**, Goat polyclonal Secondary Antibody to Mouse IgG - H&L (Alexa Fluor® 594), pre-adsorbed at 1/1000 dilution (shown in pseudocolour red). Nuclear DNA was labelled with DAPI (shown in blue). Also suitable in cells fixed with 4% paraformaldehyde (10 min).

Image was acquired with a confocal microscope (Leica-Microsystems TCS SP8) and a single confocal section is shown.

Please note: All products are "FOR RESEARCH USE ONLY. NOT FOR USE IN DIAGNOSTIC PROCEDURES"

Our Abpromise to you: Quality guaranteed and expert technical support

- Replacement or refund for products not performing as stated on the datasheet
- Valid for 12 months from date of delivery
- Response to your inquiry within 24 hours
- We provide support in Chinese, English, French, German, Japanese and Spanish
- Extensive multi-media technical resources to help you
- We investigate all quality concerns to ensure our products perform to the highest standards

If the product does not perform as described on this datasheet, we will offer a refund or replacement. For full details of the Abpromise, please visit <https://www.abcam.co.jp/abpromise> or contact our technical team.

Terms and conditions

- Guarantee only valid for products bought direct from Abcam or one of our authorized distributors