


Anti-UTF1 antibody ab105090

★★★★☆ [5 Abreviews](#) [3 References](#) [画像数 2](#)

製品の概要

製品名	Anti-UTF1 antibody
製品の詳細	Rabbit polyclonal to UTF1
由来種	Rabbit
アプリケーション	適用あり: ICC/IF, WB
種交差性	交差種: Mouse 交差が予測される動物種: Rat, Cow, Human, Pig, Macaque monkey 
免疫原	Synthetic peptide corresponding to Human UTF1 aa 50-150 conjugated to keyhole limpet haemocyanin. (Peptide available as ab119167)
ポジティブ・コントロール	This antibody gave a positive signal in the following whole cell lysates: E14Tg2a; F9; IOUD2.
特記事項	<p>The Life Science industry has been in the grips of a reproducibility crisis for a number of years. Abcam is leading the way in addressing this with our range of recombinant monoclonal antibodies and knockout edited cell lines for gold-standard validation. Please check that this product meets your needs before purchasing.</p> <p>If you have any questions, special requirements or concerns, please send us an inquiry and/or contact our Support team ahead of purchase. Recommended alternatives for this product can be found below, along with publications, customer reviews and Q&As</p>

製品の特性

製品の状態	Liquid
保存方法	Shipped at 4°C. Store at +4°C short term (1-2 weeks). Upon delivery aliquot. Store at -20°C or -80°C. Avoid freeze / thaw cycle.
バッファー	pH: 7.40 Preservative: 0.02% Sodium azide Constituent: PBS
精製度	Batches of this product that have a concentration < 1mg/ml may have BSA added as a stabilising agent. If you would like information about the formulation of a specific lot, please contact our scientific support team who will be happy to help. Immunogen affinity purified

ポリ/モノ
アイソタイプ

ポリクローナル
IgG

アプリケーション

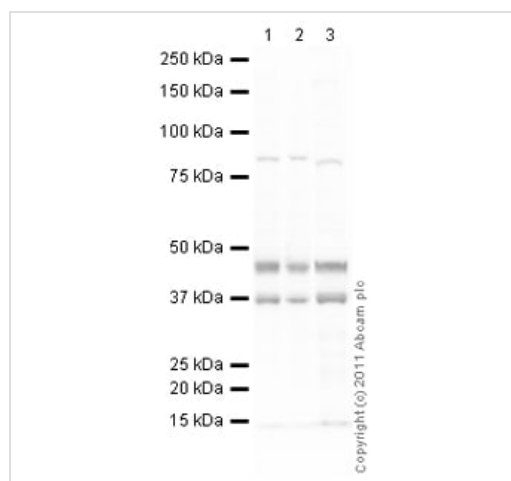
The Abpromise guarantee **Abpromise保証は、次のテスト済みアプリケーションにおけるab105090の使用に適用されず**
アプリケーションノートには、推奨の開始希釈率がありますが、適切な希釈率につきましてはご検討ください。

アプリケーション	Abreviews	特記事項
ICC/IF	★★★★☆ (2)	Use a concentration of 1 µg/ml.
WB	★★★★★ (1)	Use a concentration of 1 µg/ml. Detects a band of approximately 36 kDa (predicted molecular weight: 36 kDa).

ターゲット情報

機能	Acts as a transcriptional coactivator of ATF2.
ドメイン	The leucine-zipper domain is required for coactivation activity. When this domain is deleted, the protein is able to stimulate transcription from a number of gene promoters.
翻訳後修飾	Phosphorylated.
細胞内局在	Nucleus.
製品の状態	UTF1 is a transcriptional coactivator expressed in pluripotent embryonic stem cells and extra-embryonic cells. Upon activation by Oct-3/4, UTF1 may be responsible for the rapid proliferation and tumorigenic properties of embryonic stem cells. Sox2 is also part of the Oct-3/4-containing complex able to bind the regulatory region of UTF1. UTF1 acts as a transcriptional coactivator of ATF2 and it binds to the N-terminal region of ATF2. Associates with the TFIIID complex through interaction with TBP.

画像



Western blot - Anti-UTF1 antibody (ab105090)

All lanes : Anti-UTF1 antibody (ab105090) at 1 µg/ml

Lane 1 : E14Tg2a (Mouse embryonic stem cell line) Whole Cell Lysate

Lane 2 : F9 (Mouse embryonic carcinoma cell line) Whole Cell Lysate

Lane 3 : IOUD2 (Mouse embryonic stem cell) Whole Cell Lysate

Lysates/proteins at 10 µg per lane.

Secondary

All lanes : Goat Anti-Rabbit IgG H&L (HRP) preadsorbed (**ab97080**) at 1/5000 dilution

Developed using the ECL technique.

Performed under reducing conditions.

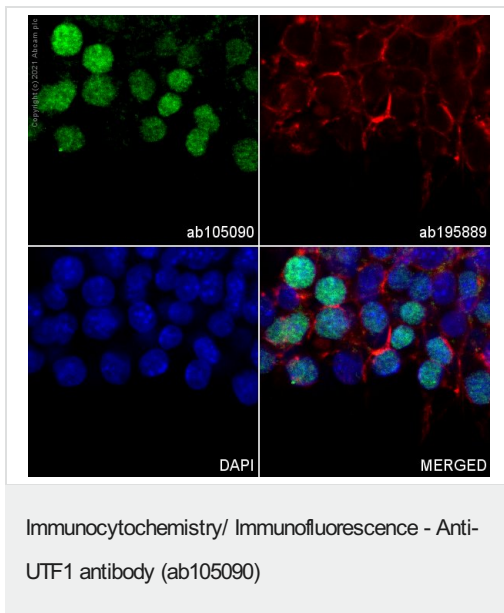
Predicted band size: 36 kDa

Observed band size: 46 kDa

Additional bands at: 36 kDa, 85 kDa. We are unsure as to the identity of these extra bands.

Exposure time: 30 seconds

The expression profile observed is consistent with what has been described in the literature (PMID:17785516).



ICC/IF image of ab105090 stained mouse embryonic stem cells. The cells were fixed with 4% PFA (10min), permeabilized in 0.1% PBS-Triton X-100 for 5 min then blocked in 1% BSA/10% normal goat serum/0.3M glycine in 0.1% PBS-Tween for 1hr. The cells were then incubated overnight at +4°C with ab105090 at 1/500 dilution and **ab195889**, Mouse monoclonal to alpha Tubulin (Alexa Fluor® 594), at 1/250 dilution (shown in red). The secondary antibody (shown in green) was **ab150081** Alexa Fluor® 488 Goat anti-Rabbit IgG (H+L) used at a 1/1000 dilution for 1h. Nuclear DNA was labelled with DAPI (shown in blue).

Image was taken with a confocal microscope (Leica-Microsystems, TCS SP8).

Please note: All products are "FOR RESEARCH USE ONLY. NOT FOR USE IN DIAGNOSTIC PROCEDURES"

Our Abpromise to you: Quality guaranteed and expert technical support

- Replacement or refund for products not performing as stated on the datasheet
- Valid for 12 months from date of delivery
- Response to your inquiry within 24 hours
- We provide support in Chinese, English, French, German, Japanese and Spanish
- Extensive multi-media technical resources to help you
- We investigate all quality concerns to ensure our products perform to the highest standards

If the product does not perform as described on this datasheet, we will offer a refund or replacement. For full details of the Abpromise,

please visit <https://www.abcam.co.jp/abpromise> or contact our technical team.

Terms and conditions

- Guarantee only valid for products bought direct from Abcam or one of our authorized distributors