

# Anti-ULP-1 antibody ab34668

### 画像数 1

#### 製品の概要

---

製品名	Anti-ULP-1 antibody
製品の詳細	Rabbit polyclonal to SpUlp1
由来種	Rabbit
アプリケーション	<b>適用あり:</b> WB, ELISA, ICC/IF
種交差性	<b>交差種:</b> <i>Saccharomyces cerevisiae</i>
免疫原	Recombinant full length protein corresponding to <i>Saccharomyces cerevisiae</i> SpUlp1 aa 1 to the C-terminus. Database link: <a href="#">Q02724</a>

#### 特記事項

The Life Science industry has been in the grips of a reproducibility crisis for a number of years. Abcam is leading the way in addressing this with our range of recombinant monoclonal antibodies and knockout edited cell lines for gold-standard validation. Please check that this product meets your needs before purchasing.

If you have any questions, special requirements or concerns, please send us an inquiry and/or contact our Support team ahead of purchase. Recommended alternatives for this product can be found below, along with publications, customer reviews and Q&As

#### 製品の特性

---

製品の状態	Liquid
保存方法	Shipped at 4°C. Upon delivery aliquot and store at -20°C. Avoid repeated freeze / thaw cycles.
バッファー	Preservative: 0.01% Sodium azide Constituents: 0.42% Potassium phosphate, 0.87% Sodium chloride
精製度	IgG fraction
特記事項(精製)	This product is an IgG fraction antibody purified from monospecific antiserum by a multi-step process including delipidation, salt fractionation and ion exchange chromatography followed by extensive dialysis against buffer.
ポリモノ	ポリクローナル
アイソタイプ	IgG

#### アプリケーション

---

## The Abpromise guarantee

**Abpromise保証は、次のテスト済みアプリケーションにおけるab34668の使用に適用されます**

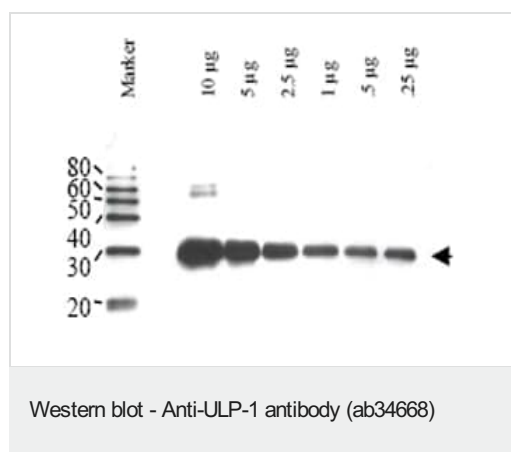
アプリケーションノートには、推奨の開始希釈率がありますが、適切な希釈率につきましてはご検討ください。

アプリケーション	Abreviews	特記事項
WB		1/500 - 1/2000. Detects a band of approximately 72.4 kDa (predicted molecular weight: 80 kDa).
ELISA		Use at an assay dependent concentration.
ICC/IF		Use at an assay dependent concentration.

## ターゲット情報

関連性	Probable centromere protein from the fission yeast ( <i>Schizosaccharomyces pombe</i> ). Similar to yeast Smt3p-specific protease, degrades conjugated ubiquitin-like protein [ <i>S. pombe</i> ].
細胞内局在	Cytoplasmic

## 画像



Anti-ULP-1 antibody (ab34668) at 1/1000 dilution +  
Saccharomyces cerevisiae truncated ULP 1 fusion protein (arrow-head) with 5% non-fat dry milk in TTBS

### Secondary

1:1,000 dilution of HRP-labeled  
Donkey anti-Rabbit IgG for 1 hour at room temperature.

**Predicted band size:** 80 kDa

Increasing concentrations of ULP 1 were run on SDS-PAGE and transferred onto nitrocellulose. A chemiluminescence system was used for signal detection (Roche) using a 3 seconds exposure time.

**Please note:** All products are "FOR RESEARCH USE ONLY. NOT FOR USE IN DIAGNOSTIC PROCEDURES"

## Our Abpromise to you: Quality guaranteed and expert technical support

- Replacement or refund for products not performing as stated on the datasheet
- Valid for 12 months from date of delivery
- Response to your inquiry within 24 hours

- We provide support in Chinese, English, French, German, Japanese and Spanish
- Extensive multi-media technical resources to help you
- We investigate all quality concerns to ensure our products perform to the highest standards

If the product does not perform as described on this datasheet, we will offer a refund or replacement. For full details of the Abpromise, please visit <https://www.abcam.co.jp/abpromise> or contact our technical team.

### **Terms and conditions**

---

- Guarantee only valid for products bought direct from Abcam or one of our authorized distributors