


Anti-UFL1 antibody ab123500

画像数 1

製品の概要

製品名	Anti-UFL1 antibody
製品の詳細	Rabbit polyclonal to UFL1
由来種	Rabbit
アプリケーション	適用あり: IP
種交差性	交差種: Human 交差が予測される動物種: Mouse, Rat, Horse, Guinea pig, Dog, Pig, Chimpanzee, Rhesus monkey, Gorilla, Orangutan 
免疫原	Synthetic peptide corresponding to Human UFL1 aa 175-225. Database link: NP_056138.1
ポジティブ・コントロール	HeLa whole cell lysate
特記事項	<p>The Life Science industry has been in the grips of a reproducibility crisis for a number of years. Abcam is leading the way in addressing this with our range of recombinant monoclonal antibodies and knockout edited cell lines for gold-standard validation. Please check that this product meets your needs before purchasing.</p> <p>If you have any questions, special requirements or concerns, please send us an inquiry and/or contact our Support team ahead of purchase. Recommended alternatives for this product can be found below, along with publications, customer reviews and Q&As</p>

製品の特性

製品の状態	Liquid
保存方法	Shipped at 4°C. Upon delivery aliquot and store at -20°C. Avoid freeze / thaw cycles.
バッファー	pH: 7.00 Preservative: 0.09% Sodium azide Constituent: 99% Tris citrate/phosphate
精製度	pH 7 to 8 Immunogen affinity purified
ポリ/モノ	ポリクローナル
アイソタイプ	IgG

アプリケーション

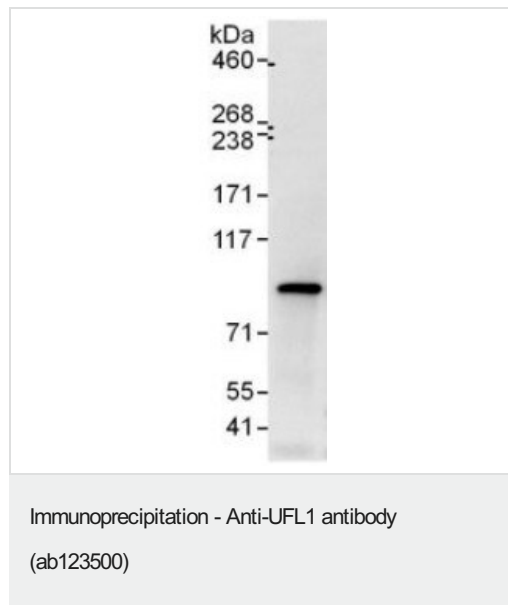
The Abpromise guarantee Abpromise保証は、次のテスト済みアプリケーションにおけるab123500の使用に適用されます
アプリケーションノートには、推奨の開始希釈率がありますが、適切な希釈率につきましてはご検討ください。

アプリケーション	Abreviews	特記事項
IP		Use at 2-10 µg/mg of lysate.

ターゲット情報

機能	E3 UFM1-protein ligase that mediates ufmylation of target proteins such as DDRGK1/C20orf116. The function of ufmylation is unknown. May act as a tumor suppressor by inhibiting cell invasion, blocking NF-kappa-B signaling and increasing stability of CDK5RAP3.
組織特異性	Ubiquitously expressed, with a high expression in liver (at protein level). Low expression in several invasive hepatocellular carcinomas, such HepG2, Hep3B, HLE and PLC.
配列類似性	Belongs to the UFL1 family.
翻訳後修飾	Ubiquitinated, leading to its degradation by the proteasome. Interaction with CDK5RAP3 protects each other against ubiquitination and degradation via the proteasome.
細胞内局在	Endoplasmic reticulum. Cytoplasm. In cytoplasm colocalizes with CDK5RAP3.

画像



Immunoprecipitation from HeLa whole cell lysate (1 mg for IP, 20% of IP loaded), using ab123500 for IP at 6 µg/mg lysate.

Subsequent Western blot detection used an antibody which recognized a downstream epitope of UFL1 at 0.4 µg/ml.

Detection: Chemiluminescence with an exposure time of 10 seconds.

Please note: All products are "FOR RESEARCH USE ONLY. NOT FOR USE IN DIAGNOSTIC PROCEDURES"

Our Abpromise to you: Quality guaranteed and expert technical support

- Replacement or refund for products not performing as stated on the datasheet

- Valid for 12 months from date of delivery
- Response to your inquiry within 24 hours

- We provide support in Chinese, English, French, German, Japanese and Spanish
- Extensive multi-media technical resources to help you
- We investigate all quality concerns to ensure our products perform to the highest standards

If the product does not perform as described on this datasheet, we will offer a refund or replacement. For full details of the Abpromise, please visit <https://www.abcam.co.jp/abpromise> or contact our technical team.

Terms and conditions

- Guarantee only valid for products bought direct from Abcam or one of our authorized distributors