


# Anti-Ubiquinol-Cytochrome C Reductase Core Protein I antibody ab96333

★★★★★ 1 Abreviews 5 References 画像数 2

医薬用外劇物

### 製品の概要

製品名	Anti-Ubiquinol-Cytochrome C Reductase Core Protein I antibody
製品の詳細	Rabbit polyclonal to Ubiquinol-Cytochrome C Reductase Core Protein I
由来種	Rabbit
アプリケーション	適用あり: WB, IHC-P
種交差性	交差種: Mouse, Human 交差が予測される動物種: Rat, Cow, Monkey 
免疫原	Recombinant fragment, corresponding to a region within amino acids 1-176 of Human Ubiquinol-Cytochrome C Reductase Core Protein I (NP_003356)
ポジティブ・コントロール	HepG2 whole cell lysate ( <a href="#">ab7900</a> ) and 293T cell lysate
特記事項	<p>The Life Science industry has been in the grips of a reproducibility crisis for a number of years. Abcam is leading the way in addressing this with our range of recombinant monoclonal antibodies and knockout edited cell lines for gold-standard validation. Please check that this product meets your needs before purchasing.</p> <p>If you have any questions, special requirements or concerns, please send us an inquiry and/or contact our Support team ahead of purchase. Recommended alternatives for this product can be found below, along with publications, customer reviews and Q&amp;As</p>

### 製品の特性

製品の状態	Liquid
保存方法	Shipped at 4°C. Upon delivery aliquot and store at -20°C or -80°C. Avoid repeated freeze / thaw cycles.
バッファー	pH: 7.00 Preservative: 0.01% Thimerosal (merthiolate) Constituents: 79.99% PBS, 20% Glycerol (glycerin, glycerine)
精製度	Immunogen affinity purified
ポリ/モノ	ポリクローナル
アイソタイプ	IgG

## アプリケーション

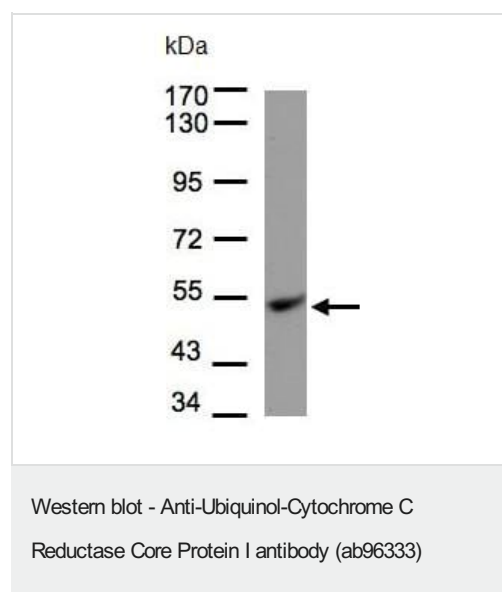
**The Abpromise guarantee**      **Abpromise保証は、** 次のテスト済みアプリケーションにおけるab96333の使用に適用されます  
アプリケーションノートには、推奨の開始希釈率がありますが、適切な希釈率につきましてはご確認ください。

アプリケーション	Abreviews	特記事項
WB		1/500 - 1/3000. Predicted molecular weight: 53 kDa.
IHC-P		1/100 - 1/1000.

## ターゲット情報

機能	This is a component of the ubiquinol-cytochrome c reductase complex (complex III or cytochrome b-c1 complex), which is part of the mitochondrial respiratory chain. This protein may mediate formation of the complex between cytochromes c and c1.
配列類似性	Belongs to the peptidase M16 family. UQCRC1/QCR1 subfamily.
細胞内局在	Mitochondrion inner membrane.

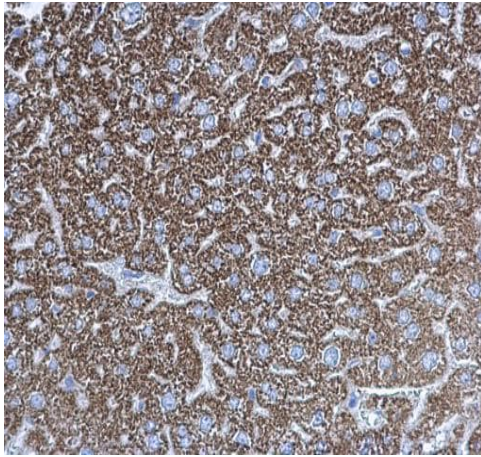
## 画像



Anti-Ubiquinol-Cytochrome C Reductase Core Protein I antibody  
(ab96333) at 1/1000 dilution + HepG2 whole cell lysate at 30 µg

**Predicted band size:** 53 kDa

7.5% SDS PAGE



Immunohistochemical analysis of PFA fixed, paraffin-embedded mouse liver tissue labeling Ubiquinol-Cytochrome C Reductase Core Protein 1 with ab96333 at 1/500 dilution.

Immunohistochemistry (Formalin/PFA-fixed paraffin-embedded sections) - Anti-Ubiquinol-Cytochrome C Reductase Core Protein I antibody (ab96333)

**Please note:** All products are "FOR RESEARCH USE ONLY. NOT FOR USE IN DIAGNOSTIC PROCEDURES"

### Our Abpromise to you: Quality guaranteed and expert technical support

---

- Replacement or refund for products not performing as stated on the datasheet
- Valid for 12 months from date of delivery
- Response to your inquiry within 24 hours
- We provide support in Chinese, English, French, German, Japanese and Spanish
- Extensive multi-media technical resources to help you
- We investigate all quality concerns to ensure our products perform to the highest standards

If the product does not perform as described on this datasheet, we will offer a refund or replacement. For full details of the Abpromise, please visit <https://www.abcam.co.jp/abpromise> or contact our technical team.

### Terms and conditions

---

- Guarantee only valid for products bought direct from Abcam or one of our authorized distributors