

# Anti-Ubiquinol-Cytochrome C Reductase Core Protein I antibody [16D10AD9AH5] ab110252

★★★★★ **1 Abreviews**   **96 References**   画像数 3

### 製品の概要

製品名	Anti-Ubiquinol-Cytochrome C Reductase Core Protein I antibody [16D10AD9AH5]
製品の詳細	Mouse monoclonal [16D10AD9AH5] to Ubiquinol-Cytochrome C Reductase Core Protein I
由来種	Mouse
アプリケーション	<b>適用あり:</b> Flow Cyt, ICC/IF, WB
種交差性	<b>交差種:</b> Mouse, Rat, Cow, Human
免疫原	Full length native protein (purified). This information is considered to be commercially sensitive.
ポジティブ・コントロール	Human, Cow, Rat or Mouse heart mitochondrial lysate, HepG2 mitochondrial lysate. This antibody gave a positive result when used in the following methanol fixed cell lines: HCT116
特記事項	<p>This antibody clone is manufactured by Abcam. If you require a custom buffer formulation or conjugation for your experiments, please contact <a href="mailto:orders@abcam.com">orders@abcam.com</a>.</p> <p>The Life Science industry has been in the grips of a reproducibility crisis for a number of years. Abcam is leading the way in addressing this with our range of recombinant monoclonal antibodies and knockout edited cell lines for gold-standard validation. Please check that this product meets your needs before purchasing.</p> <p>If you have any questions, special requirements or concerns, please send us an inquiry and/or contact our Support team ahead of purchase. Recommended alternatives for this product can be found below, along with publications, customer reviews and Q&amp;As</p> <p>Product was previously marketed under the MitoSciences sub-brand.</p>

### 製品の特性

製品の状態	Liquid
保存方法	Shipped at 4°C. Store at +4°C. Do Not Freeze.
バッファー	<p>pH: 7.5</p> <p>Preservative: 0.02% Sodium azide</p> <p>Constituent: HEPES buffered saline</p>
精製度	IgG fraction
特記事項 (精製)	ab110252 is produced in vitro using hybridomas grown in serum-free medium, and then purified

	by biochemical fractionation.
ポリ/モノ	モノクローナル
クローン名	16D10AD9AH5
アイソタイプ	IgG1
軽鎖の種類	kappa

## アプリケーション

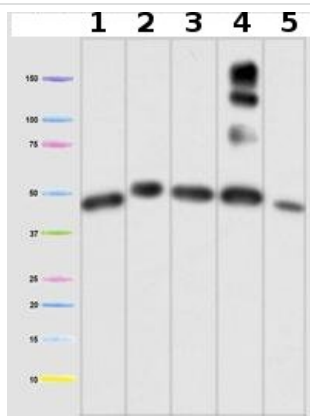
**The Abpromise guarantee** **Abpromise保証は、次のテスト済みアプリケーションにおけるab110252の使用に適用されます**  
 アプリケーションノートには、推奨の開始希釈率がありますが、適切な希釈率につきましてはご検討ください。

アプリケーション	Abreviews	特記事項
Flow Cyt		Use 1µg for 10 <sup>6</sup> cells. <b>ab170190</b> - Mouse monoclonal IgG1, is suitable for use as an isotype control with this antibody.
ICC/IF		1/50.
WB	★★★★★ (1)	Use a concentration of 0.5 µg/ml. Predicted molecular weight: 53 kDa.

## ターゲット情報

機能	This is a component of the ubiquinol-cytochrome c reductase complex (complex III or cytochrome b-c1 complex), which is part of the mitochondrial respiratory chain. This protein may mediate formation of the complex between cytochromes c and c1.
配列類似性	Belongs to the peptidase M16 family. UQCRC1/QCR1 subfamily.
細胞内局在	Mitochondrion inner membrane.

## 画像



Western blot - Anti-Ubiquinol-Cytochrome C Reductase Core Protein I antibody [16D10AD9AH5] (ab110252)

**All lanes :** Anti-Ubiquinol-Cytochrome C Reductase Core Protein I antibody [16D10AD9AH5] (ab110252) at 0.5 µg/ml

**Lane 1 :** Human heart mitochondrial lysate

**Lane 2 :** Cow heart mitochondrial lysate

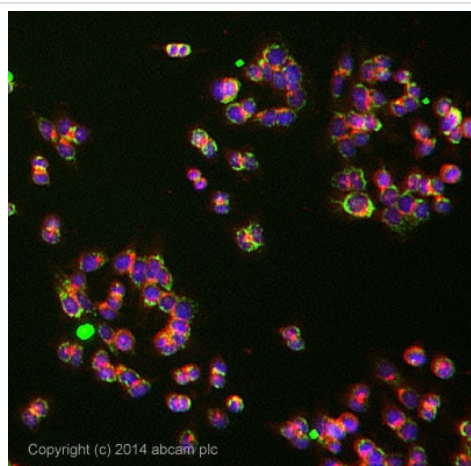
**Lane 3 :** Rat heart mitochondrial lysate

**Lane 4 :** Mouse heart mitochondrial lysate

**Lane 5 :** HepG2 mitochondrial lysate

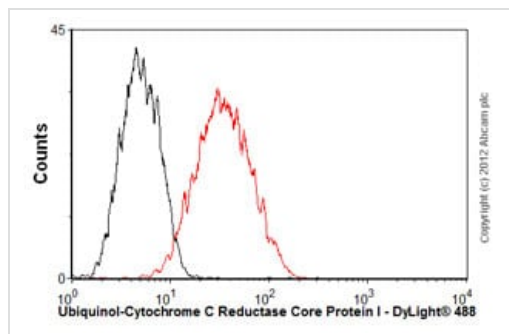
**Predicted band size:** 53 kDa

Extra bands in the Mouse sample (lane 4) are due to the reaction of the IgG-specific goat anti-mouse secondary antibody with residual mouse blood in the heart tissue, as it is very difficult to entirely remove the blood from these small organs.



Immunocytochemistry/ Immunofluorescence - Anti-Ubiquinol-Cytochrome C Reductase Core Protein I antibody [16D10AD9AH5] (ab110252)

ab110252 stained HCT116 cells. The cells were 100% methanol fixed for 5 minutes at room temperature and then incubated in 1%BSA / 10% normal goat serum / 0.3M glycine in 0.1% PBS-Tween for 1 hour at room temperature to permeabilise the cells and block non-specific protein-protein interactions. The cells were then incubated with the antibody (ab110252 at 1/50 dilution) overnight at +4°C. The secondary antibody (pseudo-colored green) was **ab150117** used at a 1/1000 dilution for 1 hour at room temperature. Alexa Fluor® 594 WGA was used to label plasma membranes (pseudo-colored red) at a 1/200 dilution for 1 hour at room temperature. DAPI was used to stain the cell nuclei (pseudo-colored blue) at a concentration of 1.43µM for 1 hour at room temperature.



Flow Cytometry - Anti-Ubiquinol-Cytochrome C Reductase Core Protein I antibody [16D10AD9AH5] (ab110252)

Overlay histogram showing HepG2 cells stained with ab110252 (red line). The cells were fixed with 80% methanol (5 min) and then permeabilized with 0.1% PBS-Tween for 20 min. The cells were then incubated in 1x PBS / 10% normal goat serum / 0.3M glycine to block non-specific protein-protein interactions. The cells were then incubated with the antibody (ab110252, 1µg/1x10<sup>6</sup> cells) for 30 min at 22°C. The secondary antibody used was DyLight® 488 goat anti-mouse IgG (H+L) (**ab96879**) at 1/500 dilution for 30 min at 22°C. Isotype control antibody (black line) was mouse IgG1 [ICIGG1] (**ab91353**, 2µg/1x10<sup>6</sup> cells) used under the same conditions. Acquisition of >5,000 events was performed.

**Please note:** All products are "FOR RESEARCH USE ONLY. NOT FOR USE IN DIAGNOSTIC PROCEDURES"

### Our Abpromise to you: Quality guaranteed and expert technical support

- Replacement or refund for products not performing as stated on the datasheet
- Valid for 12 months from date of delivery
- Response to your inquiry within 24 hours
- We provide support in Chinese, English, French, German, Japanese and Spanish
- Extensive multi-media technical resources to help you
- We investigate all quality concerns to ensure our products perform to the highest standards

If the product does not perform as described on this datasheet, we will offer a refund or replacement. For full details of the Abpromise, please visit <https://www.abcam.co.jp/abpromise> or contact our technical team.

### Terms and conditions

- Guarantee only valid for products bought direct from Abcam or one of our authorized distributors