


Anti-Ube2L3/UBCH7 antibody [EPR4368] ab108936

リコンビナント **RabMAb**

5 References [画像数 4](#)

製品の概要

製品名	Anti-Ube2L3/UBCH7 antibody [EPR4368]
製品の詳細	Rabbit monoclonal [EPR4368] to Ube2L3/UBCH7
由来種	Rabbit
アプリケーション	適用あり: ICC/IF, WB, IHC-P 適用なし: Flow Cyt
種交差性	交差種: Human 交差が予測される動物種: Mouse, Rat 
免疫原	Synthetic peptide. This information is proprietary to Abcam and/or its suppliers.
ポジティブ・コントロール	WB: HeLa, LNCaP, Jurkat and K562 cell lysates IHC-P: Human testis tissue IF: HeLa cells
特記事項	This product is a recombinant monoclonal antibody, which offers several advantages including: <ul style="list-style-type: none"> - High batch-to-batch consistency and reproducibility - Improved sensitivity and specificity - Long-term security of supply - Animal-free production For more information see here . Our RabMAb [®] technology is a patented hybridoma-based technology for making rabbit monoclonal antibodies. For details on our patents, please refer to RabMAb[®] patents .

製品の特性

製品の状態	Liquid
保存方法	Shipped at 4°C. Store at -20°C. Stable for 12 months at -20°C.
バッファー	pH: 7.20 Preservative: 0.05% Sodium azide Constituents: 0.1% BSA, 40% Glycerol (glycerin, glycerine), 9.85% Tris glycine, 50% Tissue culture supernatant
精製度	Tissue culture supernatant
ポリ/モノ	モノクローナル
クローン名	EPR4368

アイソタイプIgG

アプリケーション

The Abpromise guarantee **Abpromise保証は、** 次のテスト済みアプリケーションにおけるab108936の使用に適用されます
アプリケーションノートには、推奨の開始希釈率がありますが、適切な希釈率につきましてはご検討ください。

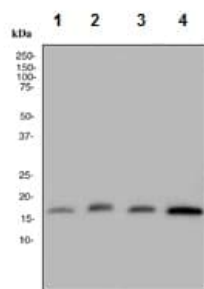
アプリケーション	Abreviews	特記事項
ICC/IF		1/100 - 1/250.
WB		1/1000 - 1/10000. Predicted molecular weight: 18 kDa.
IHC-P		1/100 - 1/250. Perform heat mediated antigen retrieval before commencing with IHC staining protocol. Heat up to 98 degrees C, below boiling, and then let cool for 10-20 min.

追加情報 Is unsuitable for Flow Cyt.

ターゲット情報

機能	Accepts ubiquitin from the E1 complex and catalyzes its covalent attachment to other proteins. In vitro catalyzes 'Lys-11'-linked polyubiquitination. Involved in the selective degradation of short-lived and abnormal proteins. Down-regulated during the S-phase it is involved in progression through the cell cycle. Regulates nuclear hormone receptors transcriptional activity. May play a role in myelopoiesis.
組織特異性	Ubiquitous, with highest expression in testis.
パスウェイ	Protein modification; protein ubiquitination.
配列類似性	Belongs to the ubiquitin-conjugating enzyme family.
翻訳後修飾	Ubiquitinated. The alteration of UBE2L3 protein levels during the S-phase of the cell cycle is due to ubiquitin-dependent proteasomal degradation.
細胞内局在	Nucleus. Cytoplasm.

画像



Western blot - Anti-Ube2L3/UBCH7 antibody
[EPR4368] (ab108936)

All lanes : Anti-Ube2L3/UBCH7 antibody [EPR4368] (ab108936)
at 1/1000 dilution

Lane 1 : HeLa cell lysate

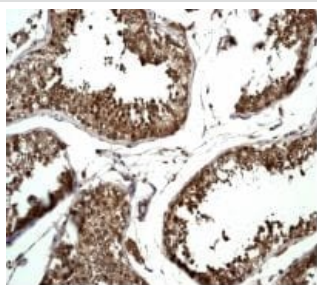
Lane 2 : LNCaP cell lysate

Lane 3 : Jurkat cell lysate

Lane 4 : K562 cell lysate

Lysates/proteins at 10 µg per lane.

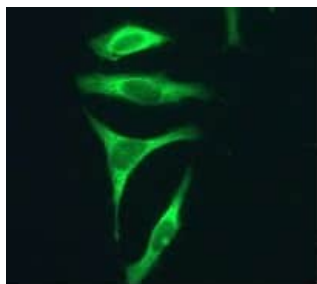
Predicted band size: 18 kDa



Immunohistochemistry (Formalin/PFA-fixed paraffin-
embedded sections) - Anti-Ube2L3/UBCH7 antibody
[EPR4368] (ab108936)

ab108936, at a 1/100 dilution, staining Ube2L3/UBCH7 in paraffin-
embedded Human testis tissue

Perform heat mediated antigen retrieval before commencing with
IHC staining protocol.



Immunocytochemistry/ Immunofluorescence - Anti-
Ube2L3/UBCH7 antibody [EPR4368] (ab108936)

ab108936, at a 1/100 dilution, staining Ube2L3/UBCH7 in HeLa
cells

Why choose a recombinant antibody?



Research with confidence
Consistent and reproducible results



Long-term and scalable supply
Recombinant technology



Success from the first experiment
Confirmed specificity



Ethical standards compliant
Animal-free production

Anti-Ube2L3/UBCH7 antibody [EPR4368]
(ab108936)

Please note: All products are "FOR RESEARCH USE ONLY. NOT FOR USE IN DIAGNOSTIC PROCEDURES"

Our Abpromise to you: Quality guaranteed and expert technical support

- Replacement or refund for products not performing as stated on the datasheet
- Valid for 12 months from date of delivery
- Response to your inquiry within 24 hours
- We provide support in Chinese, English, French, German, Japanese and Spanish
- Extensive multi-media technical resources to help you
- We investigate all quality concerns to ensure our products perform to the highest standards

If the product does not perform as described on this datasheet, we will offer a refund or replacement. For full details of the Abpromise, please visit <https://www.abcam.co.jp/abpromise> or contact our technical team.

Terms and conditions

- Guarantee only valid for products bought direct from Abcam or one of our authorized distributors