

Anti-UBE2J2 antibody ab106097

画像数 1

製品の概要

| | |
|--------------|---|
| 製品名 | Anti-UBE2J2 antibody |
| 製品の詳細 | Rabbit polyclonal to UBE2J2 |
| 由来種 | Rabbit |
| アプリケーション | 適用あり: WB |
| 種交差性 | 交差種: Human 交差が予測される動物種: Mouse, Rat, Horse, Chicken, Cow, Dog, Xenopus laevis, Macaque monkey, Opossum, Zebra finch  |
| 免疫原 | Synthetic peptide corresponding to an internal region of Human UBE2J2. |
| ポジティブ・コントロール | 293 cells over-expressing Myc-UBE2J2 |
| 特記事項 | <p>The Life Science industry has been in the grips of a reproducibility crisis for a number of years. Abcam is leading the way in addressing this with our range of recombinant monoclonal antibodies and knockout edited cell lines for gold-standard validation. Please check that this product meets your needs before purchasing.</p> <p>If you have any questions, special requirements or concerns, please send us an inquiry and/or contact our Support team ahead of purchase. Recommended alternatives for this product can be found below, along with publications, customer reviews and Q&As</p> |

製品の特性

| | |
|----------|---|
| 製品の状態 | Liquid |
| 保存方法 | Shipped at 4°C. Upon delivery aliquot and store at -20°C or -80°C. Avoid repeated freeze / thaw cycles. |
| バッファー | Preservative: 0.01% Sodium azide Constituents: 0.42% Potassium chloride, 0.88% Sodium chloride |
| 精製度 | Immunogen affinity purified |
| 特記事項(精製) | sterile filtered |
| ポリ/モノ | ポリクローナル |
| アイソタイプ | IgG |

アプリケーション

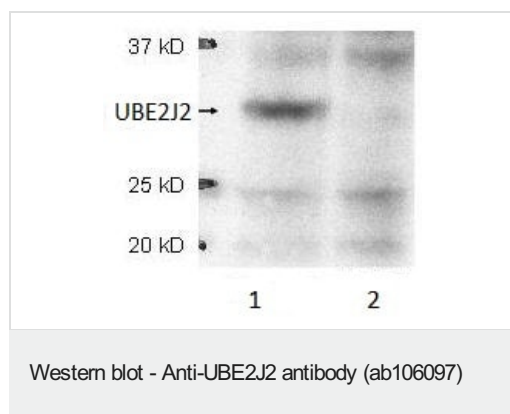
The Abpromise guarantee **Abpromise保証は、** 次のテスト済みアプリケーションにおけるab106097の使用に適用されます
 アプリケーションノートには、推奨の開始希釈率がありますが、適切な希釈率につきましてはご検討ください。

| アプリケーション | Abreviews | 特記事項 |
|----------|-----------|---|
| WB | | 1/500 - 1/3000. Predicted molecular weight: 29 kDa. |

ターゲット情報

| | |
|--------------|--|
| 機能 | Catalyzes the covalent attachment of ubiquitin to other proteins. Seems to function in the selective degradation of misfolded membrane proteins from the endoplasmic reticulum (ERAD). |
| パスウェイ | Protein modification; protein ubiquitination. |
| 配列類似性 | Belongs to the ubiquitin-conjugating enzyme family. |
| 細胞内局在 | Endoplasmic reticulum membrane. |

画像



All lanes : Anti-UBE2J2 antibody (ab106097) at 1/500 dilution

Lane 1 : 293 cells over-expressing Myc-UBE2J2

Lane 2 : lysate from mock-transfected 293 cells

Predicted band size: 29 kDa

Please note: All products are "FOR RESEARCH USE ONLY. NOT FOR USE IN DIAGNOSTIC PROCEDURES"

Our Abpromise to you: Quality guaranteed and expert technical support

- Replacement or refund for products not performing as stated on the datasheet
- Valid for 12 months from date of delivery
- Response to your inquiry within 24 hours
- We provide support in Chinese, English, French, German, Japanese and Spanish
- Extensive multi-media technical resources to help you
- We investigate all quality concerns to ensure our products perform to the highest standards

If the product does not perform as described on this datasheet, we will offer a refund or replacement. For full details of the Abpromise, please visit <https://www.abcam.co.jp/abpromise> or contact our technical team.

Terms and conditions

- Guarantee only valid for products bought direct from Abcam or one of our authorized distributors