


### Anti-UBE2E3 antibody ab66257

画像数 1

#### 製品の概要

製品名	Anti-UBE2E3 antibody
製品の詳細	Mouse polyclonal to UBE2E3
由来種	Mouse
アプリケーション	<b>適用あり:</b> WB
種交差性	<b>交差種:</b> Recombinant fragment <b>交差が予測される動物種:</b> Mouse, Rat, Horse, Chicken, Cow, Dog, Pig, Xenopus laevis, Zebrafish, Cynomolgus monkey, Rhesus monkey, Opossum 
免疫原	Recombinant fragment with tag: RIQKELAEIT LDPPPNC SAG PKGDNIYEW R STILGPPGSV YEGGVFFLDI TFSSDYPFKP PKVTFRTRY HCNINSQGV I CLDILKDN, corresponding to amino acids 65-153 of Human UBE2E3 <a href="#">Run BLAST with ExPASy</a> <a href="#">Run BLAST with NCBI</a>
ポジティブ・コントロール	Partial recombinant UBE2E3 with tag.
特記事項	<p>The Life Science industry has been in the grips of a reproducibility crisis for a number of years. Abcam is leading the way in addressing this with our range of recombinant monoclonal antibodies and knockout edited cell lines for gold-standard validation. Please check that this product meets your needs before purchasing.</p> <p>If you have any questions, special requirements or concerns, please send us an inquiry and/or contact our Support team ahead of purchase. Recommended alternatives for this product can be found below, along with publications, customer reviews and Q&amp;As</p>

#### 製品の特性

製品の状態	Liquid
保存方法	Shipped at 4°C. Upon delivery aliquot and store at -20°C. Avoid freeze / thaw cycles.
バッファー	Constituents: Whole serum, 50% Glycerol
精製度	Whole antiserum
ポリ/モノ	ポリクローナル
アイソタイプ	IgG

#### アプリケーション

The Abpromise guarantee **Abpromise保証は、次のテスト済みアプリケーションにおけるab66257の使用に適用されます**

アプリケーションノートには、推奨の開始希釈率がありますが、適切な希釈率につきましてはご検討ください。

アプリケーション	Abreviews	特記事項
WB		

#### 追加情報

ELISA: Use at an assay dependent dilution.

WB: 1/1000 - 1/2500. Predicted molecular weight: 23 kDa.

This antibody has only been tested in WB against the recombinant fragment used as immunogen. We have no data on the detection of endogenous protein.

Not yet tested in other applications.

Optimal dilutions/concentrations should be determined by the end user.

#### ターゲット情報

##### 機能

Accepts ubiquitin from the E1 complex and catalyzes its covalent attachment to other proteins. In vitro catalyzes 'Lys-11'- and 'Lys-48'-, as well as 'Lys-63'-linked polyubiquitination. Participates in the regulation of transepithelial sodium transport in renal cells. May be involved in cell growth arrest.

##### 組織特異性

Ubiquitously expressed at low levels. Highly expressed in skeletal muscle.

##### パスウェイ

Protein modification; protein ubiquitination.

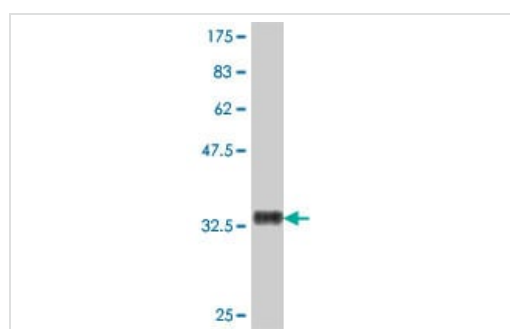
##### 配列類似性

Belongs to the ubiquitin-conjugating enzyme family.

##### 細胞内局在

Nucleus. Cytoplasm. Shuttles between the nucleus and cytoplasm in a IPO11-dependent manner.

#### 画像



Western blot - Anti-UBE2E3 antibody (ab66257)

Western blot against tagged recombinant protein immunogen using ab66257 UBE2E3 antibody at 1/1000 dilution. Predicted band size of immunogen is 36 kDa.

**Please note:** All products are "FOR RESEARCH USE ONLY. NOT FOR USE IN DIAGNOSTIC PROCEDURES"

**Our Abpromise to you: Quality guaranteed and expert technical support**

- Replacement or refund for products not performing as stated on the datasheet
- Valid for 12 months from date of delivery
- Response to your inquiry within 24 hours
  
- We provide support in Chinese, English, French, German, Japanese and Spanish
- Extensive multi-media technical resources to help you
- We investigate all quality concerns to ensure our products perform to the highest standards

If the product does not perform as described on this datasheet, we will offer a refund or replacement. For full details of the Abpromise, please visit <https://www.abcam.co.jp/abpromise> or contact our technical team.

### **Terms and conditions**

---

- Guarantee only valid for products bought direct from Abcam or one of our authorized distributors