

Anti-UBE2C antibody ab3935

3 References **画像数 2**

製品の概要

製品名	Anti-UBE2C antibody
製品の詳細	Goat polyclonal to UBE2C
由来種	Goat
アプリケーション	適用あり: WB, IP
種交差性	交差種: Human
免疫原	Synthetic peptide: QETYSKQVTSQEP, corresponding to C terminal amino acids 167-179 of Human UBE2C.

 **Run BLAST with**  **Run BLAST with** 

特記事項

The Life Science industry has been in the grips of a reproducibility crisis for a number of years. Abcam is leading the way in addressing this with our range of recombinant monoclonal antibodies and knockout edited cell lines for gold-standard validation. Please check that this product meets your needs before purchasing.

If you have any questions, special requirements or concerns, please send us an inquiry and/or contact our Support team ahead of purchase. Recommended alternatives for this product can be found below, along with publications, customer reviews and Q&As

製品の特性

製品の状態	Liquid
保存方法	Shipped at 4°C. Upon delivery aliquot and store at -20°C or -80°C. Avoid repeated freeze / thaw cycles.
バッファー	pH: 7.30 Preservative: 0.02% Sodium azide Constituents: 0.5% Tris, 0.5% BSA
精製度	Immunogen affinity purified
特記事項 (精製)	Purified from goat serum by ammonium sulphate precipitation followed by antigen affinity chromatography using the immunizing peptide.
ポリ/モノ	ポリクローナル
アイソタイプ	IgG

アプリケーション

The Abpromise guarantee

Abpromise保証は、次のテスト済みアプリケーションにおけるab3935の使用に適用されます

アプリケーションノートには、推奨の開始希釈率がありますが、適切な希釈率につきましてはご検討ください。

アプリケーション	Abreviews	特記事項
WB		Use a concentration of 2.5 µg/ml. Detects a band of approximately 20 kDa (predicted molecular weight: 21.5 kDa). A 1 hour primary incubation is recommended for this product.
IP		Use at an assay dependent concentration. (See Abreview)

ターゲット情報

機能

Accepts ubiquitin from the E1 complex and catalyzes its covalent attachment to other proteins. In vitro catalyzes 'Lys-11'- and 'Lys-48'-linked polyubiquitination. Acts as an essential factor of the anaphase promoting complex/cyclosome (APC/C), a cell cycle-regulated ubiquitin ligase that controls progression through mitosis. Acts by initiating 'Lys-11'-linked polyubiquitin chains on APC/C substrates, leading to the degradation of APC/C substrates by the proteasome and promoting mitotic exit.

パスウェイ

Protein modification; protein ubiquitination.

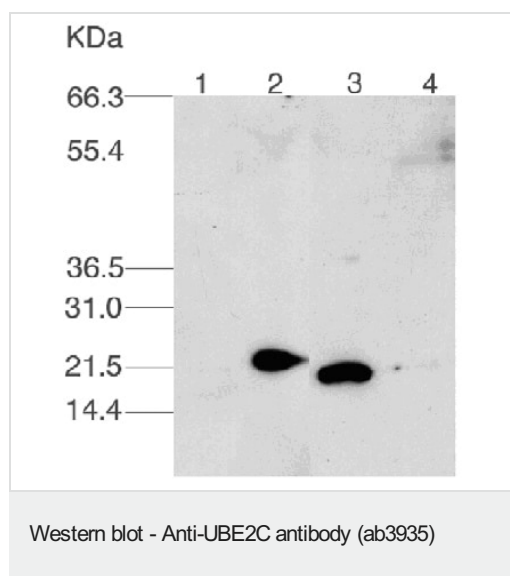
配列類似性

Belongs to the ubiquitin-conjugating enzyme family.

翻訳後修飾

Autoubiquitinated by the APC/C complex, leading to its degradation by the proteasome. Its degradation plays a central role in APC/C regulation, allowing cyclin-A accumulation before S phase entry. APC/C substrates inhibit the autoubiquitination of UBE2C/UBCH10 but not its E2 function, hence APC/C remaining active until its substrates have been destroyed.

画像



ab3935 at a 2.5µg/ml concentration staining approximately 20 kDa UBE2C by Western blot (ECL):

Lane 1 = pCDNA3 transfected U2OS whole cell lysate (2µl).

Lane 2 = pCDNA3 MycUbch10 transfected whole cell lysate (2µl).

Lane 3 = Nocodazole arrested HeLa cell whole cell lysate (20µl).

Lane 4 = Asynchronous HeLa cell whole cell lysate (20µl).

For a more detailed description, please click the reviews tab at the top of the page and see the review dated 25/02/03.

ab3935 at a 2.5µg/ml concentration staining approximately 20 kDa UBE2C by Western blot (ECL):

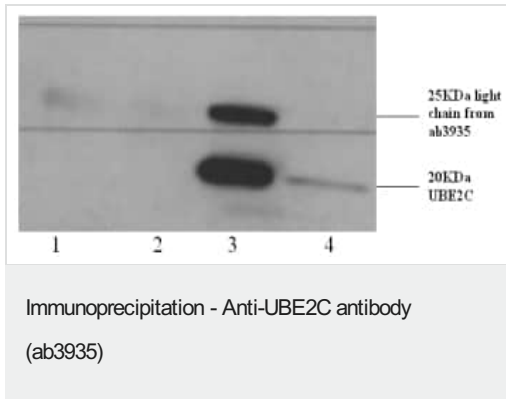
Lane 1 = pCDNA3 transfected U2OS whole cell lysate (2µl).

Lane 2 = pCDNA3 MycUbch10 transfected whole cell lysate (2µl).

Lane 3 = Nocodazole arrested HeLa cell whole cell lysate (20µl).

Lane 4 = Asynchronous HeLa cell whole cell lysate (20µl).

For a more detailed descri



ab3935 staining approximately 20 kDa human UBE2 after immunoprecipitation from HeLa whole cell lysate (10^6 cells/ml) using 40µl of ab3935 saturated protein G dynabeads, by Western blot (ECL):

Lane 1 = IP from Noc arrested HeLa cell extract (beads only).

Lane 2 = IP from Noc arrested HeLa cell extract (goat whole serum coupled to beads).

Lane 3 = IP from Noc arrested HeLa cell extract (ab3935 coupled to beads)

Lane 4 = Noc arrested HeLa whole cell lysate.

For a more detailed description, please click the reviews tab at the top of the page and see the review dated 25/02/03.

Please note: All products are "FOR RESEARCH USE ONLY. NOT FOR USE IN DIAGNOSTIC PROCEDURES"

Our Abpromise to you: Quality guaranteed and expert technical support

- Replacement or refund for products not performing as stated on the datasheet
- Valid for 12 months from date of delivery
- Response to your inquiry within 24 hours
- We provide support in Chinese, English, French, German, Japanese and Spanish
- Extensive multi-media technical resources to help you
- We investigate all quality concerns to ensure our products perform to the highest standards

If the product does not perform as described on this datasheet, we will offer a refund or replacement. For full details of the Abpromise, please visit <https://www.abcam.co.jp/abpromise> or contact our technical team.

Terms and conditions

- Guarantee only valid for products bought direct from Abcam or one of our authorized distributors