

Anti-UBAP2L antibody ab70319

7 References [画像数 2](#)

製品の概要

製品名	Anti-UBAP2L antibody
製品の詳細	Rabbit polyclonal to UBAP2L
由来種	Rabbit
アプリケーション	適用あり: WB, IP
種交差性	交差種: Human
免疫原	Synthetic peptide corresponding to a region between residues 400 and 450 of human UBAP2L (AAH03170.1).
ポジティブ・コントロール	WB: HeLa whole cell lysate; IP: HEK293T cells
特記事項	<p>The Life Science industry has been in the grips of a reproducibility crisis for a number of years. Abcam is leading the way in addressing this with our range of recombinant monoclonal antibodies and knockout edited cell lines for gold-standard validation. Please check that this product meets your needs before purchasing.</p> <p>If you have any questions, special requirements or concerns, please send us an inquiry and/or contact our Support team ahead of purchase. Recommended alternatives for this product can be found below, along with publications, customer reviews and Q&As</p>

製品の特性

製品の状態	Liquid
保存方法	Shipped at 4°C. Upon delivery aliquot and store at -20°C. Avoid freeze / thaw cycles.
バッファー	<p>pH: 7</p> <p>Preservative: 0.09% Sodium azide</p> <p>Constituents: 1.815% Tris, 1.764% Sodium citrate, 0.021% PBS</p>
精製度	Immunogen affinity purified
ポリ/モノ	ポリクローナル
アイソタイプ	IgG

アプリケーション

The Abpromise guarantee

Abpromise保証は、 次のテスト済みアプリケーションにおけるab70319の使用に適用されます

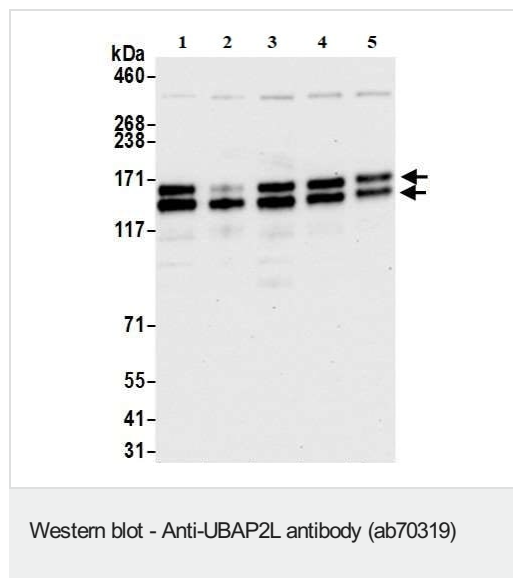
アプリケーションノートには、推奨の開始希釈率がありますが、適切な希釈率につきましてはご確認ください。

アプリケーション	Abreviews	特記事項
WB		1/10000 - 1/25000. Detects a band of approximately 160 kDa (predicted molecular weight: 115 kDa).
IP		Use at 2-10 µg/mg of lysate.

ターゲット情報

組織特異性	Ubiquitous.
配列類似性	Contains 1 UBA domain.
翻訳後修飾	Phosphorylated upon DNA damage, probably by ATM or ATR. Acetylated.

画像



All lanes : Anti-UBAP2L antibody (ab70319) at 0.04 µg/ml

Lane 1 : HEK-293T (human epithelial cell line from embryonic kidney transformed with large T antigen) whole cell lysate

Lane 2 : HeLa (human epithelial cell line from cervix adenocarcinoma) whole cell lysate

Lane 3 : Jurkat (human T cell leukemia cell line from peripheral blood) whole cell lysate

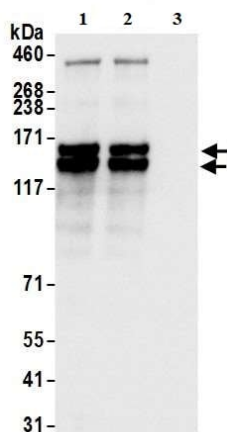
Lane 4 : K562 (human chronic myelogenous leukemia cell line from bone marrow) whole cell lysate

Lane 5 : MCF7 (human breast adenocarcinoma cell line) whole cell lysate

Lysates/proteins at 10 µg per lane.

Predicted band size: 115 kDa

Exposure time: 10 seconds



Immunoprecipitation - Anti-UBAP2L antibody
(ab70319)

UBAP2L was immunoprecipitated from HEK-293T whole cell lysate (1 mg per IP reaction, 20% loaded) with ab70319 at 6 µg per reaction. Western blot was performed on the immunoprecipitate using ab70319 at 0.04 µg/mL.

Lane 1: ab70319 IP in HEK-293T whole cell lysate.

Lane 2: ab70319 IP in HEK-293T whole cell lysate.

Lane 2: Control IgG in HEK-293T whole cell lysate.

Detection: Chemiluminescence with an exposure time of 1 second.

Please note: All products are "FOR RESEARCH USE ONLY. NOT FOR USE IN DIAGNOSTIC PROCEDURES"

Our Abpromise to you: Quality guaranteed and expert technical support

- Replacement or refund for products not performing as stated on the datasheet
- Valid for 12 months from date of delivery
- Response to your inquiry within 24 hours
- We provide support in Chinese, English, French, German, Japanese and Spanish
- Extensive multi-media technical resources to help you
- We investigate all quality concerns to ensure our products perform to the highest standards

If the product does not perform as described on this datasheet, we will offer a refund or replacement. For full details of the Abpromise, please visit <https://www.abcam.co.jp/abpromise> or contact our technical team.

Terms and conditions

- Guarantee only valid for products bought direct from Abcam or one of our authorized distributors