


# Anti-TWISTNB antibody ab99305

[1 References](#) [画像数 1](#)

### 製品の概要

---

製品名	Anti-TWISTNB antibody
製品の詳細	Rabbit polyclonal to TWISTNB
由来種	Rabbit
アプリケーション	<b>適用あり:</b> WB <b>適用なし:</b> IP
種交差性	<b>交差種:</b> Human <b>交差が予測される動物種:</b> Chimpanzee, Rhesus monkey, Gorilla 
免疫原	Synthetic peptide within Human TWISTNB aa 250-350. The exact immunogen sequence used to generate this antibody is proprietary information. If additional detail on the immunogen is needed to determine the suitability of the antibody for your needs, please <b>contact</b> our Scientific Support team to discuss your requirements. NP_001002926.1 Database link: <a href="#">Q3B726</a>
ポジティブ・コントロール	Whole cell lysate from HeLa and 293T cells.
特記事項	<p>The Life Science industry has been in the grips of a reproducibility crisis for a number of years. Abcam is leading the way in addressing this with our range of recombinant monoclonal antibodies and knockout edited cell lines for gold-standard validation. Please check that this product meets your needs before purchasing.</p> <p>If you have any questions, special requirements or concerns, please send us an inquiry and/or contact our Support team ahead of purchase. Recommended alternatives for this product can be found below, along with publications, customer reviews and Q&amp;As</p>

### 製品の特性

---

製品の状態	Liquid
保存方法	Shipped at 4°C. Upon delivery aliquot and store at -20°C. Avoid freeze / thaw cycles.
バッファー	pH: 6.8 Preservative: 0.09% Sodium azide Constituents: 0.1% BSA, Tris buffered saline
精製度	Immunogen affinity purified
ポリモノ	ポリクローナル
アイソタイプ	IgG

## アプリケーション

**The Abpromise guarantee** Abpromise保証は、次のテスト済みアプリケーションにおけるab99305の使用に適用されます  
アプリケーションノートには、推奨の開始希釈率がありますが、適切な希釈率につきましてはご確認ください。

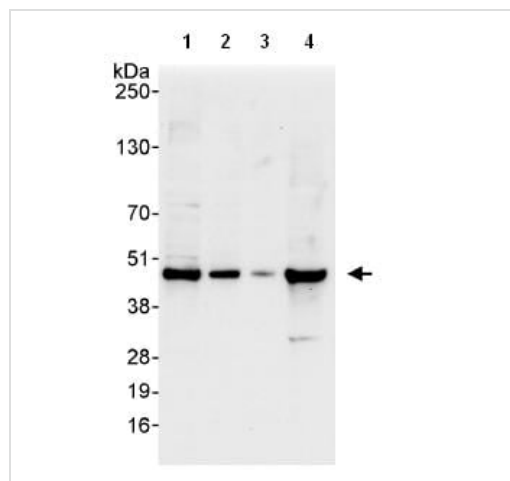
アプリケーション	Abreviews	特記事項
WB		1/2000 - 1/10000. Predicted molecular weight: 37 kDa.

**追加情報** Is unsuitable for IP.

## ターゲット情報

<b>機能</b>	DNA-dependent RNA polymerase catalyzes the transcription of DNA into RNA using the four ribonucleoside triphosphates as substrates. Component of RNA polymerase I which synthesizes ribosomal RNA precursors. Through its association with RRN3/TIF-IA may be involved in recruitment of Pol I to rDNA promoters.
<b>組織特異性</b>	Widely expressed. Expressed in all fetal and adult tissues tested, with highest expression in fetal lung, liver, and kidney, and low expression in all adult tissues.
<b>配列類似性</b>	Belongs to the eukaryotic RPA43 RNA polymerase subunit family.
<b>細胞内局在</b>	Nucleus, nucleolus.

## 画像



Western blot - Anti-TWISTNB antibody (ab99305)

**All lanes** : Anti-TWISTNB antibody (ab99305) at 0.04 µg/ml

**Lane 1** : HeLa whole cell lysate at 50 µg

**Lane 2** : HeLa whole cell lysate at 15 µg

**Lane 3** : HeLa whole cell lysate at 5 µg

**Lane 4** : 293T whole cell lysate at 50 µg

Developed using the ECL technique.

**Predicted band size:** 37 kDa

**Exposure time:** 10 seconds

**Please note:** All products are "FOR RESEARCH USE ONLY. NOT FOR USE IN DIAGNOSTIC PROCEDURES"

**Our Abpromise to you: Quality guaranteed and expert technical support**

- Replacement or refund for products not performing as stated on the datasheet
- Valid for 12 months from date of delivery
- Response to your inquiry within 24 hours
  
- We provide support in Chinese, English, French, German, Japanese and Spanish
- Extensive multi-media technical resources to help you
- We investigate all quality concerns to ensure our products perform to the highest standards

If the product does not perform as described on this datasheet, we will offer a refund or replacement. For full details of the Abpromise, please visit <https://www.abcam.co.jp/abpromise> or contact our technical team.

### **Terms and conditions**

---

- Guarantee only valid for products bought direct from Abcam or one of our authorized distributors