


Anti-TULP1 antibody ab97281

2 References [画像数 2](#)

医薬用外劇物

製品の概要

製品名	Anti-TULP1 antibody
製品の詳細	Rabbit polyclonal to TULP1
由来種	Rabbit
アプリケーション	適用あり: WB, IHC-P
種交差性	交差種: Human 交差が予測される動物種: Mouse, Rat 
免疫原	Recombinant fragment containing a sequence corresponding to a region within amino acids 281-520 of Human TULP1 (NP_003313).
ポジティブ・コントロール	293T, A431, H1299, HeLaS3, HepG2, Molt-4 and Raji whole cell lysates; Breast CA
特記事項	<p>The Life Science industry has been in the grips of a reproducibility crisis for a number of years. Abcam is leading the way in addressing this with our range of recombinant monoclonal antibodies and knockout edited cell lines for gold-standard validation. Please check that this product meets your needs before purchasing.</p> <p>If you have any questions, special requirements or concerns, please send us an inquiry and/or contact our Support team ahead of purchase. Recommended alternatives for this product can be found below, along with publications, customer reviews and Q&As</p>

製品の特性

製品の状態	Liquid
保存方法	Shipped at 4°C. Upon delivery aliquot. Store at -20°C or -80°C. Avoid freeze / thaw cycle.
バッファー	pH: 7.00 Preservative: 0.01% Thimerosal (merthiolate) Constituents: 1.21% Tris, 0.75% Glycine, 10% Glycerol (glycerin, glycerine)
精製度	Immunogen affinity purified
ポリ/モノ	ポリクローナル
アイソタイプ	IgG

アプリケーション

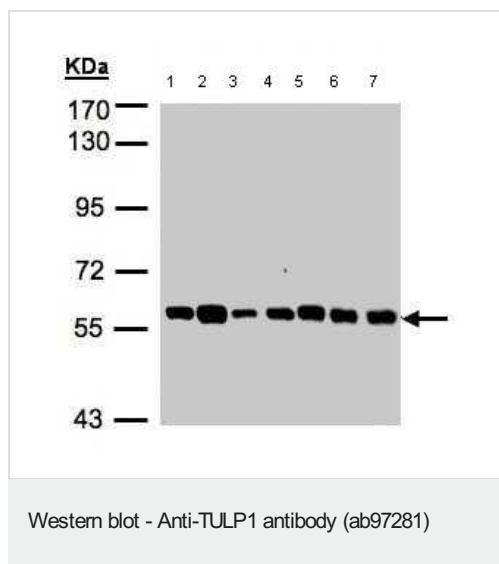
The Abpromise guarantee **Abpromise保証は、**次のテスト済みアプリケーションにおけるab97281の使用に適用されます
アプリケーションノートには、推奨の開始希釈率がありますが、適切な希釈率につきましてはご確認ください。

アプリケーション	Abreviews	特記事項
WB		1/500 - 1/3000. Predicted molecular weight: 61 kDa.
IHC-P		1/100 - 1/250.

ターゲット情報

機能	Required for normal development of photoreceptor synapses. Required for normal photoreceptor function and for long-term survival of photoreceptor cells. Interacts with cytoskeleton proteins and may play a role in protein transport in photoreceptor cells (By similarity). Binds lipids, especially phosphatidylinositol 3-phosphate, phosphatidylinositol 4-phosphate, phosphatidylinositol 5-phosphate, phosphatidylinositol 3,4-bisphosphate, phosphatidylinositol 4,5-bisphosphate, phosphatidylinositol 3,4,5-bisphosphate, phosphatidylserine and phosphatidic acid (in vitro). Contribute to stimulation of phagocytosis of apoptotic retinal pigment epithelium (RPE) cells and macrophages.
組織特異性	Retina-specific.
関連疾患	Defects in TULP1 are the cause of retinitis pigmentosa type 14 (RP14) [MIM:600132]. RP leads to degeneration of retinal photoreceptor cells. Patients typically have night vision blindness and loss of midperipheral visual field. As their condition progresses, they lose their far peripheral visual field and eventually central vision as well. RP14 inheritance is autosomal recessive. Defects in TULP1 are the cause of Leber congenital amaurosis type 15 (LCA15) [MIM:613843]. LCA15 is a severe dystrophy of the retina, typically becoming evident in the first years of life. Visual function is usually poor and often accompanied by nystagmus, sluggish or near-absent pupillary responses, photophobia, high hyperopia and keratoconus.
配列類似性	Belongs to the TUB family.
細胞内局在	Cytoplasm. Cell membrane. Secreted. Cell junction > synapse. Detected at synapses between photoreceptor cells and second-order neurons. Does not have a cleavable signal peptide and is secreted by an alternative pathway.

画像



All lanes : Anti-TULP1 antibody (ab97281) at 1/1000 dilution

Lane 1 : 293T whole cell lysate

Lane 2 : A431 whole cell lysate

Lane 3 : H1299 whole cell lysate

Lane 4 : HeLa S3 whole cell lysate

Lane 5 : HepG2 whole cell lysate

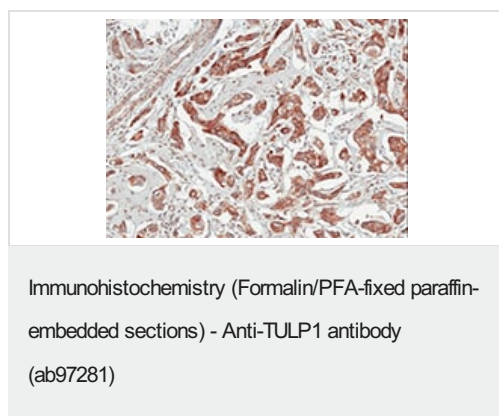
Lane 6 : Molt-4 whole cell lysate

Lane 7 : Raji whole cell lysate

Lysates/proteins at 30 µg per lane.

Predicted band size: 61 kDa

7.5% SDS PAGE



Immunohistochemical analysis of TULP1 in paraffin-embedded Breast CA, using ab97281 at 1/100 dilution.

Please note: All products are "FOR RESEARCH USE ONLY. NOT FOR USE IN DIAGNOSTIC PROCEDURES"

Our Promise to you: Quality guaranteed and expert technical support

- Replacement or refund for products not performing as stated on the datasheet
- Valid for 12 months from date of delivery

- Response to your inquiry within 24 hours
- We provide support in Chinese, English, French, German, Japanese and Spanish
- Extensive multi-media technical resources to help you
- We investigate all quality concerns to ensure our products perform to the highest standards

If the product does not perform as described on this datasheet, we will offer a refund or replacement. For full details of the Abpromise, please visit <https://www.abcam.co.jp/abpromise> or contact our technical team.

Terms and conditions

- Guarantee only valid for products bought direct from Abcam or one of our authorized distributors