


# Anti-Tuberin (phospho S939) antibody [EP1062Y] ab52962

リコンビナント RabMAb<sup>®</sup>

## 3 References [画像数 3](#)

### 製品の概要

製品名	Anti-Tuberin (phospho S939) antibody [EP1062Y]
製品の詳細	Rabbit monoclonal [EP1062Y] to Tuberin (phospho S939)
由来種	Rabbit
アプリケーション	<b>適用あり:</b> WB <b>適用なし:</b> Flow Cyt, ICC/IF, IHC-Fr, IHC-P or IP
種交差性	<b>交差種:</b> Mouse, Human <b>交差が予測される動物種:</b> Rat 
免疫原	Synthetic peptide. This information is proprietary to Abcam and/or its suppliers.
ポジティブ・コントロール	3T3 cell lysates (untreated or treated with insulin). WB: SH-SY5Y (Human neuroblastoma epithelial cell) treated with 200nM Okadaic Acid (OA) and 1uM Calyculin A (CA) for 60 min whole cell lysates
特記事項	This product is a recombinant monoclonal antibody, which offers several advantages including: <ul style="list-style-type: none"><li>- High batch-to-batch consistency and reproducibility</li><li>- Improved sensitivity and specificity</li><li>- Long-term security of supply</li><li>- Animal-free production</li></ul> For more information <a href="#">see here</a> . Our RabMAb <sup>®</sup> technology is a patented hybridoma-based technology for making rabbit monoclonal antibodies. For details on our patents, please refer to <a href="#">RabMAb<sup>®</sup> patents</a> .

### 製品の特性

製品の状態	Liquid
保存方法	Shipped at 4°C. Store at -20°C. Stable for 12 months at -20°C.
バッファー	pH: 7.20 Preservative: 0.01% Sodium azide Constituents: 9% PBS, 40% Glycerol (glycerin, glycerine), 0.05% BSA, 50% Tissue culture supernatant
精製度	Protein A purified
ポリ/モノ	モノクローナル

クローン名 EP1062Y

アイソタイプ IgG

## アプリケーション

**The Abpromise guarantee** Abpromise保証は、次のテスト済みアプリケーションにおけるab52962の使用に適用されます  
アプリケーションノートには、推奨の開始希釈率がありますが、適切な希釈率につきましてはご検討ください。

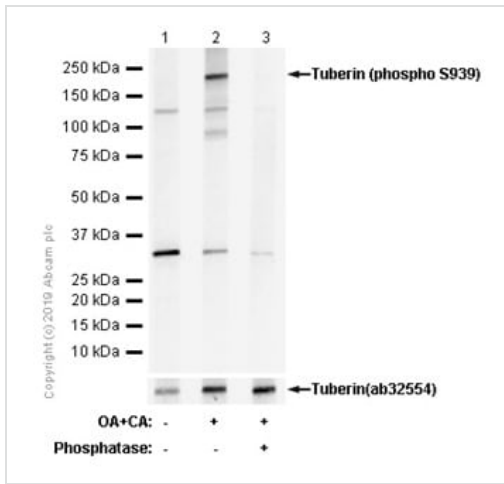
アプリケーション	Abreviews	特記事項
WB		1/1000 - 1/10000. Detects a band of approximately 180 kDa (predicted molecular weight: 201 kDa).

**追加情報** Is unsuitable for Flow Cyt, ICC/IF, IHC-Fr, IHC-P or IP.

## ターゲット情報

<b>機能</b>	In complex with TSC1, inhibits the nutrient-mediated or growth factor-stimulated phosphorylation of S6K1 and EIF4EBP1 by negatively regulating mTORC1 signaling. Acts as a GTPase-activating protein (GAP) for the small GTPase RHEB, a direct activator of the protein kinase activity of mTORC1. Implicated as a tumor suppressor. Involved in microtubule-mediated protein transport, but this seems to be due to unregulated mTOR signaling. Stimulates weakly the intrinsic GTPase activity of the Ras-related proteins RAP1A and RAB5 in vitro. Mutations in TSC2 lead to constitutive activation of RAP1A in tumors.
<b>組織特異性</b>	Liver, brain, heart, lymphocytes, fibroblasts, biliary epithelium, pancreas, skeletal muscle, kidney, lung and placenta.
<b>関連疾患</b>	<p>Defects in TSC2 are the cause of tuberous sclerosis type 2 (TSC2) [MIM:613254]. TSC2 is an autosomal dominant multi-system disorder that affects especially the brain, kidneys, heart, and skin. It is characterized by hamartomas (benign overgrowths predominantly of a cell or tissue type that occurs normally in the organ) and hamartias (developmental abnormalities of tissue combination). Clinical symptoms can range from benign hypopigmented macules of the skin to profound mental retardation with intractable seizures to premature death from a variety of disease-associated causes.</p> <p>Defects in TSC2 are a cause of lymphangiomyomatosis (LAM) [MIM:606690]. LAM is a progressive and often fatal lung disease characterized by a diffuse proliferation of abnormal smooth muscle cells in the lungs. It affects almost exclusively young women and can occur as an isolated disorder or in association with tuberous sclerosis complex.</p>
<b>配列類似性</b>	Contains 1 Rap-GAP domain.
<b>翻訳後修飾</b>	Phosphorylation at Ser-1387, Ser-1418 or Ser-1420 does not affect interaction with TSC1. Phosphorylation at Ser-939 and Thr-1462 by PKB/AKT1 is induced by growth factor stimulation.
<b>細胞内局在</b>	Cytoplasm. Membrane. At steady state found in association with membranes.

## 画像



Western blot - Anti-Tuberin (phospho S939) antibody [EP1062Y] (ab52962)

**All lanes** : Anti-Tuberin (phospho S939) antibody [EP1062Y] (ab52962) at 1/1000 dilution

**Lane 1** : SH-SY5Y (Human neuroblastoma epithelial cell) whole cell lysates

**Lane 2** : SH-SY5Y (Human neuroblastoma epithelial cell) treated with 200nM Okadaic Acid (OA) and 1uM Calyculin A (CA) for 60 min whole cell lysates

**Lane 3** : SH-SY5Y (Human neuroblastoma epithelial cell) treated with 200nM Okadaic Acid (OA) and 1uM Calyculin A (CA) for 60 min whole cell lysates. Then the membrane was incubated with phosphatase.

Lysates/proteins at 15 µg per lane.

### Secondary

**All lanes** : Goat Anti-Rabbit IgG H&L (HRP) ([ab97051](#)) at 1/20000 dilution

Developed using the ECL technique.

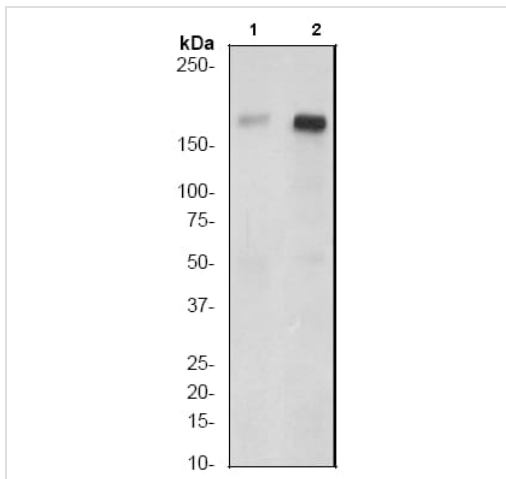
**Predicted band size:** 201 kDa

**Observed band size:** 180 kDa

**Exposure time:** 90 seconds

Blocking/Diluting buffer and concentration: 5% NFDm/TBST.

This image is derived from purified batch.



Western blot - Anti-Tuberin (phospho S939) antibody [EP1062Y] (ab52962)

**All lanes :** Anti-Tuberin (phospho S939) antibody [EP1062Y] (ab52962) at 1/10000 dilution

**Lane 1 :** 3T3 cell lysate untreated

**Lane 2 :** 3T3 cell lysate treated with insulin

Lysates/proteins at 10 µg per lane.





**Secondary**

**All lanes :** goat anti-rabbit HRP at 1/2000 dilution

**Predicted band size:** 201 kDa

**Observed band size:** 180 kDa

Why choose a recombinant antibody?

 <p><b>Research with confidence</b> Consistent and reproducible results</p>	 <p><b>Long-term and scalable supply</b> Recombinant technology</p>
 <p><b>Success from the first experiment</b> Confirmed specificity</p>	 <p><b>Ethical standards compliant</b> Animal-free production</p>

Anti-Tuberin (phospho S939) antibody [EP1062Y] (ab52962)

**Please note:** All products are "FOR RESEARCH USE ONLY. NOT FOR USE IN DIAGNOSTIC PROCEDURES"

**Our Abpromise to you: Quality guaranteed and expert technical support**

- Replacement or refund for products not performing as stated on the datasheet
- Valid for 12 months from date of delivery
- Response to your inquiry within 24 hours
- We provide support in Chinese, English, French, German, Japanese and Spanish
- Extensive multi-media technical resources to help you
- We investigate all quality concerns to ensure our products perform to the highest standards

If the product does not perform as described on this datasheet, we will offer a refund or replacement. For full details of the Abpromise, please visit <https://www.abcam.co.jp/abpromise> or contact our technical team.

## Terms and conditions

---

- Guarantee only valid for products bought direct from Abcam or one of our authorized distributors