


Anti-TUBB2A + TUBB2B antibody [EPR11843] ab170931

リコンビナント **RabMAb**

4 References **画像数 5**

製品の概要

製品名	Anti-TUBB2A + TUBB2B antibody [EPR11843]
製品の詳細	Rabbit monoclonal [EPR11843] to TUBB2A + TUBB2B
由来種	Rabbit
アプリケーション	適用あり: Flow Cyt (Intra), WB, IHC-P, IP 適用なし: ICC/IF
種交差性	交差種: Human 交差が予測される動物種: Mouse, Rat 
免疫原	Recombinant fragment within Human TUBB2A. The exact sequence is proprietary. Database link: Q13885
ポジティブ・コントロール	293T, HepG2, Jurkat and HeLa whole cell lysate (ab150035); Human brain tissue; Jurkat cells.
特記事項	This product is a recombinant monoclonal antibody, which offers several advantages including: <ul style="list-style-type: none"> - High batch-to-batch consistency and reproducibility - Improved sensitivity and specificity - Long-term security of supply - Animal-free production For more information see here . Our RabMAb [®] technology is a patented hybridoma-based technology for making rabbit monoclonal antibodies. For details on our patents, please refer to RabMAb[®] patents .

製品の特性

製品の状態	Liquid
保存方法	Shipped at 4°C. Store at +4°C short term (1-2 weeks). Upon delivery aliquot. Store at -20°C long term. Avoid freeze / thaw cycle.
バッファー	pH: 7.2 Preservative: 0.01% Sodium azide Constituents: 9% PBS, 40% Glycerol (glycerin, glycerine), 0.05% BSA, 50% Tissue culture supernatant
精製度	Tissue culture supernatant
ポリ/モノ	モノクローナル

クローン名 EPR11843
アイソタイプ IgG

アプリケーション

The Abpromise guarantee Abpromise保証は、次のテスト済みアプリケーションにおけるab170931の使用に適用されます
アプリケーションノートには、推奨の開始希釈率がありますが、適切な希釈率につきましてはご確認ください。

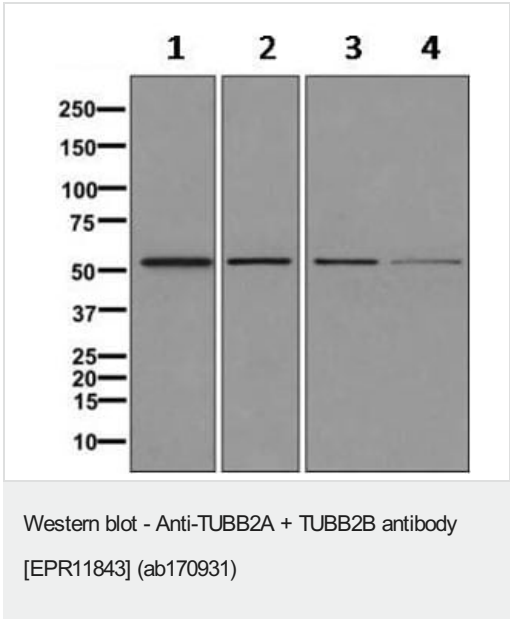
アプリケーション	Abreviews	特記事項
Flow Cyt (Intra)		1/10 - 1/100. ab172730 - Rabbit monoclonal IgG, is suitable for use as an isotype control with this antibody.
WB		1/10000 - 1/50000. Predicted molecular weight: 50 kDa.
IHC-P		1/100 - 1/250. Perform heat mediated antigen retrieval with citrate buffer pH 6 before commencing with IHC staining protocol.
IP		1/10 - 1/100.

追加情報 Is unsuitable for ICC/IF.

ターゲット情報

細胞内局在 TUBB2A: Cytoplasm > cytoskeleton. TUBB2B: Cytoplasm, cytoskeleton.

画像



All lanes : Anti-TUBB2A + TUBB2B antibody [EPR11843]
(ab170931) at 1/10000 dilution

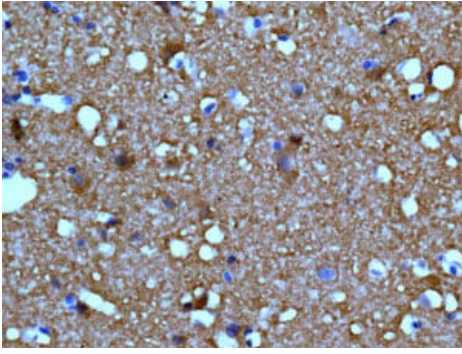
Lane 1 : 293T cell lysate
Lane 2 : HepG2 cell lysate
Lane 3 : Jurkat cell lysate
Lane 4 : HeLa cell lysate

Lysates/proteins at 10 µg per lane.

Secondary

All lanes : Goat anti-rabbit HRP conjugated at 1/2000 dilution

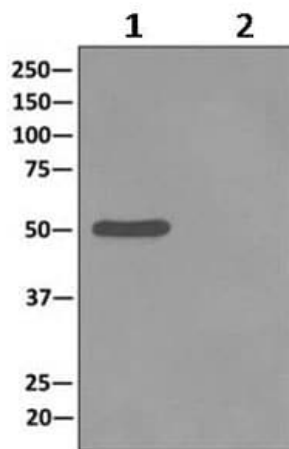
Predicted band size: 50 kDa



Immunohistochemistry (Formalin/PFA-fixed paraffin-embedded sections) - Anti-TUBB2A + TUBB2B antibody [EPR11843] (ab170931)

Immunohistochemical analysis of paraffin-embedded Human brain tissue labeling TUBB2A with ab170931 at 1/100 dilution.

Perform heat mediated antigen retrieval with citrate buffer pH 6 before commencing with IHC staining protocol.



Immunoprecipitation - Anti-TUBB2A + TUBB2B antibody [EPR11843] (ab170931)

Western blot analysis on immunoprecipitation pellet from 293T cell lysate (Lane 1) or 1X PBS (negative control) (Lane 2) using ab170931 and HRP-conjugated anti-rabbit IgG preferentially detecting the non-reduced form of rabbit IgG.

Lane 1 Primary: ab170931, 1/10000 dilution

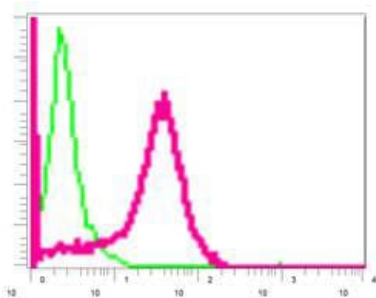
Sample: Immunoprecipitation pellet from 293T cell lysate

Secondary: HRP-conjugated anti-rabbit IgG

Lane 2 Primary: ab170931, 1/10000 dilution

Sample: 1X PBS (negative control)

Secondary: HRP-conjugated anti-rabbit IgG



Flow Cytometry (Intracellular) - Anti-TUBB2A + TUBB2B antibody [EPR11843] (ab170931)

Intracellular flow cytometric analysis of permeabilized Jurkat cells labeling TUBB2A with ab170931 at 1/10 dilution (red) compared to a rabbit IgG negative control (green).

Why choose a recombinant antibody?



Research with confidence
Consistent and reproducible results



Long-term and scalable supply
Recombinant technology



Success from the first experiment
Confirmed specificity



Ethical standards compliant
Animal-free production

Anti-TUBB2A + TUBB2B antibody [EPR11843]
(ab170931)

Please note: All products are "FOR RESEARCH USE ONLY. NOT FOR USE IN DIAGNOSTIC PROCEDURES"

Our Abpromise to you: Quality guaranteed and expert technical support

- Replacement or refund for products not performing as stated on the datasheet
- Valid for 12 months from date of delivery
- Response to your inquiry within 24 hours
- We provide support in Chinese, English, French, German, Japanese and Spanish
- Extensive multi-media technical resources to help you
- We investigate all quality concerns to ensure our products perform to the highest standards

If the product does not perform as described on this datasheet, we will offer a refund or replacement. For full details of the Abpromise, please visit <https://www.abcam.co.jp/abpromise> or contact our technical team.

Terms and conditions

- Guarantee only valid for products bought direct from Abcam or one of our authorized distributors