

Anti-TUBA1B antibody [EPR1333] ab108629

リコンビナント **RabMAb**

17 References 画像数 12

製品の概要

製品名	Anti-TUBA1B antibody [EPR1333]
製品の詳細	Rabbit monoclonal [EPR1333] to TUBA1B
由来種	Rabbit
アプリケーション	適用あり: Flow Cyt (Intra), WB, IHC-P, ICC/IF 適用なし: IP
種交差性	交差種: Mouse, Rat, Human
免疫原	Synthetic peptide. This information is proprietary to Abcam and/or its suppliers.
ポジティブ・コントロール	WB: HeLa, HEK-293, Jurkat, 293T, A431, Mouse brain, Mouse kidney, and Rat brain lysates. IHC-P: human breast carcinoma, placenta and breast tissues, mouse liver, and rat liver tissues. ICC/IF: Jurkat and HeLa cells. Flow Cyt (intra): Jurkat cells.
特記事項	This product is a recombinant monoclonal antibody, which offers several advantages including: <ul style="list-style-type: none"> - High batch-to-batch consistency and reproducibility - Improved sensitivity and specificity - Long-term security of supply - Animal-free production For more information see here . Our RabMAb [®] technology is a patented hybridoma-based technology for making rabbit monoclonal antibodies. For details on our patents, please refer to RabMAb[®] patents .

製品の特性

製品の状態	Liquid
保存方法	Shipped at 4°C. Store at -20°C. Stable for 12 months at -20°C.
バッファー	pH: 7.20 Preservative: 0.01% Sodium azide Constituents: PBS, 40% Glycerol (glycerin, glycerine), 0.05% BSA
精製度	Protein A purified
ポリ/モノ	モノクローナル
クローン名	EPR1333

アプリケーション

The Abpromise guarantee Abpromise保証は、 次のテスト済みアプリケーションにおけるab108629の使用に適用されます
アプリケーションノートには、推奨の開始希釈率がありますが、適切な希釈率につきましてはご検討ください。

アプリケーション	Abreviews	特記事項
Flow Cyt (Intra)		1/10 - 1/100. ab172730 - Rabbit monoclonal IgG, is suitable for use as an isotype control with this antibody.
WB		1/100000. Detects a band of approximately 50 kDa (predicted molecular weight: 50 kDa). For unpurified use at 1/10000 - 1/50000.
IHC-P		1/2000. Perform heat mediated antigen retrieval with citrate buffer pH 6 before commencing with IHC staining protocol. Antigen retrieval is recommended. See IHC antigen retrieval protocols . For unpurified use at 1/500 - 1/1000.
ICC/IF		1/50. For unpurified use at 1/250 - 1/500.

追加情報

Is unsuitable for IP.

ターゲット情報

機能

Tubulin is the major constituent of microtubules. It binds two moles of GTP, one at an exchangeable site on the beta chain and one at a non-exchangeable site on the alpha-chain.

配列類似性

Belongs to the tubulin family.

翻訳後修飾

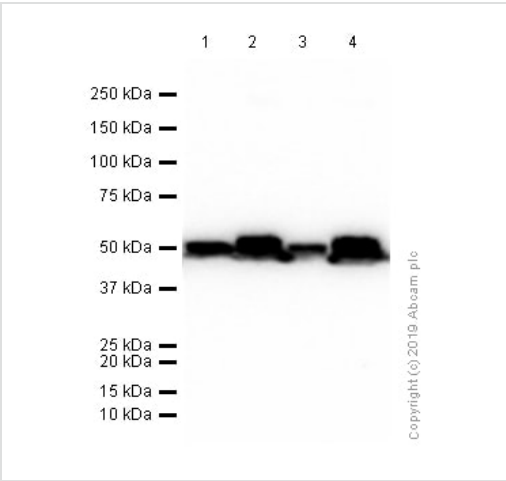
Undergoes a tyrosination/detyrosination cycle, the cyclic removal and re-addition of a C-terminal tyrosine residue by the enzymes tubulin tyrosine carboxypeptidase (TTCP) and tubulin tyrosine ligase (TTL), respectively.

Some glutamate residues at the C-terminus are polyglutamylated. This modification occurs exclusively on glutamate residues and results in polyglutamate chains on the gamma-carboxyl group. Also monoglycylated but not polyglycylated due to the absence of functional TTL10 in human. Monoglycylation is mainly limited to tubulin incorporated into axonemes (cilia and flagella) whereas glutamylation is prevalent in neuronal cells, centrioles, axonemes, and the mitotic spindle. Both modifications can coexist on the same protein on adjacent residues, and lowering glycylation levels increases polyglutamylation, and reciprocally. The precise function of such modifications is still unclear but they regulate the assembly and dynamics of axonemal microtubules.

Acetylation of alpha-tubulins at Lys-40 stabilizes microtubules and affects affinity and processivity of microtubule motors. This modification has a role in multiple cellular functions, ranging from cell motility, cell cycle progression or cell differentiation to intracellular trafficking and signaling.

細胞内局在

Cytoplasm > cytoskeleton.



Western blot - Anti-TUBA1B antibody [EPR1333] (ab108629)

All lanes : Anti-TUBA1B antibody [EPR1333] (ab108629) at 1/100000 dilution (Purified)

Lane 1 : HEK-293 (Human embryonic kidney epithelial cell) whole cell lysates

Lane 2 : Mouse brain lysates

Lane 3 : Mouse kidney lysates

Lane 4 : Rat brain lysates

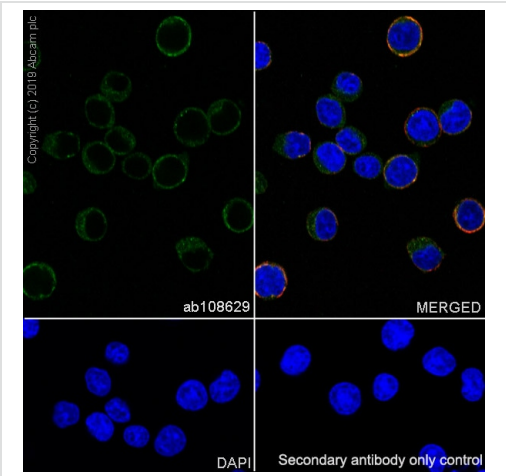
Lysates/proteins at 20 µg per lane.

Secondary

All lanes : Goat Anti-Rabbit IgG H&L (HRP) ([ab97051](#)) at 1/20000 dilution

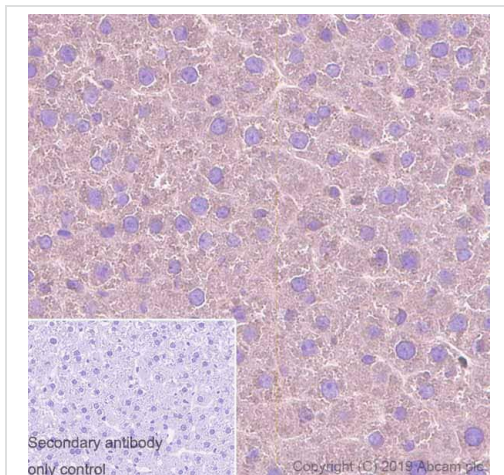
Predicted band size: 50 kDa

Observed band size: 50 kDa



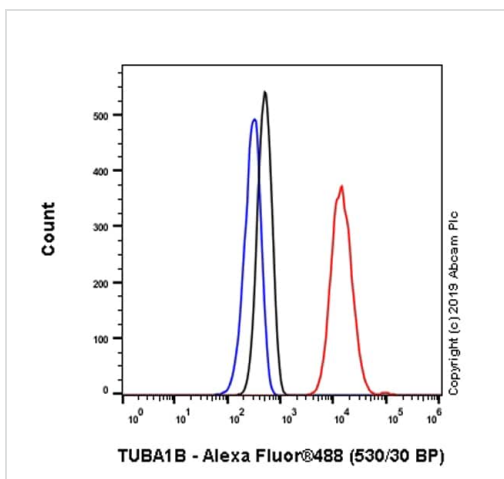
Immunocytochemistry/ Immunofluorescence - Anti-TUBA1B antibody [EPR1333] (ab108629)

Immunocytochemistry/ Immunofluorescence analysis of Jurkat (Human T cell leukemia T lymphocyte) cells labeling TUBA1B with purified ab108629 at 1/50 dilution (2.56 µg/ml). Cells were fixed in 4% Paraformaldehyde and permeabilized with 0.1% tritonX-100. Cells were counterstained with Ab195889 Anti-alpha Tubulin antibody [DM1A] - Microtubule Marker (Alexa Fluor® 594) 1/200 (2.5 µg/ml). Goat anti rabbit IgG (Alexa Fluor® 488, [ab150077](#)) was used as the secondary antibody at 1/1000 (2 µg/ml) dilution. DAPI (blue) was used as nuclear counterstain. PBS instead of the primary antibody was used as the secondary antibody only control.



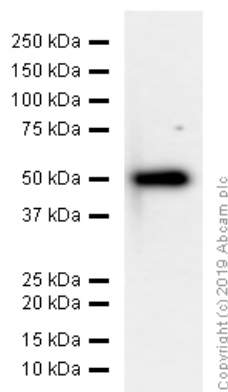
Immunohistochemistry (Formalin/PFA-fixed paraffin-embedded sections) - Anti-TUBA1B antibody [EPR1333] (ab108629)

Immunohistochemistry (Formalin/PFA-fixed paraffin-embedded sections) analysis of rat liver tissue sections labeling TUBA1B with purified ab108629 at 1/2000 dilution (0.06 µg/ml). Heat mediated antigen retrieval using Bond™ Epitope Retrieval Solution 2 (pH 9.0). Rabbit specific IHC polymer detection kit HRP/DAB ([ab209101](#)) was used as the secondary antibody. Negative control: PBS instead of the primary antibody. Hematoxylin was used as a counterstain.



Flow Cytometry (Intracellular) - Anti-TUBA1B antibody [EPR1333] (ab108629)

Intracellular Flow Cytometry analysis of Jurkat (Human T cell leukemia T lymphocyte) cells labeling TUBA1B with purified ab108629 at 1/20 dilution (5 µg/ml) (Red). Cells were fixed with 4% Paraformaldehyde and permeabilised with 90% Methanol. A Goat anti rabbit IgG (Alexa Fluor® 488, [ab150077](#)) secondary antibody was used at 1/2000. Isotype control - Rabbit monoclonal IgG (Black). Unlabeled control - Cell without incubation with primary antibody and secondary antibody (Blue).



Western blot - Anti-TUBA1B antibody [EPR1333]
(ab108629)

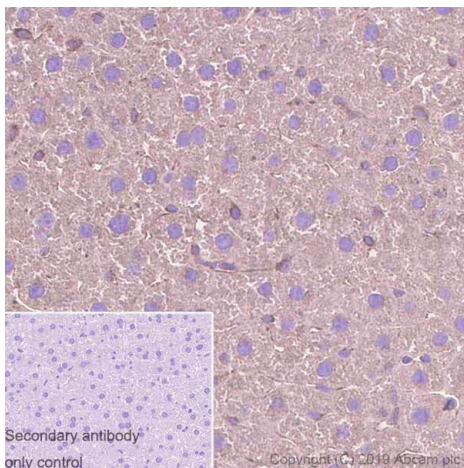
Anti-TUBA1B antibody [EPR1333] (ab108629) at 1/100000 dilution
(Purified) + HeLa (Human cervix adenocarcinoma epithelial cell)
whole cell lysates at 15 µg

Secondary

Goat Anti-Rabbit IgG H&L (HRP) ([ab97051](#)) at 1/20000 dilution

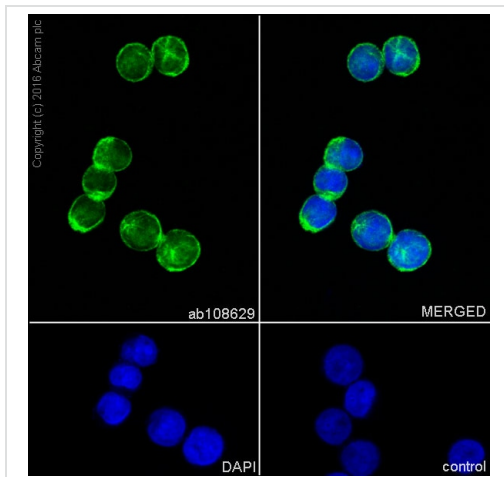
Predicted band size: 50 kDa

Observed band size: 50 kDa



Immunohistochemistry (Formalin/PFA-fixed paraffin-
embedded sections) - Anti-TUBA1B antibody
[EPR1333] (ab108629)

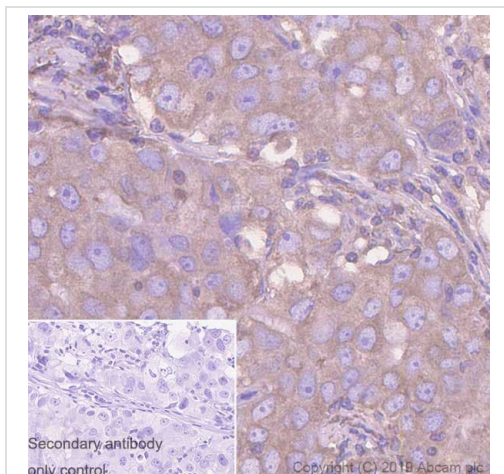
Immunohistochemistry (Formalin/PFA-fixed paraffin-embedded sections) analysis of mouse liver tissue sections labeling TUBA1B with purified ab108629 at 1/2000 dilution (0.06 µg/ml). Heat mediated antigen retrieval using Bond™ Epitope Retrieval Solution 2 (pH 9.0). Rabbit specific IHC polymer detection kit HRP/DAB ([ab209101](#)) was used as the secondary antibody. Negative control: PBS instead of the primary antibody. Hematoxylin was used as a counterstain.



Immunocytochemistry/ Immunofluorescence - Anti-TUBA1B antibody [EPR1333] (ab108629)

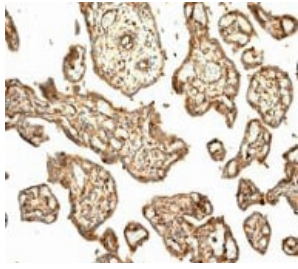
Immunocytochemistry/Immunofluorescence analysis of Jurkat (human acute T cell leukemia) labelling TUBA1B with purified ab108629 at 1/500. Cells were fixed with 100% methanol. An Alexa Fluor® 488-conjugated goat anti-rabbit IgG (1/1000) was used as the secondary antibody (Ab150077). Nuclei counterstained with DAPI (blue).

Control: PBS only



Immunohistochemistry (Formalin/PFA-fixed paraffin-embedded sections) - Anti-TUBA1B antibody [EPR1333] (ab108629)

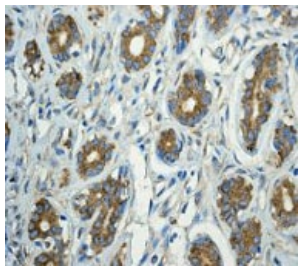
Immunohistochemistry (Formalin/PFA-fixed paraffin-embedded sections) analysis of human breast carcinoma tissue sections labeling TUBA1B with purified ab108629 at 1/2000 dilution (0.06 µg/ml). Heat mediated antigen retrieval using Bond™ Epitope Retrieval Solution 2 (pH 9.0). Rabbit specific IHC polymer detection kit HRP/DAB ([ab209101](#)) was used as the secondary antibody. Negative control: PBS instead of the primary antibody. Hematoxylin was used as a counterstain.



Immunohistochemistry (Formalin/PFA-fixed paraffin-embedded sections) - Anti-TUBA1B antibody [EPR1333] (ab108629)

Unpurified ab108629, at 1/500 dilution, staining TUBA1B in paraffin embedded Human placenta tissue by Immunohistochemistry.

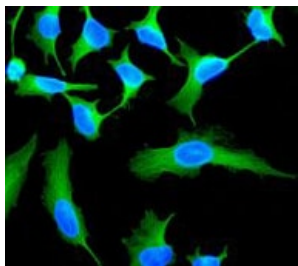
Perform heat mediated antigen retrieval with citrate buffer pH 6 before commencing with IHC staining protocol.



Immunohistochemistry (Formalin/PFA-fixed paraffin-embedded sections) - Anti-TUBA1B antibody [EPR1333] (ab108629)

Unpurified ab108629, at a 1/500 dilution, staining TUBA1B in paraffin embedded Human breast tissue by Immunohistochemistry.

Perform heat mediated antigen retrieval with citrate buffer pH 6 before commencing with IHC staining protocol.



Immunocytochemistry/ Immunofluorescence - Anti-TUBA1B antibody [EPR1333] (ab108629)

Unpurified ab108629, at a 1/250 dilution, staining TUBA1B in HeLa cells by Immunofluorescence.

Why choose a recombinant antibody?



Research with confidence
Consistent and reproducible results



Long-term and scalable supply
Recombinant technology



Success from the first experiment
Confirmed specificity



Ethical standards compliant
Animal-free production

Anti-TUBA1B antibody [EPR1333] (ab108629)

Please note: All products are "FOR RESEARCH USE ONLY. NOT FOR USE IN DIAGNOSTIC PROCEDURES"

Our Abpromise to you: Quality guaranteed and expert technical support

- Replacement or refund for products not performing as stated on the datasheet
- Valid for 12 months from date of delivery
- Response to your inquiry within 24 hours
- We provide support in Chinese, English, French, German, Japanese and Spanish
- Extensive multi-media technical resources to help you
- We investigate all quality concerns to ensure our products perform to the highest standards

If the product does not perform as described on this datasheet, we will offer a refund or replacement. For full details of the Abpromise, please visit <https://www.abcam.co.jp/abpromise> or contact our technical team.

Terms and conditions

- Guarantee only valid for products bought direct from Abcam or one of our authorized distributors