

Anti-Tspan-8 antibody ab70007

★★★★★ [1 Abreviews](#) [3 References](#) [画像数 3](#)

製品の概要

製品名	Anti-Tspan-8 antibody
製品の詳細	Rabbit polyclonal to Tspan-8
由来種	Rabbit
アプリケーション	適用あり: WB, ICC/IF, IHC-P
種交差性	交差種: Human
免疫原	Synthetic peptide corresponding to Human Tspan-8 (internal sequence).
ポジティブ・コントロール	293 cell extract COLO cell extract HeLa cells
特記事項	<p>The Life Science industry has been in the grips of a reproducibility crisis for a number of years. Abcam is leading the way in addressing this with our range of recombinant monoclonal antibodies and knockout edited cell lines for gold-standard validation. Please check that this product meets your needs before purchasing.</p> <p>If you have any questions, special requirements or concerns, please send us an inquiry and/or contact our Support team ahead of purchase. Recommended alternatives for this product can be found below, along with publications, customer reviews and Q&As</p>

製品の特性

製品の状態	Liquid
保存方法	Shipped at 4°C. Upon delivery aliquot and store at -20°C. Avoid freeze / thaw cycles.
バッファー	<p>pH: 7.40</p> <p>Preservative: 0.02% Sodium azide</p> <p>Constituents: 50% Glycerol (glycerin, glycerine), 0.87% Sodium chloride, PBS</p> <p>Without Mg2+ and Ca2+</p>
精製度	Immunogen affinity purified
特記事項 (精製)	Affinity-purified from rabbit antiserum by affinity-chromatography using epitope-specific immunogen.
ポリ/モノ	ポリクローナル
アイソタイプ	IgG

アプリケーション

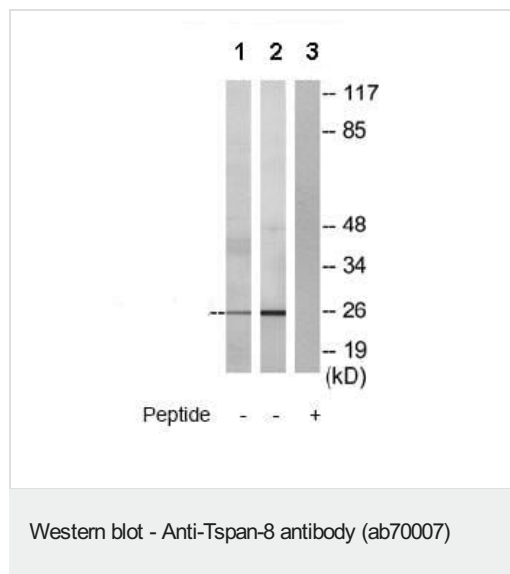
The Abpromise guarantee Abpromise保証は、次のテスト済みアプリケーションにおけるab70007の使用に適用されます
アプリケーションノートには、推奨の開始希釈率がありますが、適切な希釈率につきましてはご検討ください。

アプリケーション	Abreviews	特記事項
WB		1/500 - 1/1000. Detects a band of approximately 26 kDa (predicted molecular weight: 26 kDa).
ICC/IF		1/500 - 1/1000.
IHC-P	★★★★★ (1)	Use a concentration of 5 µg/ml. Perform heat mediated antigen retrieval with citrate buffer pH 6 before commencing with IHC staining protocol.

ターゲット情報

組織特異性	Gastric, colon, rectal, and pancreatic carcinomas.
配列類似性	Belongs to the tetraspanin (TM4SF) family.
細胞内局在	Membrane.

画像



All lanes : Anti-Tspan-8 antibody (ab70007) at 1/500 dilution

Lane 1 : 293 cell extract

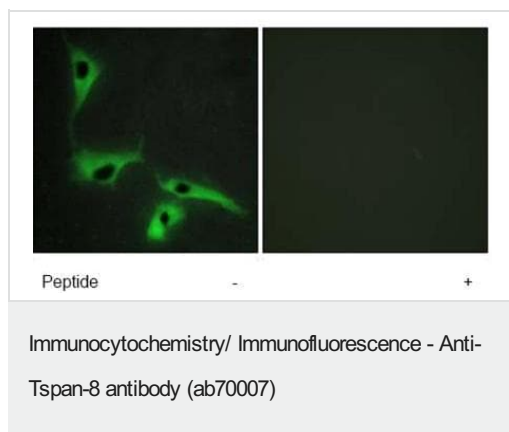
Lane 2 : COLO cell extract

Lane 3 : COLO cell extract with immunising peptide at 10 µg

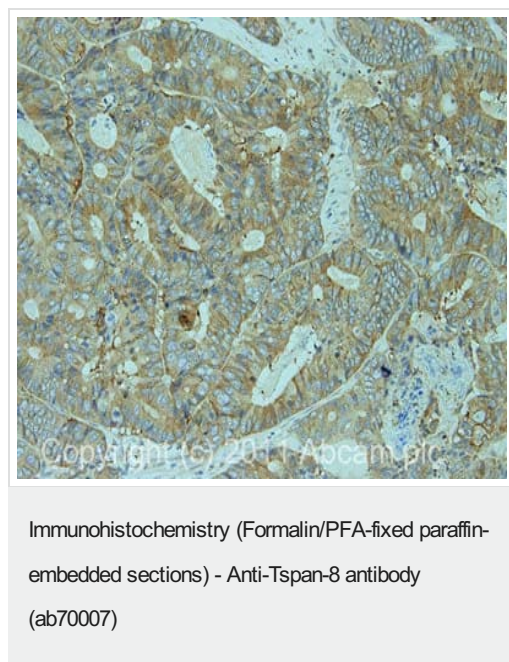
Lysates/proteins at 30 µg per lane.

Predicted band size: 26 kDa

Observed band size: 26 kDa



Immunofluorescence of HeLa cells treated with ab70007 at 1/500 dilution. Right panel was treated with immunising peptide.



IHC image of ab70007 staining in human colon cancer formalin fixed paraffin embedded tissue section, performed on a Leica Bond™ system using the standard protocol F. The section was pre-treated using heat mediated antigen retrieval with sodium citrate buffer (pH6, epitope retrieval solution 1) for 20 mins. The section was then incubated with ab70007, 5µg/ml, for 15 mins at room temperature and detected using an HRP conjugated compact polymer system. DAB was used as the chromogen. The section was then counterstained with haematoxylin and mounted with DPX.

For other IHC staining systems (automated and non-automated) customers should optimize variable parameters such as antigen retrieval conditions, primary antibody concentration and antibody incubation times.

Please note: All products are "FOR RESEARCH USE ONLY. NOT FOR USE IN DIAGNOSTIC PROCEDURES"

Our Abpromise to you: Quality guaranteed and expert technical support

- Replacement or refund for products not performing as stated on the datasheet
- Valid for 12 months from date of delivery
- Response to your inquiry within 24 hours
- We provide support in Chinese, English, French, German, Japanese and Spanish
- Extensive multi-media technical resources to help you
- We investigate all quality concerns to ensure our products perform to the highest standards

If the product does not perform as described on this datasheet, we will offer a refund or replacement. For full details of the Abpromise, please visit <https://www.abcam.co.jp/abpromise> or contact our technical team.

Terms and conditions

- Guarantee only valid for products bought direct from Abcam or one of our authorized distributors