


Anti-TRPS1 antibody ab125197

★★★★★ [1 Abreviews](#) [1 References](#) [画像数 4](#)

製品の概要

製品名	Anti-TRPS1 antibody
製品の詳細	Rabbit polyclonal to TRPS1
由来種	Rabbit
アプリケーション	適用あり: WB, IP, IHC-P
種交差性	交差種: Human 交差が予測される動物種: Rat, Rabbit, Horse, Chicken, Guinea pig, Cow, Dog, Turkey, Pig, Chimpanzee, Rhesus monkey, Gorilla, Orangutan, Platypus 
免疫原	Synthetic peptide, corresponding to a region within amino acids 1000-1050 of Human TRPS1 (AAG21134.1).
ポジティブ・コントロール	WB: Jurkat, 293T, HeLa whole cell lysate. IP: HeLa cells. IHC-P: Human breast carcinoma tissue.
特記事項	<p>The Life Science industry has been in the grips of a reproducibility crisis for a number of years. Abcam is leading the way in addressing this with our range of recombinant monoclonal antibodies and knockout edited cell lines for gold-standard validation. Please check that this product meets your needs before purchasing.</p> <p>If you have any questions, special requirements or concerns, please send us an inquiry and/or contact our Support team ahead of purchase. Recommended alternatives for this product can be found below, along with publications, customer reviews and Q&As</p>

製品の特性

製品の状態	Liquid
保存方法	Shipped at 4°C. Upon delivery aliquot and store at -20°C. Avoid freeze / thaw cycles.
バッファー	pH: 7 Preservative: 0.09% Sodium azide Constituent: 99% Tris citrate/phosphate
精製度	pH 7 to 8. Immunogen affinity purified
ポリ/モノ	ポリクローナル
アイソタイプ	IgG

アプリケーション

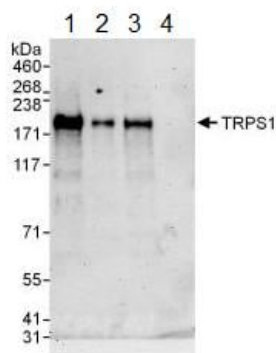
The Abpromise guarantee **Abpromise保証は、次のテスト済みアプリケーションにおけるab125197の使用に適用されます**
アプリケーションノートには、推奨の開始希釈率がありますが、適切な希釈率につきましてはご検討ください。

アプリケーション	Abreviews	特記事項
WB	★★★★★ (1)	1/2000 - 1/10000. Predicted molecular weight: 142 kDa.
IP		Use at 2-10 µg/mg of lysate.
IHC-P		1/500 - 1/2000.

ターゲット情報

機能	Transcriptional repressor. Binds specifically to GATA sequences and represses expression of GATA-regulated genes at selected sites and stages in vertebrate development. Regulates chondrocyte proliferation and differentiation. Executes multiple functions in proliferating chondrocytes, expanding the region of distal chondrocytes, activating proliferation in columnar cells and supporting the differentiation of columnar into hypertrophic chondrocytes.
組織特異性	Ubiquitously expressed in the adult. Found in fetal brain, lung, kidney, liver, spleen and thymus. More highly expressed in androgen-dependent than in androgen-independent prostate cancer cells.
関連疾患	Defects in TRPS1 are the cause of tricho-rhino-phalangeal syndrome type 1 (TRPS1) [MIM:190350]. TRPS1 is an autosomal dominant disorder characterized by craniofacial and skeletal abnormalities. It is allelic with tricho-rhino-phalangeal type 3. Typical features include sparse scalp hair, a bulbous tip of the nose, protruding ears, a long flat philtrum and a thin upper vermilion border. Skeletal defects include cone-shaped epiphyses at the phalanges, hip malformations and short stature. Defects in TRPS1 are a cause of tricho-rhino-phalangeal syndrome type 2 (TRPS2) [MIM:150230]. A syndrome that combines the clinical features of trichorhinophalangeal syndrome type 1 and multiple exostoses type 1. Affected individuals manifest multiple dysmorphic facial features including large, laterally protruding ears, a bulbous nose, an elongated upper lip, as well as sparse scalp hair, winged scapulae, multiple cartilaginous exostoses, redundant skin, and mental retardation. Note=A chromosomal aberration resulting in the loss of functional copies of TRPS1 and EXT1 has been found in TRPS2 patients. Defects in TRPS1 are the cause of tricho-rhino-phalangeal syndrome type 3 (TRPS3) [MIM:190351]. TRPS3 is an autosomal dominant disorder characterized by craniofacial and skeletal abnormalities. It is allelic with tricho-rhino-phalangeal type 1. In TRPS3 a more severe brachydactyly and growth retardation are observed.
配列類似性	Contains 7 C2H2-type zinc fingers. Contains 1 GATA-type zinc finger.
翻訳後修飾	Sumoylated. Sumoylation in the repressor domain inhibits the transcription repression activity. Sumoylation on Lys-1201 is the major site. Appears to be sumoylated on multiple sites.
細胞内局在	Nucleus.

画像



Western blot - Anti-TRPS1 antibody (ab125197)

All lanes : Anti-TRPS1 antibody (ab125197) at 0.1 µg/ml

Lane 1 : HeLa whole cell lysate at 50 µg

Lane 2 : HeLa whole cell lysate at 15 µg

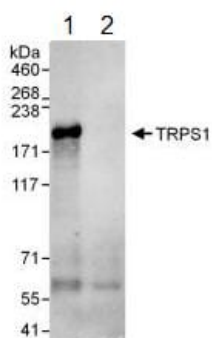
Lane 3 : 293T whole cell lysate at 50 µg

Lane 4 : Jurkat whole cell lysate at 50 µg

Developed using the ECL technique.

Predicted band size: 142 kDa

Exposure time: 3 minutes



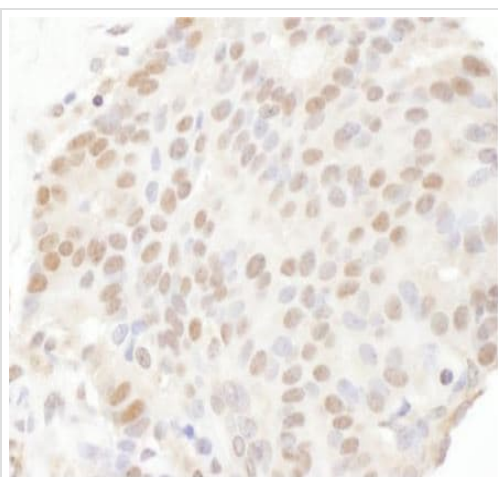
Immunoprecipitation - Anti-TRPS1 antibody
(ab125197)

ab125197 at 1 µg/ml staining TRPS1 by WB, following immunoprecipitation of whole cell lysate from HeLa cells.

Lane 1; IP using ab125197 at 6 µg/mg lysate.

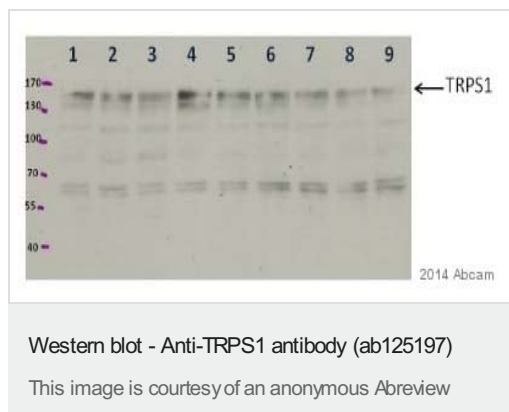
Lane 2; IP using control IgG.

1 mg of lysate was used for IP and 20% of IP was loaded. Detection utilised Chemiluminescence with a 30 second exposure.



Immunohistochemistry (Formalin/PFA-fixed paraffin-embedded sections) - Anti-TRPS1 antibody
(ab125197)

Paraffin embedded human breast carcinoma tissue stained for TRPS1 using ab125197 at 1/1000 dilution in immunohistochemical analysis.



All lanes : Anti-TRPS1 antibody (ab125197) at 1/500 dilution

Lane 1 : Ha-Ras-transformed EpH4 cells - nuclear extracts

Lanes 2-3 : EpF-2 and EpF-1 (Eph4 subclones expressing high amounts of Zeb1 and Zeb2 mRNA) - nuclear extracts

Lane 4 : EpH4 (parental) - nuclear extracts

Lane 5 : EpF-2 - nuclear extracts

Lanes 6-7 : EpF-Z1.1 and EpF-Z1.2 (EpF-1 clones transfected with siRNA to knockdown Zeb1) - nuclear extracts

Lanes 8-9 : EpF-Z2.1 and EpF-Z2.2 (EpF-1 clones transfected with siRNA to knockdown Zeb2) - nuclear extracts

Lysates/proteins at 25 µg per lane.

Secondary

All lanes : HRP-conjugated donkey anti-rabbit IgG polyclonal at 1/10000 dilution

Performed under reducing conditions.

Predicted band size: 142 kDa

Exposure time: 20 seconds

Please note: All products are "FOR RESEARCH USE ONLY. NOT FOR USE IN DIAGNOSTIC PROCEDURES"

Our Abpromise to you: Quality guaranteed and expert technical support

- Replacement or refund for products not performing as stated on the datasheet
- Valid for 12 months from date of delivery
- Response to your inquiry within 24 hours
- We provide support in Chinese, English, French, German, Japanese and Spanish
- Extensive multi-media technical resources to help you
- We investigate all quality concerns to ensure our products perform to the highest standards

If the product does not perform as described on this datasheet, we will offer a refund or replacement. For full details of the Abpromise, please visit <https://www.abcam.co.jp/abpromise> or contact our technical team.

Terms and conditions

- Guarantee only valid for products bought direct from Abcam or one of our authorized distributors