

### Anti-TRPC3 antibody ab51560

★★★★★ [2 Abreviews](#) [16 References](#) [画像数 1](#)

#### 製品の概要

製品名	Anti-TRPC3 antibody
製品の詳細	Rabbit polyclonal to TRPC3
由来種	Rabbit
特異性	ab51560 can be used for the detection of TRPC3.
アプリケーション	<b>適用あり:</b> WB, IHC-P
種交差性	<b>交差種:</b> Mouse, Human
免疫原	Synthetic peptide corresponding to Human TRPC3 (N terminal). Corresponding to 14 amino acids near to the N terminal of Human TRPC3.
特記事項	<p>The Life Science industry has been in the grips of a reproducibility crisis for a number of years. Abcam is leading the way in addressing this with our range of recombinant monoclonal antibodies and knockout edited cell lines for gold-standard validation. Please check that this product meets your needs before purchasing.</p> <p>If you have any questions, special requirements or concerns, please send us an inquiry and/or contact our Support team ahead of purchase. Recommended alternatives for this product can be found below, along with publications, customer reviews and Q&amp;As</p>

#### 製品の特性

製品の状態	Liquid
保存方法	Shipped at 4°C. Store at +4°C.
バッファー	pH: 7.2 Preservative: 0.02% Sodium azide Constituent: PBS
精製度	Immunogen affinity purified
ポリモノ	ポリクローナル
アイソタイプ	IgG

#### アプリケーション

The Abpromise guarantee

**Abpromise保証は、次のテスト済みアプリケーションにおけるab51560の使用に適用されます**

アプリケーションノートには、推奨の開始希釈率がありますが、適切な希釈率につきましてはご確認ください。

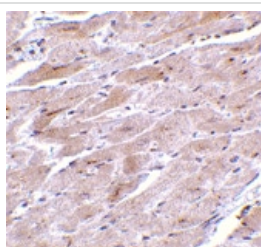
アプリケーション	Abreviews	特記事項
WB	★★★★☆ (1)	Use at an assay dependent concentration.
IHC-P	★★★★★ (1)	Use a concentration of 10 µg/ml.

## ターゲット情報

**関連性** TRPC channels form the subfamily of channels in human most closely related to drosophila TRP channels. Structurally, this family shares a number of similar characteristics. At the proximal C-terminus of this sub-family is a TRP box motif containing the invariant EWKFAR sequence and between 3 and 4 ankyrin repeats near the N-terminus. These channels are non-selectively permeable to cations, with a selectivity of calcium over sodium variable among the different members. Many of TRPC channel subunits are able to coassemble.

**細胞内局在** Cell Membrane; multi-pass membrane protein

## 画像



Immunohistochemistry of TRPC3 in mouse heart tissue with TRPC3 antibody ab51560 at 10 µg/ml.

Immunohistochemistry (Formalin/PFA-fixed paraffin-embedded sections) - Anti-TRPC3 antibody (ab51560)

**Please note:** All products are "FOR RESEARCH USE ONLY. NOT FOR USE IN DIAGNOSTIC PROCEDURES"

## Our Abpromise to you: Quality guaranteed and expert technical support

- Replacement or refund for products not performing as stated on the datasheet
- Valid for 12 months from date of delivery
- Response to your inquiry within 24 hours
- We provide support in Chinese, English, French, German, Japanese and Spanish
- Extensive multi-media technical resources to help you
- We investigate all quality concerns to ensure our products perform to the highest standards

If the product does not perform as described on this datasheet, we will offer a refund or replacement. For full details of the Abpromise, please visit <https://www.abcam.co.jp/abpromise> or contact our technical team.

## Terms and conditions

---

- Guarantee only valid for products bought direct from Abcam or one of our authorized distributors