


Anti-TROP2 antibody ab64320

★★★★★ [3 Abreviews](#) [画像数 1](#)

製品の概要

製品名	Anti-TROP2 antibody
製品の詳細	Rabbit polyclonal to TROP2
由来種	Rabbit
特異性	Reacts specifically with human 35 kDa TROP2 protein.
アプリケーション	適用あり: ICC/IF
種交差性	交差種: Human 交差が予測される動物種: Mouse, Rat, Pig, a wide range of other species 
免疫原	Synthetic peptide corresponding to Human TROP2 (C terminal).
特記事項	<p>The Life Science industry has been in the grips of a reproducibility crisis for a number of years. Abcam is leading the way in addressing this with our range of recombinant monoclonal antibodies and knockout edited cell lines for gold-standard validation. Please check that this product meets your needs before purchasing.</p> <p>If you have any questions, special requirements or concerns, please send us an inquiry and/or contact our Support team ahead of purchase. Recommended alternatives for this product can be found below, along with publications, customer reviews and Q&As</p>

製品の特性

製品の状態	Liquid
保存方法	Shipped at 4°C. Store at +4°C short term (1-2 weeks). Upon delivery aliquot. Store at -20°C long term.
バッファー	Constituent: Whole serum
精製度	Whole antiserum
ポリ/モノ	ポリクローナル
アイソタイプ	IgG

アプリケーション

The Abpromise guarantee

Abpromise保証は、次のテスト済みアプリケーションにおけるab64320の使用に適用されます

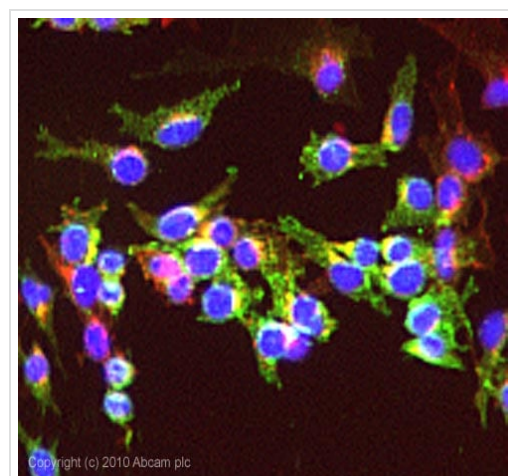
アプリケーションノートには、推奨の開始希釈率がありますが、適切な希釈率につきましてはご確認ください。

アプリケーション	Abreviews	特記事項
ICC/IF	★★★★★ (1)	Use a concentration of 5 µg/ml.

ターゲット情報

機能	May function as a growth factor receptor.
組織特異性	Placenta, pancreatic carcinoma cell lines.
関連疾患	Defects in TACSTD2 are the cause of gelatinous drop-like corneal dystrophy (GDLD) [MIM:204870]; also known as lattice corneal dystrophy type III. GDLD is an autosomal recessive disorder characterized by grayish corneal amyloid deposits that cause severe visual impairment.
配列類似性	Belongs to the EPCAM family. Contains 1 thyroglobulin type-1 domain.
翻訳後修飾	The N-terminus is blocked.
細胞内局在	Membrane.

画像



Copyright (c) 2010 Abcam plc

Immunocytochemistry/ Immunofluorescence - Anti-TROP2 antibody (ab64320)

ICC/IF image of ab64320 stained HepG2 cells. The cells were 100% methanol fixed (5 min) and then incubated in 1%BSA / 10% normal goat serum / 0.3M glycine in 0.1% PBS-Tween for 1h to permeabilise the cells and block non-specific protein-protein interactions. The cells were then incubated with the antibody (ab64320, 5µg/ml) overnight at +4°C. The secondary antibody (green) was Alexa Fluor® 488 goat anti-rabbit IgG (H+L) used at a 1/1000 dilution for 1h. Alexa Fluor® 594 WGA was used to label plasma membranes (red) at a 1/200 dilution for 1h. DAPI was used to stain the cell nuclei (blue) at a concentration of 1.43µM.

Please note: All products are "FOR RESEARCH USE ONLY. NOT FOR USE IN DIAGNOSTIC PROCEDURES"

Our Abpromise to you: Quality guaranteed and expert technical support

- Replacement or refund for products not performing as stated on the datasheet
- Valid for 12 months from date of delivery
- Response to your inquiry within 24 hours

- We provide support in Chinese, English, French, German, Japanese and Spanish
- Extensive multi-media technical resources to help you
- We investigate all quality concerns to ensure our products perform to the highest standards

If the product does not perform as described on this datasheet, we will offer a refund or replacement. For full details of the Abpromise, please visit <https://www.abcam.co.jp/abpromise> or contact our technical team.

Terms and conditions

- Guarantee only valid for products bought direct from Abcam or one of our authorized distributors