


Anti-TROP2 antibody ab58930

[1 References](#) [画像数 1](#)

製品の概要

製品名	Anti-TROP2 antibody
製品の詳細	Rabbit polyclonal to TROP2
由来種	Rabbit
アプリケーション	適用あり: WB
種交差性	交差種: Human 交差が予測される動物種: Pig 
免疫原	Synthetic peptide within Human TROP2 aa 150-250 conjugated to keyhole limpet haemocyanin. The exact sequence is proprietary. (Peptide available as ab94390)
ポジティブ・コントロール	WB: Recombinant Human TROP2 protein (ab114374), A549, PC3 and HeLa whole cell lysates.
特記事項	<p>The Life Science industry has been in the grips of a reproducibility crisis for a number of years. Abcam is leading the way in addressing this with our range of recombinant monoclonal antibodies and knockout edited cell lines for gold-standard validation. Please check that this product meets your needs before purchasing.</p> <p>If you have any questions, special requirements or concerns, please send us an inquiry and/or contact our Support team ahead of purchase. Recommended alternatives for this product can be found below, along with publications, customer reviews and Q&As</p>

製品の特性

製品の状態	Liquid
保存方法	Shipped at 4°C. Store at +4°C short term (1-2 weeks). Upon delivery aliquot. Store at -20°C or -80°C. Avoid freeze / thaw cycle.
バッファー	pH: 7.40 Preservative: 0.02% Sodium azide Constituent: PBS
精製度	Batches of this product that have a concentration < 1mg/ml may have BSA added as a stabilising agent. If you would like information about the formulation of a specific lot, please contact our scientific support team who will be happy to help. Immunogen affinity purified

ポリモノ
アイソタイプ

ポリクローナル
IgG

アプリケーション

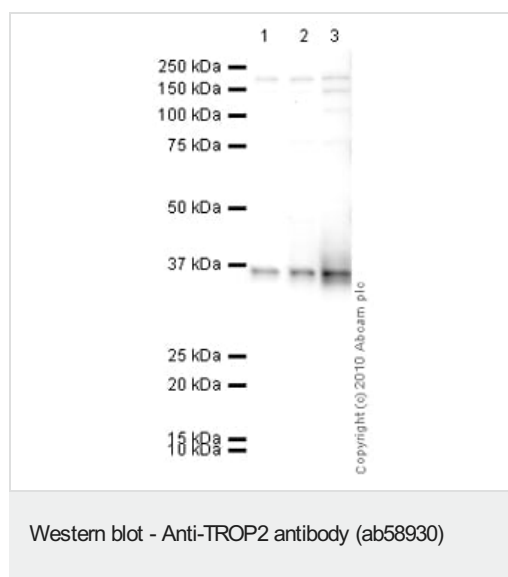
The Abpromise guarantee **Abpromise保証は、次のテスト済みアプリケーションにおけるab58930の使用に適用されます**
アプリケーションノートには、推奨の開始希釈率がありますが、適切な希釈率につきましてはご検討ください。

アプリケーション	Abreviews	特記事項
WB		Use a concentration of 1 µg/ml. Detects a band of approximately 36 kDa (predicted molecular weight: 36 kDa).

ターゲット情報

機能	May function as a growth factor receptor.
組織特異性	Placenta, pancreatic carcinoma cell lines.
関連疾患	Defects in TACSTD2 are the cause of gelatinous drop-like corneal dystrophy (GDLD) [MIM:204870]; also known as lattice corneal dystrophy type III. GDLD is an autosomal recessive disorder characterized by grayish corneal amyloid deposits that cause severe visual impairment.
配列類似性	Belongs to the EPCAM family. Contains 1 thyroglobulin type-1 domain.
翻訳後修飾	The N-terminus is blocked.
細胞内局在	Membrane.

画像



All lanes : Anti-TROP2 antibody (ab58930) at 1 µg/ml

Lane 1 : A549 (Human lung adenocarcinoma epithelial cell line)
Whole Cell Lysate

Lane 2 : PC3 (Human prostate carcinoma cell line) Whole Cell
Lysate Whole Cell Lysate

Lane 3 : HeLa (Human epithelial carcinoma cell line) Whole Cell
Lysate

Lysates/proteins at 10 µg per lane.

Secondary

All lanes : Goat polyclonal to Rabbit IgG - H&L - Pre-Adsorbed
(HRP) at 1/3000 dilution

Developed using the ECL technique.

Performed under reducing conditions.

Predicted band size: 36 kDa

Observed band size: 36 kDa

Exposure time: 5 minutes

Human Tumor-associated calcium signal transducer 2 precursor contains a number of potential glycosylation sites (SwissProt) which may explain the higher migration pattern observed.

Please note: All products are "FOR RESEARCH USE ONLY. NOT FOR USE IN DIAGNOSTIC PROCEDURES"

Our Abpromise to you: Quality guaranteed and expert technical support

- Replacement or refund for products not performing as stated on the datasheet
- Valid for 12 months from date of delivery
- Response to your inquiry within 24 hours
- We provide support in Chinese, English, French, German, Japanese and Spanish
- Extensive multi-media technical resources to help you
- We investigate all quality concerns to ensure our products perform to the highest standards

If the product does not perform as described on this datasheet, we will offer a refund or replacement. For full details of the Abpromise, please visit <https://www.abcam.co.jp/abpromise> or contact our technical team.

Terms and conditions

- Guarantee only valid for products bought direct from Abcam or one of our authorized distributors