

Anti-TRIM21/SS-A antibody ab119895

[1 Abreviews](#) [画像数 2](#)

製品の概要

製品名	Anti-TRIM21/SS-A antibody
製品の詳細	Rabbit polyclonal to TRIM21/SS-A
由来種	Rabbit
アプリケーション	適用あり: WB, IHC-P
種交差性	交差種: Human
免疫原	Recombinant fragment corresponding to Human TRIM21/SS-A aa 12-262 (internal sequence). Database link: BC010861
ポジティブ・コントロール	PG49, HeLa, MCF7, HEK293 cell lysates and Human fetal spleen lysate; Human fetal small intestine tissue.
特記事項	<p>The Life Science industry has been in the grips of a reproducibility crisis for a number of years. Abcam is leading the way in addressing this with our range of recombinant monoclonal antibodies and knockout edited cell lines for gold-standard validation. Please check that this product meets your needs before purchasing.</p> <p>If you have any questions, special requirements or concerns, please send us an inquiry and/or contact our Support team ahead of purchase. Recommended alternatives for this product can be found below, along with publications, customer reviews and Q&As</p>

製品の特性

製品の状態	Liquid
保存方法	Shipped at 4°C. Upon delivery aliquot and store at -20°C. Avoid repeated freeze / thaw cycles.
バッファー	pH: 7.20 Preservative: 0.02% Sodium azide Constituents: 98% PBS, 1% BSA
精製度	Immunogen affinity purified
特記事項 (精製)	ab119895 is purified by a protein affinity column.
ポリ/モノ	ポリクローナル
アイソタイプ	IgG

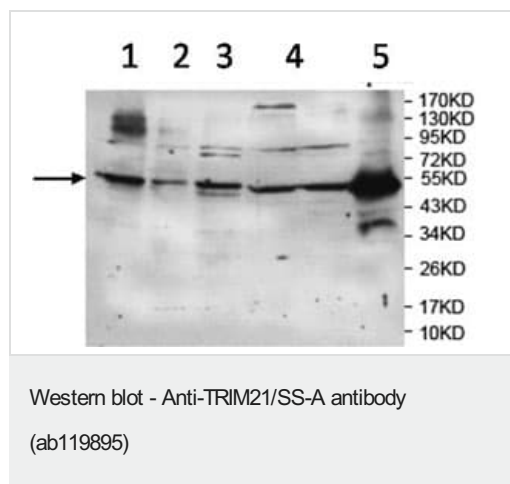
アプリケーション

The Abpromise guarantee **Abpromise保証は、**次のテスト済みアプリケーションにおけるab119895の使用に適用されます
 アプリケーションノートには、推奨の開始希釈率がありますが、適切な希釈率につきましてはご検討ください。

アプリケーション	Abreviews	特記事項
WB		1/500 - 1/1000. Detects a band of approximately 54 kDa (predicted molecular weight: 45, 54 kDa).
IHC-P		1/100 - 1/500.

ターゲット情報

機能	E3 ubiquitin-protein ligase whose activity is dependent on E2 enzymes, UBE2D1, UBE2D2, UBE2E1 and UBE2E2. Forms a ubiquitin ligase complex in cooperation with the E2 UBE2D2 that is used not only for the ubiquitination of USP4 and IKBKB but also for its self-ubiquitination. Component of cullin-RING-based SCF (SKP1-CUL1-F-box protein) E3 ubiquitin-protein ligase complexes such as SCF(SKP2)-like complexes. A TRIM21-containing SCF(SKP2)-like complex is shown to mediate ubiquitination of CDKN1B ('Thr-187' phosphorylated-form), thereby promoting its degradation by the proteasome. Monoubiquitinates IKBKB that will negatively regulates Tax-induced NF-kappa-B signaling. Negatively regulates IFN-beta production post-pathogen recognition by polyubiquitin-mediated degradation of IRF3. Mediates the ubiquitin-mediated proteasomal degradation of IgG1 heavy chain, which is linked to the VCP-mediated ER-associated degradation (ERAD) pathway. Promotes IRF8 ubiquitination, which enhanced the ability of IRF8 to stimulate cytokine genes transcription in macrophages. Plays a role in the regulation of the cell cycle progression. Enhances the decapping activity of DCP2. Exists as a ribonucleoprotein particle present in all mammalian cells studied and composed of a single polypeptide and one of four small RNA molecules. At least two isoforms are present in nucleated and red blood cells, and tissue specific differences in RO/SSA proteins have been identified. The common feature of these proteins is their ability to bind HY RNAs.2.
組織特異性	Isoforms 1 and 2 are expressed in fetal and adult heart and fetal lung.
パスウェイ	Protein modification; protein ubiquitination.
配列類似性	Belongs to the TRIM/RBCC family. Contains 1 B box-type zinc finger. Contains 1 B30.2/SPRY domain. Contains 1 RING-type zinc finger.
ドメイン	The coiled-coil is necessary for the cytoplasmic localization. The B30.2/SPRY domain is necessary for the cytoplasmic localization, the interaction with IRF3 and for the IRF3-driven interferon beta promoter activity. The RING-type zinc finger is necessary for ubiquitination and for the IRF3-driven interferon beta promoter activity. Interacts with SKP2 and CUL1 in a RING finger-independent manner.
翻訳後修飾	Autoubiquitinated; does not lead to its proteasomal degradation. Deubiquitinated by USP4; leading to its stabilization.
細胞内局在	Cytoplasm. Nucleus. Cytoplasm > P-body. Enters the nucleus upon exposure to nitric oxide. Localizes to small dot- or rod-like structures in the cytoplasm, called cytoplasmic bodies (P-body) that are located underneath the plasma membrane and also diffusely in the cytoplasm and are highly motil in cells. Cytoplasmic bodies are located along the microtubules and do not share the same cytoplasmic bodies with TRIM5. Colocalizes with DCP2 in P-body.



All lanes : Anti-TRIM21/SS-A antibody (ab119895) at 1/500 dilution

Lane 1 : PG49 cell lysate

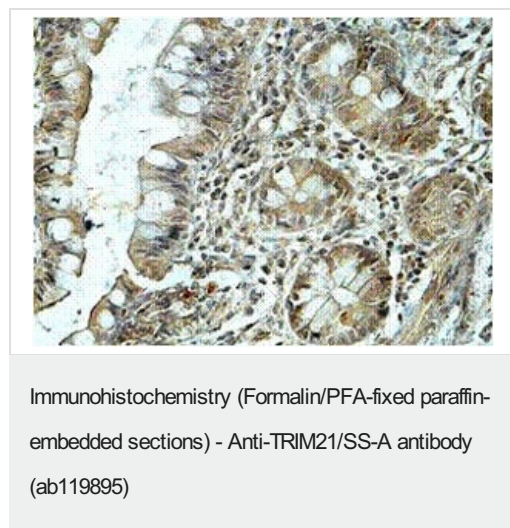
Lane 2 : HeLa cell lysate

Lane 3 : MCF7 cell lysate

Lane 4 : HEK293 cell lysate

Lane 5 : Human fetal spleen lysate

Predicted band size: 45, 54 kDa



ab119895 at 1/100 dilution staining SSA1 in Formalin-fixed, Paraffin-embedded Human fetal small intestine tissue by Immunohistochemistry.

Please note: All products are "FOR RESEARCH USE ONLY. NOT FOR USE IN DIAGNOSTIC PROCEDURES"

Our Abpromise to you: Quality guaranteed and expert technical support

- Replacement or refund for products not performing as stated on the datasheet
- Valid for 12 months from date of delivery
- Response to your inquiry within 24 hours
- We provide support in Chinese, English, French, German, Japanese and Spanish
- Extensive multi-media technical resources to help you
- We investigate all quality concerns to ensure our products perform to the highest standards

If the product does not perform as described on this datasheet, we will offer a refund or replacement. For full details of the Abpromise, please visit <https://www.abcam.co.jp/abpromise> or contact our technical team.

Terms and conditions

- Guarantee only valid for products bought direct from Abcam or one of our authorized distributors