


Anti-TRIM16 antibody ab72129

[2 References](#) [画像数 2](#)

製品の概要

製品名	Anti-TRIM16 antibody
製品の詳細	Rabbit polyclonal to TRIM16
由来種	Rabbit
アプリケーション	適用あり: WB, IP
種交差性	交差種: Mouse, Human 交差が予測される動物種: Horse, Guinea pig, Cow, Chimpanzee, Rhesus monkey, Gorilla, Orangutan, Bat, Elephant 
免疫原	Synthetic peptide corresponding to a region between residues 1 and 50 of human TRIM16, NP_006461.3.
ポジティブ・コントロール	Whole cell lysate from Hela, 293T and NIH 3T3 cells.
特記事項	<p>The Life Science industry has been in the grips of a reproducibility crisis for a number of years. Abcam is leading the way in addressing this with our range of recombinant monoclonal antibodies and knockout edited cell lines for gold-standard validation. Please check that this product meets your needs before purchasing.</p> <p>If you have any questions, special requirements or concerns, please send us an inquiry and/or contact our Support team ahead of purchase. Recommended alternatives for this product can be found below, along with publications, customer reviews and Q&As</p>

製品の特性

製品の状態	Liquid
保存方法	Shipped at 4°C. Upon delivery aliquot and store at -20°C. Avoid freeze / thaw cycles.
バッファー	pH: 6.8 Preservative: 0.09% Sodium azide Constituents: 0.1% BSA, Tris buffered saline
精製度	Immunogen affinity purified
ポリ/モノ	ポリクローナル
アイソタイプ	IgG

アプリケーション

The Abpromise guarantee **Abpromise保証は、次のテスト済みアプリケーションにおけるab72129の使用に適用されます**

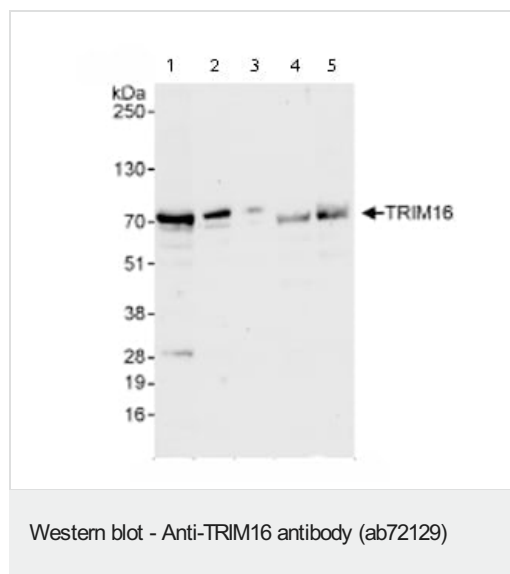
アプリケーションノートには、推奨の開始希釈率がありますが、適切な希釈率につきましてはご検討ください。

アプリケーション	Abreviews	特記事項
WB		1/2000 - 1/10000. Detects a band of approximately 70 kDa (predicted molecular weight: 64 kDa).
IP		Use at 2-5 µg/mg of lysate.

ターゲット情報

機能	May play a role in the regulation of keratinocyte differentiation.
組織特異性	Highest levels found in testis, ovary, small intestine, colon, placenta, heart, skeletal muscle and mammary gland. More highly expressed in the fetus than in the corresponding adult tissues. Expressed in basal keratinocytes.
配列類似性	Belongs to the TRIM/RBCC family. Contains 2 B box-type zinc fingers. Contains 1 B30.2/SPRY domain.
細胞内局在	Cytoplasm.

画像



All lanes : Anti-TRIM16 antibody (ab72129) at 0.04 µg/ml

Lane 1 : Whole cell lysate from HeLa cells at 50 µg

Lane 2 : Whole cell lysate from HeLa cells at 15 µg

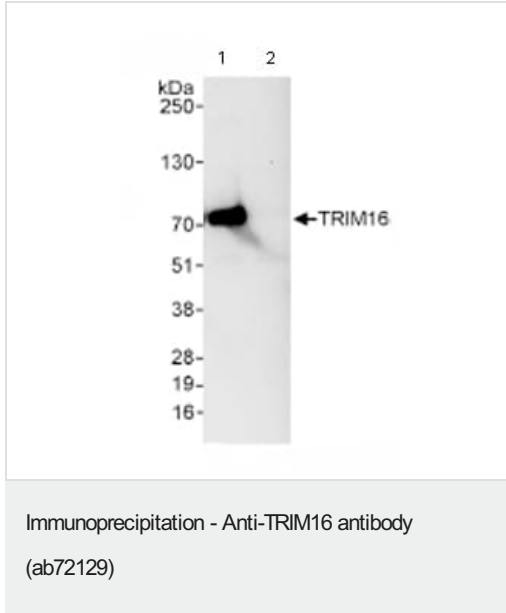
Lane 3 : Whole cell lysate from HeLa cells at 5 µg

Lane 4 : Whole cell lysate from 293T cells at 50 µg

Lane 5 : Whole cell lysate from NIH3T3 cells at 50 µg

Predicted band size: 64 kDa

Observed band size: 70 kDa



Immunoprecipitation/ Western Blot of TRIM16.

Lane 1: ab72129 at 3µg/mg whole cell lysate.

Lane 2: Control IgG.

ab72129 at 1µg/ml for WB.

Whole cell lysate from Hela cells at 1mg for IP, 20% of IP loaded.

Detection: Chemiluminescence with an exposure time of 10 seconds.

Please note: All products are "FOR RESEARCH USE ONLY. NOT FOR USE IN DIAGNOSTIC PROCEDURES"

Our Abpromise to you: Quality guaranteed and expert technical support

- Replacement or refund for products not performing as stated on the datasheet
- Valid for 12 months from date of delivery
- Response to your inquiry within 24 hours
- We provide support in Chinese, English, French, German, Japanese and Spanish
- Extensive multi-media technical resources to help you
- We investigate all quality concerns to ensure our products perform to the highest standards

If the product does not perform as described on this datasheet, we will offer a refund or replacement. For full details of the Abpromise, please visit <https://www.abcam.co.jp/abpromise> or contact our technical team.

Terms and conditions

- Guarantee only valid for products bought direct from Abcam or one of our authorized distributors