

### Anti-TRIB3 antibody [EPR3151Y] ab75846

KO 評価済 リコンビナント RabMAb

★★★★★ [1 Abreviews](#) [17 References](#) [画像数 4](#)

#### 製品の概要

製品名	Anti-TRIB3 antibody [EPR3151Y]
製品の詳細	Rabbit monoclonal [EPR3151Y] to TRIB3
由来種	Rabbit
アプリケーション	<b>適用あり:</b> WB, IP <b>適用なし:</b> Flow Cyt, ICC/IF or IHC-P
種交差性	<b>交差種:</b> Human
免疫原	Synthetic peptide. This information is proprietary to Abcam and/or its suppliers.
ポジティブ・コントロール	WB: HCT116 cell lysates; 293T cell lysates, untreated and treated with Ionomycin and TPA. IP: 293T.
特記事項	<p>This product is a recombinant monoclonal antibody, which offers several advantages including:</p> <ul style="list-style-type: none"><li>- High batch-to-batch consistency and reproducibility</li><li>- Improved sensitivity and specificity</li><li>- Long-term security of supply</li><li>- Animal-free production</li></ul> <p>For more information <a href="#">see here</a>.</p> <p>Our RabMAb<sup>®</sup> technology is a patented hybridoma-based technology for making rabbit monoclonal antibodies. For details on our patents, please refer to <a href="#">RabMAb<sup>®</sup> patents</a>.</p> <p>Mouse, Rat: We have preliminary internal testing data to indicate this antibody may not react with these species. Please contact us for more information.</p>

#### 製品の特性

製品の状態	Liquid
保存方法	Shipped at 4°C. Store at -20°C. Stable for 12 months at -20°C.
バッファー	pH: 7.20 Preservative: 0.05% Sodium azide Constituents: 0.1% BSA, 40% Glycerol (glycerin, glycerine), 9.85% Tris glycine, 50% Tissue culture supernatant
精製度	Protein A purified

ポリモノ	モノクローナル
クローン名	EPR3151Y
アイソタイプ	IgG

## アプリケーション

**The Abpromise guarantee** **Abpromise保証は、次のテスト済みアプリケーションにおけるab75846の使用に適用されます**  
 アプリケーションノートには、推奨の開始希釈率がありますが、適切な希釈率につきましてはご検討ください。

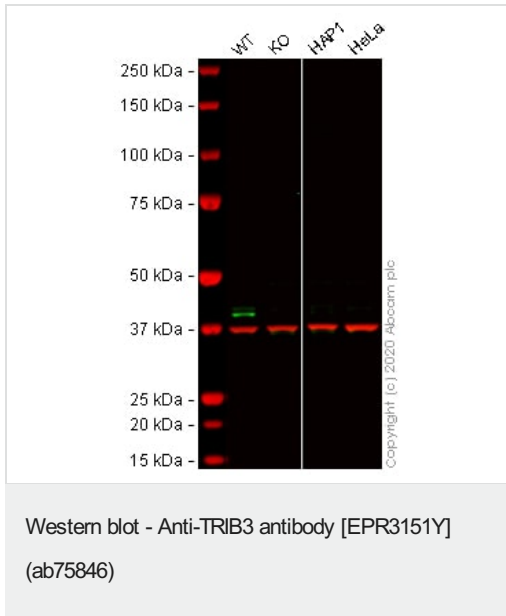
アプリケーション	Abreviews	特記事項
WB	★★★★★ (1)	1/5000 - 1/20000. Detects a band of approximately 40 kDa (predicted molecular weight: 40 kDa).
IP		1/10.

**追加情報** Is unsuitable for Flow Cyt, ICC/IF or IHC-P.

## ターゲット情報

<b>機能</b>	Disrupts insulin signaling by binding directly to Akt kinases and blocking their activation. May bind directly to and mask the 'Thr-308' phosphorylation site in AKT1. Binds to ATF4 and inhibits its transcriptional activation activity. Interacts with the NF-kappa-B transactivator p65 RELA and inhibits its phosphorylation and thus its transcriptional activation activity. Interacts with MAPK kinases and regulates activation of MAP kinases. May play a role in programmed neuronal cell death but does not appear to affect non-neuronal cells. Does not display kinase activity.
<b>組織特異性</b>	Highest expression in liver, pancreas, peripheral blood leukocytes and bone marrow. Also highly expressed in a number of primary lung, colon and breast tumors. Expressed in spleen, thymus, and prostate and is undetectable in other examined tissues, including testis, ovary, small intestine, colon, leukocyte, heart, brain, placenta, lung, skeletal muscle, and kidney.
<b>配列類似性</b>	Belongs to the protein kinase superfamily. CAMK Ser/Thr protein kinase family. Tribbles subfamily. Contains 1 protein kinase domain.
<b>細胞内局在</b>	Nucleus.

## 画像



**All lanes :** Anti-TRIB3 antibody [EPR3151Y] (ab75846) at 1/10000 dilution

**Lane 1 :** Wild-type HCT116 cell lysate

**Lane 2 :** TRIB3 knockout HCT116 cell lysate

**Lane 3 :** Hap1 cell lysate

**Lane 4 :** HeLa cell lysate

Lysates/proteins at 20 µg per lane.

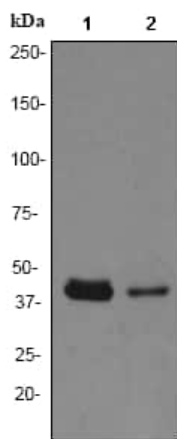
Performed under reducing conditions.

**Predicted band size:** 40 kDa

**Observed band size:** 40 kDa

**Lanes 1 - 4:** Merged signal (red and green). Green - ab75846 observed at 40 kDa. Red - loading control **ab8245** (Mouse anti-GAPDH antibody [6C5]) observed at 37kDa.

ab75846 was shown to react with TRIB3 in HCT 116 wild-type cells in western blot with loss of signal observed in TRIB3 knockout cell line **ab273718** (TRIB3 knockout cell lysate **ab275249**). HCT 116 wild-type and TRIB3 knockout cell lysates were subjected to SDS-PAGE. Membranes were blocked in 3% milk in TBS-T (0.1% Tween<sup>®</sup>) before incubation with ab75846 and **ab8245** (Mouse anti-GAPDH antibody [6C5]) overnight at 4°C at a 1 in 10000 dilution and a 1 in 20000 dilution respectively. Blots were incubated with Goat anti-Rabbit IgG H&L (IRDye<sup>®</sup> 800CW) preabsorbed (**ab216773**) and Goat anti-Mouse IgG H&L (IRDye<sup>®</sup> 680RD) preabsorbed (**ab216776**) secondary antibodies at 1 in 20000 dilution for 1 hour at room temperature before imaging.



Western blot - Anti-TRIB3 antibody [EPR3151Y] (ab75846)

**All lanes :** Anti-TRIB3 antibody [EPR3151Y] (ab75846) at 1/10000 dilution

**Lane 1 :** 293T cell lysates, treated with Ionomycin and TPA

**Lane 2 :** 293T cell lysates, untreated

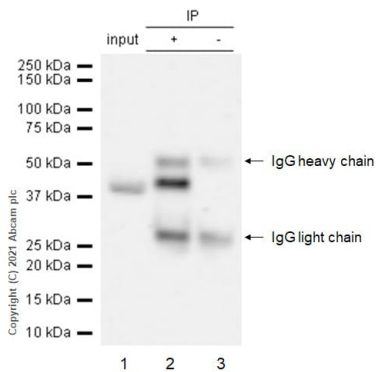
Lysates/proteins at 10 µg per lane.

**Secondary**

**All lanes :** HRP labelled goat anti-rabbit at 1/2000 dilution

**Predicted band size:** 40 kDa

**Observed band size:** 40 kDa



Immunoprecipitation - Anti-TRIB3 antibody [EPR3151Y] (ab75846)

TRIB3 was immunoprecipitated from 0.35 mg 293T (Human embryonic kidney epithelial cell) whole cell lysate 10 µg with 75846 at 1/50 dilution (2µg). VeriBlot for IP Detection Reagent (HRP) ([ab131366](#)) was used at 1/5000 dilution.





**Lane 1:** 293T (Human embryonic kidney epithelial cell) whole cell lysate 10 µg

**Lane 2:** ab75846 IP in 293T whole cell lysate

**Lane 3:** Rabbit monoclonal IgG ([ab172730](#)) instead of ab75846 in 293T whole cell lysate

Blocking and dilution buffer and concentration: 5% NFDm/TBST.

Why choose a recombinant antibody?

 <p><b>Research with confidence</b> Consistent and reproducible results</p>	 <p><b>Long-term and scalable supply</b> Recombinant technology</p>
 <p><b>Success from the first experiment</b> Confirmed specificity</p>	 <p><b>Ethical standards compliant</b> Animal-free production</p>

Anti-TRIB3 antibody [EPR3151Y] (ab75846)

**Please note:** All products are "FOR RESEARCH USE ONLY. NOT FOR USE IN DIAGNOSTIC PROCEDURES"

### Our Abpromise to you: Quality guaranteed and expert technical support

---

- Replacement or refund for products not performing as stated on the datasheet
- Valid for 12 months from date of delivery
- Response to your inquiry within 24 hours
- We provide support in Chinese, English, French, German, Japanese and Spanish
- Extensive multi-media technical resources to help you
- We investigate all quality concerns to ensure our products perform to the highest standards

If the product does not perform as described on this datasheet, we will offer a refund or replacement. For full details of the Abpromise, please visit <https://www.abcam.co.jp/abpromise> or contact our technical team.

### Terms and conditions

---

- Guarantee only valid for products bought direct from Abcam or one of our authorized distributors