


Anti-TREX1 antibody ab83890

2 References **画像数 3**

製品の概要

| | |
|----------|--|
| 製品名 | Anti-TREX1 antibody |
| 製品の詳細 | Rabbit polyclonal to TREX1 |
| 由来種 | Rabbit |
| 特異性 | This antibody will not cross-react with the related protein TREX2. |
| アプリケーション | 適用あり: ICC/IF, WB, IHC-P |
| 種交差性 | 交差種: Human 交差が予測される動物種: Mouse  |
| 免疫原 | Synthetic peptide. This information is proprietary to Abcam and/or its suppliers. |
| 特記事項 | <p>The mouse cross reactivity is lot specific. Please contact technical team for more information.</p> <p>The Life Science industry has been in the grips of a reproducibility crisis for a number of years. Abcam is leading the way in addressing this with our range of recombinant monoclonal antibodies and knockout edited cell lines for gold-standard validation. Please check that this product meets your needs before purchasing.</p> <p>If you have any questions, special requirements or concerns, please send us an inquiry and/or contact our Support team ahead of purchase. Recommended alternatives for this product can be found below, along with publications, customer reviews and Q&As</p> |

製品の特性

| | |
|--------|---|
| 製品の状態 | Liquid |
| 保存方法 | Shipped at 4°C. Store at +4°C. |
| バッファー | pH: 7.2 Preservative: 0.02% Sodium azide Constituent: PBS |
| 精製度 | Immunogen affinity purified |
| ポリ/モノ | ポリクローナル |
| アイソタイプ | IgG |

アプリケーション

The Abpromise guarantee

Abpromise保証は、次のテスト済みアプリケーションにおけるab83890の使用に適用されます

アプリケーションノートには、推奨の開始希釈率がありますが、適切な希釈率につきましてはご確認ください。

| アプリケーション | Abreviews | 特記事項 |
|----------|-----------|--|
| ICC/IF | | Use a concentration of 20 µg/ml. |
| WB | | Use a concentration of 1 - 2 µg/ml. Detects a band of approximately 31 kDa (predicted molecular weight: 39 kDa). |
| IHC-P | | Use a concentration of 2.5 µg/ml. |

ターゲット情報

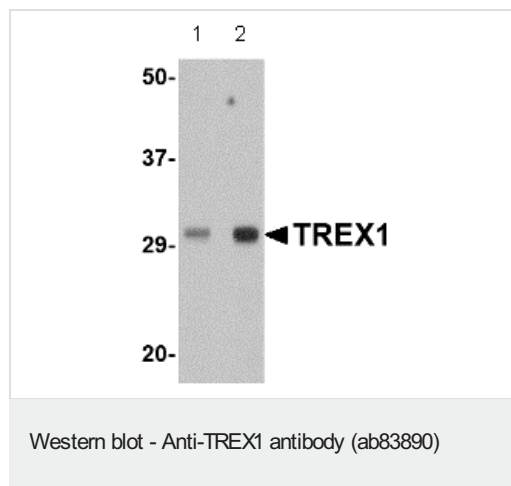
関連性

TREX1 is the major 3'→5' DNA exonuclease in human cells. The protein is a non processive exonuclease that may serve a proofreading function for a human DNA polymerase. It is also a component of the SET complex, and acts to rapidly degrade 3' ends of nicked DNA during granzyme A mediated cell death. Mutations in this gene result in Aicardi Goutieres syndrome, chilblain lupus, and Cree encephalitis. Multiple transcript variants encoding different isoforms have been found for this gene.

細胞内局在

Cytoplasmic, Endoplasmic reticulum and Nuclear

画像



Lane 1 : Anti-TREX1 antibody (ab83890) at 0.5 µg/ml

Lane 2 : Anti-TREX1 antibody (ab83890) at 1 µg/ml

All lanes : Human spleen tissue lysate

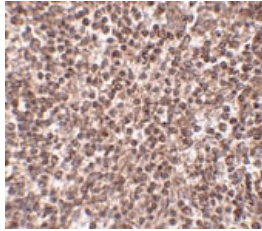
Lysates/proteins at 15 µg per lane.

Secondary

All lanes : anti-rabbit secondary

Predicted band size: 39 kDa

Observed band size: 31 kDa



ab83890 at 2.5µg/ml staining TREX1 in Human spleen tissue.

Immunohistochemistry (Formalin/PFA-fixed paraffin-embedded sections) - Anti-TREX1 antibody (ab83890)

Immunocytochemistry/ Immunofluorescence - Anti-TREX1 antibody (ab83890)

Immunofluorescence of TREX1 in Human Spleen cells using ab83890 at 20 ug/ml.

Please note: All products are "FOR RESEARCH USE ONLY. NOT FOR USE IN DIAGNOSTIC PROCEDURES"

Our Abpromise to you: Quality guaranteed and expert technical support

- Replacement or refund for products not performing as stated on the datasheet
- Valid for 12 months from date of delivery
- Response to your inquiry within 24 hours
- We provide support in Chinese, English, French, German, Japanese and Spanish
- Extensive multi-media technical resources to help you
- We investigate all quality concerns to ensure our products perform to the highest standards

If the product does not perform as described on this datasheet, we will offer a refund or replacement. For full details of the Abpromise, please visit <https://www.abcam.co.jp/abpromise> or contact our technical team.

Terms and conditions

- Guarantee only valid for products bought direct from Abcam or one of our authorized distributors