


Anti-TRAPPC2 antibody [EPR3401] ab111848

リコンビナント **RabMAb**

1 References [画像数 2](#)

製品の概要

製品名	Anti-TRAPPC2 antibody [EPR3401]
製品の詳細	Rabbit monoclonal [EPR3401] to TRAPPC2
由来種	Rabbit
アプリケーション	適用あり: WB 適用なし: Flow Cyt, ICC/IF, IHC-P or IP
種交差性	交差種: Human 交差が予測される動物種: Mouse, Rat 
免疫原	Synthetic peptide. This information is proprietary to Abcam and/or its suppliers.
ポジティブ・コントロール	Human spleen, Raji, and Daudi cell lysates.
特記事項	This product is a recombinant monoclonal antibody, which offers several advantages including: <ul style="list-style-type: none"> - High batch-to-batch consistency and reproducibility - Improved sensitivity and specificity - Long-term security of supply - Animal-free production For more information see here . Our RabMAb [®] technology is a patented hybridoma-based technology for making rabbit monoclonal antibodies. For details on our patents, please refer to RabMAb[®] patents .

製品の特性

製品の状態	Liquid
保存方法	Shipped at 4°C. Store at -20°C. Stable for 12 months at -20°C.
バッファー	pH: 7.20 Preservative: 0.05% Sodium azide Constituents: 0.1% BSA, 40% Glycerol (glycerin, glycerine), 9.85% Tris glycine, 50% Tissue culture supernatant
精製度	Protein A purified
ポリ/モノ	モノクローナル
クローン名	EPR3401

アイソタイプ

IgG

アプリケーション

The Abpromise guarantee

Abpromise保証は、次のテスト済みアプリケーションにおけるab111848の使用に適用されます

アプリケーションノートには、推奨の開始希釈率がありますが、適切な希釈率につきましてはご検討ください。

アプリケーション	Abreviews	特記事項
WB		1/1000 - 1/10000. Predicted molecular weight: 16 kDa.

追加情報

Is unsuitable for Flow Cyt, ICC/IF, IHC-P or IP.

ターゲット情報

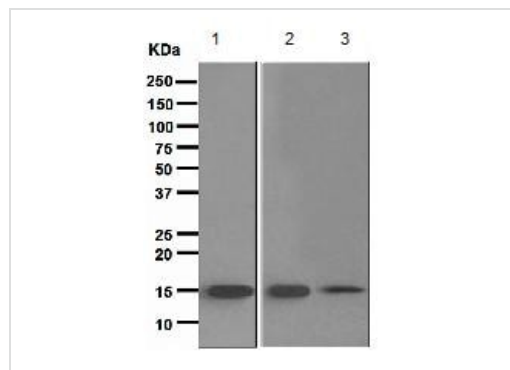
関連性

Function: Prevents MBP1-mediated transcriptional repression and antagonizes MBP1-mediated cell death. May play a role in vesicular transport from endoplasmic reticulum to Golgi. Tissue specificity: Widely expressed. Disease: Defects in TRAPPC2 are the cause of spondyloepiphyseal dysplasia tarda (SED) [MIM:313400]. SED is an X-linked recessive disorder of endochondral bone formation. Similarity: Belongs to the TRAPP small subunits family. Sedlin subfamily.

細胞内局在

Cytoplasm > perinuclear region. Endoplasmic reticulum. Golgi apparatus. Localized in perinuclear granular structures.

画像



Western blot - Anti-TRAPPC2 antibody [EPR3401] (ab111848)

All lanes : Anti-TRAPPC2 antibody [EPR3401] (ab111848) at 1/1000 dilution

Lane 1 : Human spleen cell lysate

Lane 2 : Raji cell lysate

Lane 3 : Daudi cell lysate

Lysates/proteins at 10 µg per lane.

Predicted band size: 16 kDa

Why choose a recombinant antibody?



Research with confidence
Consistent and reproducible results



Long-term and scalable supply
Recombinant technology



Success from the first experiment
Confirmed specificity



Ethical standards compliant
Animal-free production

Anti-TRAPPC2 antibody [EPR3401] (ab111848)

Please note: All products are "FOR RESEARCH USE ONLY. NOT FOR USE IN DIAGNOSTIC PROCEDURES"

Our Abpromise to you: Quality guaranteed and expert technical support

- Replacement or refund for products not performing as stated on the datasheet
- Valid for 12 months from date of delivery
- Response to your inquiry within 24 hours
- We provide support in Chinese, English, French, German, Japanese and Spanish
- Extensive multi-media technical resources to help you
- We investigate all quality concerns to ensure our products perform to the highest standards

If the product does not perform as described on this datasheet, we will offer a refund or replacement. For full details of the Abpromise, please visit <https://www.abcam.co.jp/abpromise> or contact our technical team.

Terms and conditions

- Guarantee only valid for products bought direct from Abcam or one of our authorized distributors