

Anti-TRAP1 antibody [EPR5381] ab109323

リコンビナント **RabMAb**

3 References **画像数 4**

製品の概要

製品名	Anti-TRAP1 antibody [EPR5381]
製品の詳細	Rabbit monoclonal [EPR5381] to TRAP1
由来種	Rabbit
アプリケーション	適用あり: WB, IHC-P 適用なし: Flow Cyt or IP
種交差性	交差種: Human
免疫原	Synthetic peptide. This information is proprietary to Abcam and/or its suppliers.
ポジティブ・コントロール	WB: K562, HL60, 293T and HeLa cell lysates IHC-P: Human kidney and liver tissues
特記事項	<p>This product is a recombinant monoclonal antibody, which offers several advantages including:</p> <ul style="list-style-type: none"> - High batch-to-batch consistency and reproducibility - Improved sensitivity and specificity - Long-term security of supply - Animal-free production <p>For more information see here.</p> <p>Our RabMAb[®] technology is a patented hybridoma-based technology for making rabbit monoclonal antibodies. For details on our patents, please refer to RabMAb[®] patents.</p> <p>Mouse, Rat: We have preliminary internal testing data to indicate this antibody may not react with these species. Please contact us for more information.</p>

製品の特性

製品の状態	Liquid
保存方法	Shipped at 4°C. Store at -20°C. Stable for 12 months at -20°C.
バッファー	<p>pH: 7.20</p> <p>Preservative: 0.05% Sodium azide</p> <p>Constituents: 0.1% BSA, 40% Glycerol (glycerin, glycerine), 9.85% Tris glycine, 50% Tissue culture supernatant</p>
精製度	Protein A purified
ポリ/モノ	モノクローナル

クローン名EPR5381
アイソタイプIgG

アプリケーション

The Abpromise guarantee Abpromise保証は、 次のテスト済みアプリケーションにおけるab109323の使用に適用されます
アプリケーションノートには、推奨の開始希釈率がありますが、適切な希釈率につきましてはご検討ください。

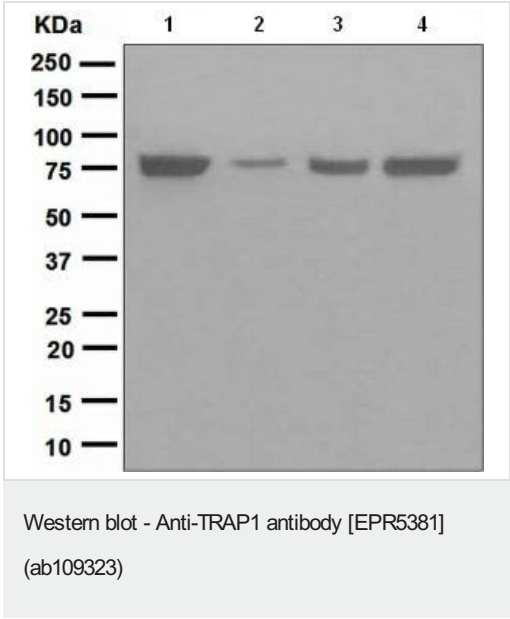
アプリケーション	Abreviews	特記事項
WB		1/10000 - 1/50000. Detects a band of approximately 75 kDa (predicted molecular weight: 80 kDa).
IHC-P		1/100 - 1/250. Perform heat mediated antigen retrieval before commencing with IHC staining protocol.

追加情報Is unsuitable for Flow Cyt or IP.

ターゲット情報

機能Chaperone that expresses an ATPase activity.
組織特異性Found in skeletal muscle, liver, heart, brain, kidney, pancreas, lung and placenta.
配列類似性Belongs to the heat shock protein 90 family.
細胞内局在Mitochondrion.

画像



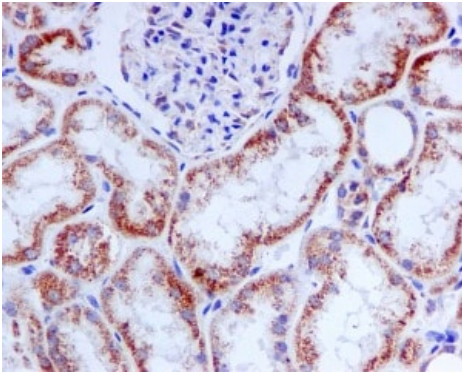
All lanes : Anti-TRAP1 antibody [EPR5381] (ab109323) at 1/10000 dilution

Lane 1 : K562 cell lysate
Lane 2 : HL60 cell lysate
Lane 3 : 293T (Human embryonic kidney epithelial cell) cell lysate
Lane 4 : HeLa cell lysate

Lysates/proteins at 10 µg per lane.

Secondary
All lanes : HRP labelled goat anti-rabbit at 1/2000 dilution

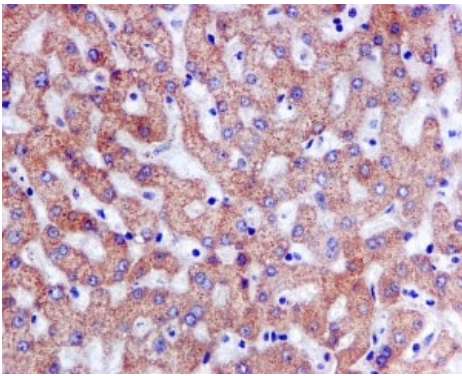
Predicted band size: 80 kDa
Observed band size: 75 kDa



Immunohistochemistry (Formalin/PFA-fixed paraffin-embedded sections) - Anti-TRAP1 antibody [EPR5381] (ab109323)

ab109323, at a 1/100 dilution, staining TRAP1 in paraffin embedded Human kidney tissue by Immunohistochemistry.

Perform heat mediated antigen retrieval before commencing with IHC staining protocol.



Immunohistochemistry (Formalin/PFA-fixed paraffin-embedded sections) - Anti-TRAP1 antibody [EPR5381] (ab109323)

ab109323, at a 1/100 dilution, staining TRAP1 in paraffin embedded Human liver tissue by Immunohistochemistry.

Perform heat mediated antigen retrieval before commencing with IHC staining protocol.

Why choose a recombinant antibody?



Research with confidence
Consistent and reproducible results



Long-term and scalable supply
Recombinant technology



Success from the first experiment
Confirmed specificity



Ethical standards compliant
Animal-free production

Anti-TRAP1 antibody [EPR5381] (ab109323)

Please note: All products are "FOR RESEARCH USE ONLY. NOT FOR USE IN DIAGNOSTIC PROCEDURES"

Our Abpromise to you: Quality guaranteed and expert technical support

- Replacement or refund for products not performing as stated on the datasheet
- Valid for 12 months from date of delivery
- Response to your inquiry within 24 hours

- We provide support in Chinese, English, French, German, Japanese and Spanish
- Extensive multi-media technical resources to help you
- We investigate all quality concerns to ensure our products perform to the highest standards

If the product does not perform as described on this datasheet, we will offer a refund or replacement. For full details of the Abpromise, please visit <https://www.abcam.co.jp/abpromise> or contact our technical team.

Terms and conditions

- Guarantee only valid for products bought direct from Abcam or one of our authorized distributors