


Anti-TRAIL antibody ab9959

★★★★★ [1 Abreviews](#) [13 References](#) [画像数 1](#)

製品の概要

製品名	Anti-TRAIL antibody
製品の詳細	Rabbit polyclonal to TRAIL
由来種	Rabbit
アプリケーション	適用あり: Sandwich ELISA
種交差性	交差種: Recombinant fragment 交差が予測される動物種: Human 
免疫原	Recombinant fragment corresponding to Human TRAIL aa 100 to the C-terminus. Highly pure (>98%). E.coli derived Database link: P50591 Run BLAST with Run BLAST with
特記事項	Although some customers have been successful in IHC we no longer batch test in this application. The Life Science industry has been in the grips of a reproducibility crisis for a number of years. Abcam is leading the way in addressing this with our range of recombinant monoclonal antibodies and knockout edited cell lines for gold-standard validation. Please check that this product meets your needs before purchasing. If you have any questions, special requirements or concerns, please send us an inquiry and/or contact our Support team ahead of purchase. Recommended alternatives for this product can be found below, along with publications, customer reviews and Q&As

製品の特性

製品の状態	Lyophilized:Reconstitute with 200µl of sterile water.
保存方法	Shipped at 4°C. Store at +4°C short term (1-2 weeks). Upon delivery aliquot. Store at -20°C long term.
精製度	Immunogen affinity purified
ポリ/モノ	ポリクローナル
アイソタイプ	IgG

アプリケーション

The Abpromise guarantee

Abpromise保証は、次のテスト済みアプリケーションにおけるab9959の使用に適用されず

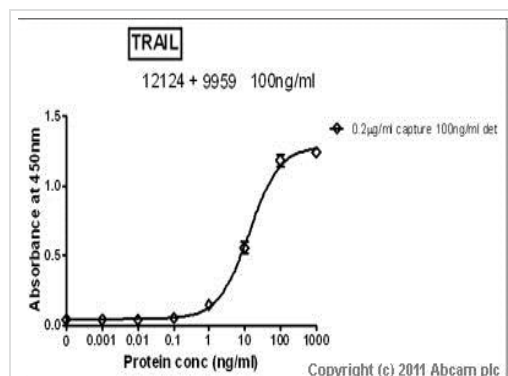
アプリケーションノートには、推奨の開始希釈率がありますが、適切な希釈率につきましてはご検討ください。

アプリケーション	Abreviews	特記事項
Sandwich ELISA		Use a concentration of 0.1 µg/ml. To detect TRAIL by sandwich ELISA (using 100 µl/well antibody solution) a concentration of 0.5 - 2.0 µg/ml of this antibody is required. This antigen affinity purified antibody, in conjunction with ab12124 as a detection antibody, allows the detection of at least 0.2 - 0.4 ng/well of recombinant TRAIL.

ターゲット情報

機能	Cytokine that binds to TNFRSF10A/TRAILR1, TNFRSF10B/TRAILR2, TNFRSF10C/TRAILR3, TNFRSF10D/TRAILR4 and possibly also to TNFRSF11B/OPG. Induces apoptosis. Its activity may be modulated by binding to the decoy receptors TNFRSF10C/TRAILR3, TNFRSF10D/TRAILR4 and TNFRSF11B/OPG that cannot induce apoptosis.
組織特異性	Widespread; most predominant in spleen, lung and prostate.
配列類似性	Belongs to the tumor necrosis factor family.
細胞内局在	Membrane.

画像



Sandwich ELISA - Anti-TRAIL antibody (ab9959)

Please note: All products are "FOR RESEARCH USE ONLY. NOT FOR USE IN DIAGNOSTIC PROCEDURES"

Our Abpromise to you: Quality guaranteed and expert technical support

- Replacement or refund for products not performing as stated on the datasheet
- Valid for 12 months from date of delivery
- Response to your inquiry within 24 hours
- We provide support in Chinese, English, French, German, Japanese and Spanish

- Extensive multi-media technical resources to help you
- We investigate all quality concerns to ensure our products perform to the highest standards

If the product does not perform as described on this datasheet, we will offer a refund or replacement. For full details of the Abpromise, please visit <https://www.abcam.co.jp/abpromise> or contact our technical team.

Terms and conditions

- Guarantee only valid for products bought direct from Abcam or one of our authorized distributors