


Anti-TRA2B/SFRS10 antibody ab31353

★★★★★ [1 Abreviews](#) [25 References](#) [画像数 3](#)

製品の概要

製品名	Anti-TRA2B/SFRS10 antibody
製品の詳細	Rabbit polyclonal to TRA2B/SFRS10
由来種	Rabbit
アプリケーション	適用あり: IHC-P, WB, ICC/IF, CLIP
種交差性	交差種: Mouse, Human 交差が予測される動物種: Rat, Chicken, Cow 
免疫原	Synthetic peptide. This information is proprietary to Abcam and/or its suppliers.
ポジティブ・コントロール	ICC/IF: HeLa
特記事項	<p>The Life Science industry has been in the grips of a reproducibility crisis for a number of years. Abcam is leading the way in addressing this with our range of recombinant monoclonal antibodies and knockout edited cell lines for gold-standard validation. Please check that this product meets your needs before purchasing.</p> <p>If you have any questions, special requirements or concerns, please send us an inquiry and/or contact our Support team ahead of purchase. Recommended alternatives for this product can be found below, along with publications, customer reviews and Q&As</p>

製品の特性

製品の状態	Liquid
保存方法	Shipped at 4°C. Store at +4°C short term (1-2 weeks). Upon delivery aliquot. Store at -20°C or -80°C. Avoid freeze / thaw cycle.
バッファー	<p>pH: 7.40</p> <p>Preservative: 0.02% Sodium azide</p> <p>Constituent: PBS</p> <p>Batches of this product that have a concentration < 1mg/ml may have BSA added as a stabilising agent. If you would like information about the formulation of a specific lot, please contact our scientific support team who will be happy to help.</p>
精製度	Immunogen affinity purified
ポリ/モノ	ポリクローナル
アイソタイプ	IgG

アプリケーション

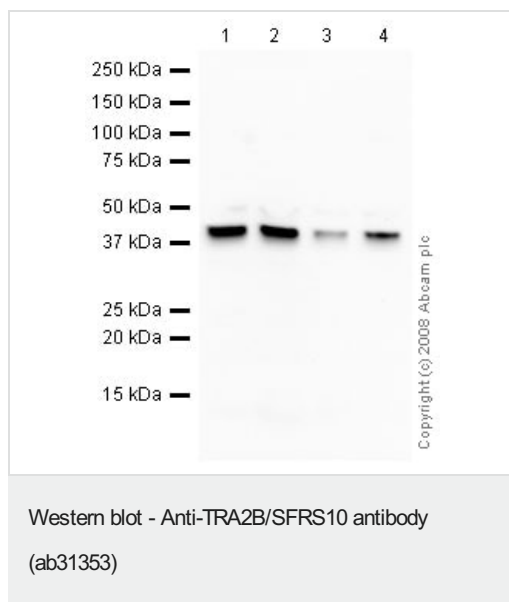
The Abpromise guarantee **Abpromise保証は、次のテスト済みアプリケーションにおけるab31353の使用に適用されます**
アプリケーションノートには、推奨の開始希釈率がありますが、適切な希釈率につきましてはご確認ください。

アプリケーション	Abreviews	特記事項
IHC-P		Use at an assay dependent concentration.
WB	★★★★★ (1)	Use a concentration of 1 µg/ml. Detects a band of approximately 40 kDa (predicted molecular weight: 33 kDa). Although the predicted molecular mass of TRA2B/SFRS10 is ~33 kDa, the available literature describes TRA2B/SFRS10 running at ~40 kDa in SDS-PAGE
ICC/IF		Use a concentration of 1 µg/ml.
CLIP		Use at an assay dependent concentration. PubMed: 22194695

ターゲット情報

機能	Sequence-specific RNA-binding protein which participates in the control of pre-mRNA splicing.
組織特異性	Highest expression in heart, skeletal muscle and pancreas. Less abundant in kidney, placenta and brain. Lowest expression in kidney and liver.
配列類似性	Belongs to the splicing factor SR family. Contains 1 RRM (RNA recognition motif) domain.
翻訳後修飾	Phosphorylated in the RS domains. Dimethylation at Arg-241 is probably asymmetric.
細胞内局在	Nucleus.

画像



All lanes : Anti-TRA2B/SFRS10 antibody (ab31353) at 1 µg/ml

Lane 1 : HeLa (Human epithelial carcinoma cell line) Whole Cell Lysate

Lane 2 : Jurkat (Human T cell lymphoblast-like cell line) Whole Cell Lysate

Lane 3 : A431 (Human epithelial carcinoma cell line) Whole Cell Lysate

Lane 4 : HEK293 (Human embryonic kidney cell line) Whole Cell Lysate

Lysates/proteins at 10 µg per lane.

Secondary

All lanes : Goat polyclonal to Rabbit IgG - H&L - Pre-Adsorbed (HRP) at 1/3000 dilution

Developed using the ECL technique.

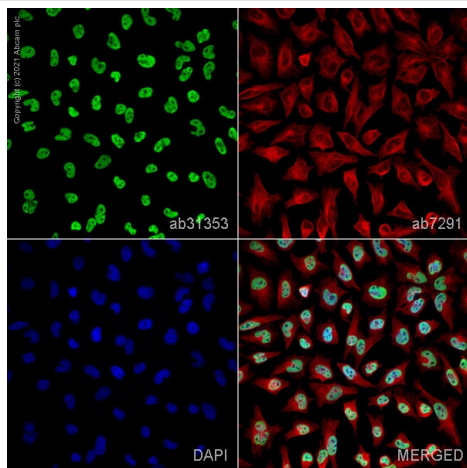
Performed under reducing conditions.

Predicted band size: 33 kDa

Observed band size: 40 kDa

Exposure time: 5 minutes

Although the predicted molecular mass of TRA2B/SFRS10 is ~33 kDa, the available literature describes TRA2B/SFRS10 running at ~40 kDa in SDS-PAGE.

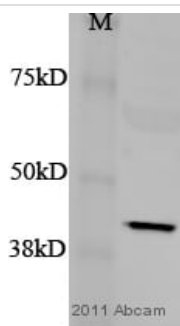


Immunocytochemistry/ Immunofluorescence - Anti-TRA2B/SFRS10 antibody (ab31353)

ab31353 staining TRA2B in HeLa cells. The cells were fixed with 4% paraformaldehyde (10 min), permeabilized with 0.1% PBS-Triton X-100 for 5 minutes and then blocked with 1% BSA/10% normal goat serum/0.3M glycine in 0.1%PBS-Tween for 1h. The cells were then incubated overnight at 4°C with ab31353 at 1µg/ml and **ab7291**, Mouse monoclonal [DM1A] to alpha Tubulin - Loading Control. Cells were then incubated with **ab150081**, Goat polyclonal Secondary Antibody to Rabbit IgG - H&L (Alexa Fluor® 488), pre-adsorbed at 1/1000 dilution (shown in green) and **ab150120**, Goat polyclonal Secondary Antibody to Mouse IgG - H&L (Alexa Fluor® 594), pre-adsorbed at 1/1000 dilution (shown in pseudocolour red). Nuclear DNA was labelled with DAPI (shown in blue).

Also suitable in cells fixed with 100% methanol (5 min).

Image was acquired with a high-content analyser (Operetta CLS, Perkin Elmer) and a maximum intensity projection of confocal sections is shown.



Western blot - Anti-TRA2B/SFRS10 antibody (ab31353)

This image is courtesy of an anonymous Abreview.

Anti-TRA2B/SFRS10 antibody (ab31353) at 1/100 dilution + NSC34 mouse cell lysate at 20 µg

Secondary

IRDYE® 800CW Donkey anti-Rabbit IgG at 1/3000 dilution

Developed using the ECL technique.

Performed under reducing conditions.

Predicted band size: 33 kDa

Observed band size: 42 kDa

Exposure time: 1 minute

Please note: All products are "FOR RESEARCH USE ONLY. NOT FOR USE IN DIAGNOSTIC PROCEDURES"

Our Abpromise to you: Quality guaranteed and expert technical support

- Replacement or refund for products not performing as stated on the datasheet
- Valid for 12 months from date of delivery
- Response to your inquiry within 24 hours
- We provide support in Chinese, English, French, German, Japanese and Spanish
- Extensive multi-media technical resources to help you

- We investigate all quality concerns to ensure our products perform to the highest standards

If the product does not perform as described on this datasheet, we will offer a refund or replacement. For full details of the Abpromise, please visit <https://www.abcam.co.jp/abpromise> or contact our technical team.

Terms and conditions

- Guarantee only valid for products bought direct from Abcam or one of our authorized distributors